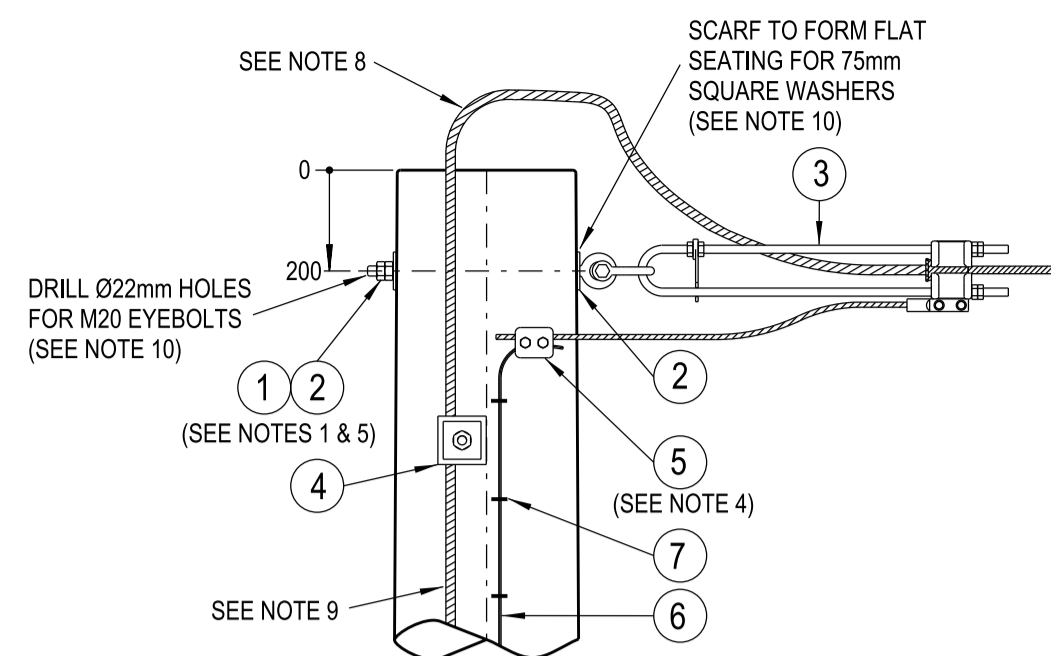
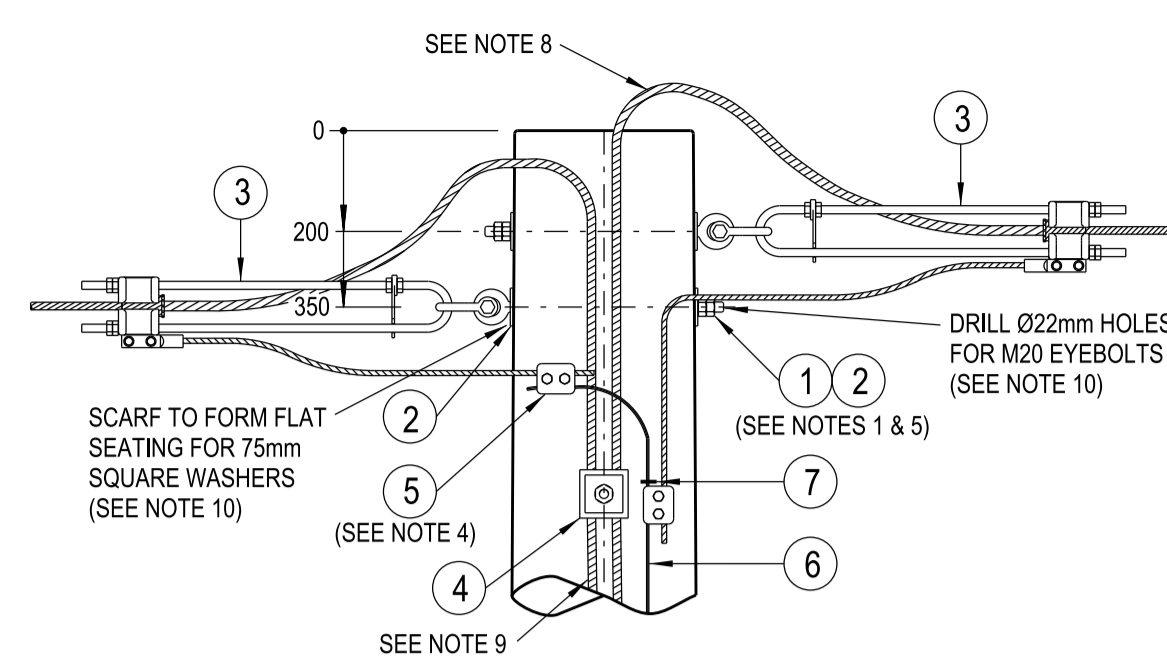


'A' THROUGH TERMINATION



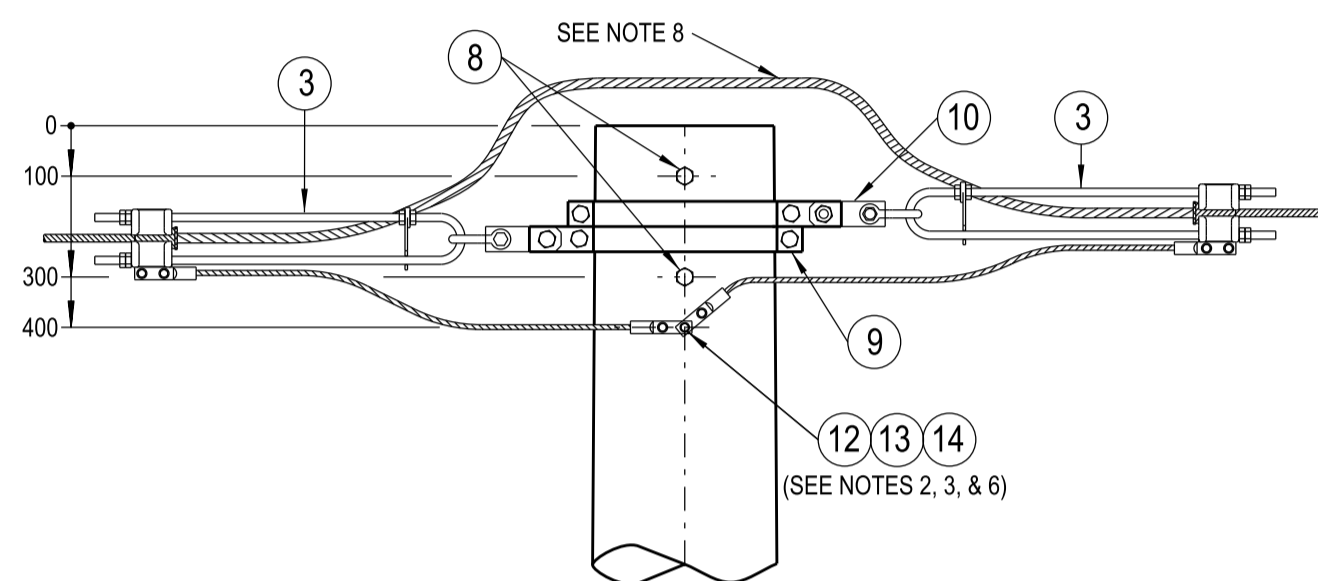
'B' SINGLE ENDED SPLICE BOX TERMINATION



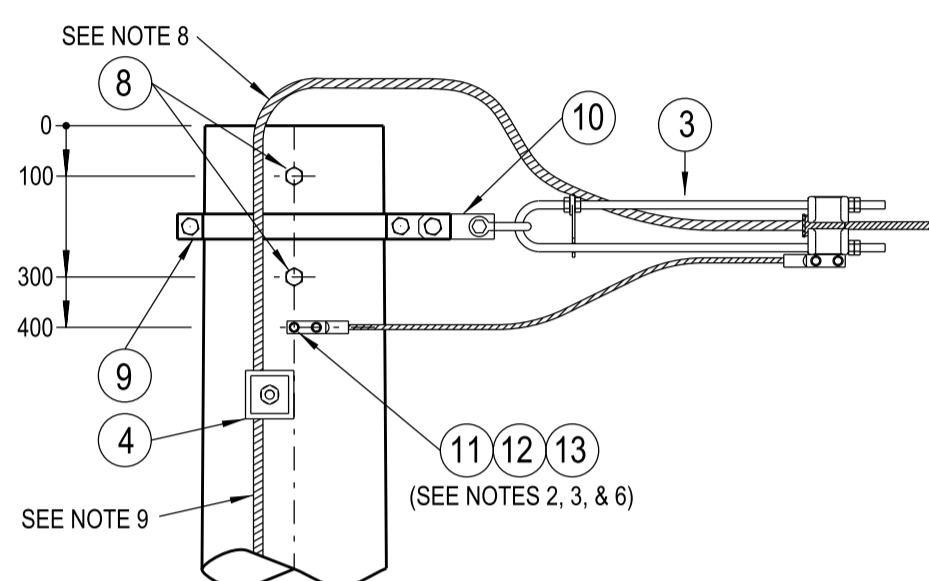
'C' THROUGH SPLICE BOX TERMINATION

ARRANGEMENT 1 (TIMBER POLE)

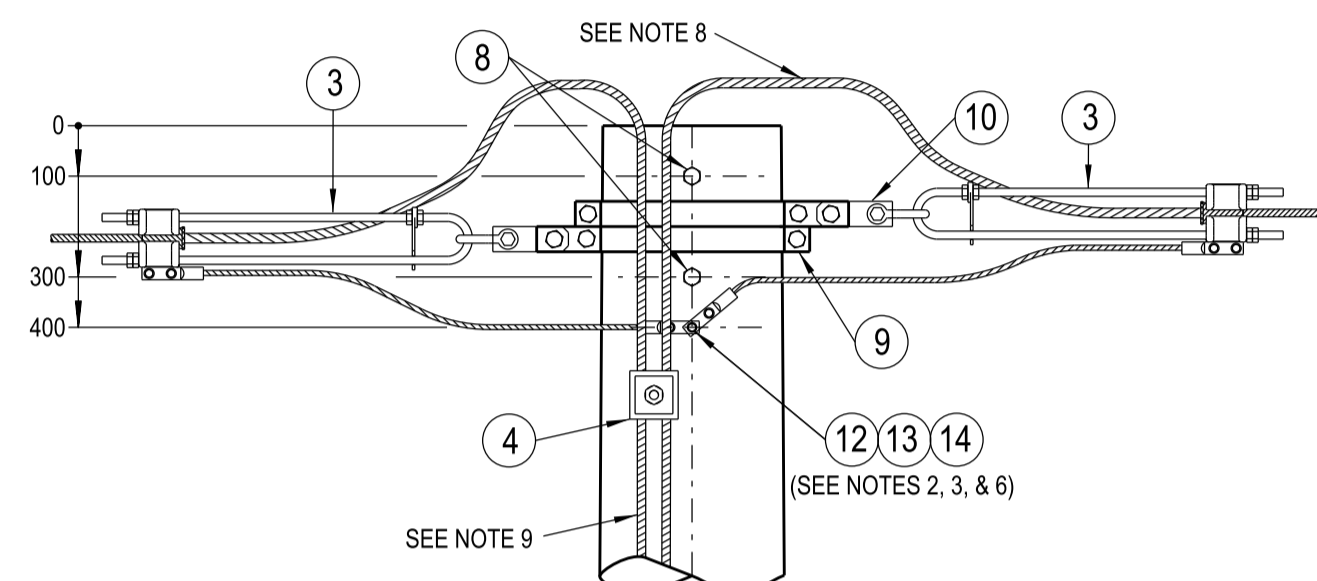
WITH EYEBOLTS



'A' THROUGH TERMINATION



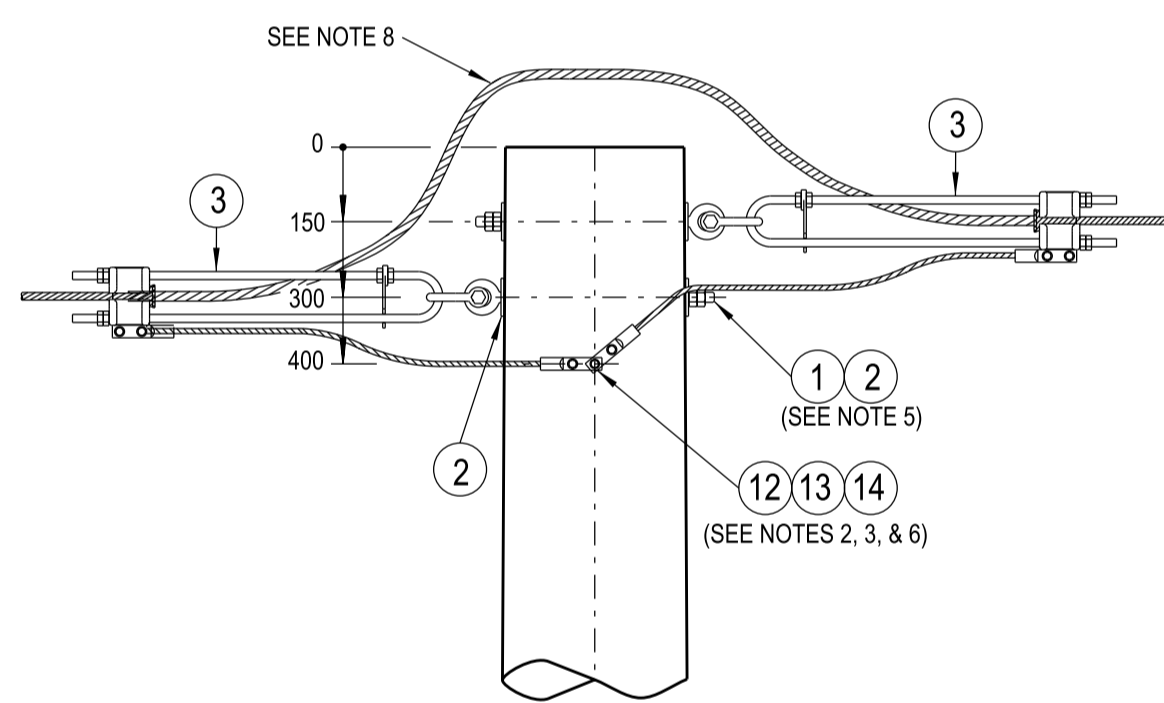
'B' SINGLE ENDED SPLICE BOX TERMINATION



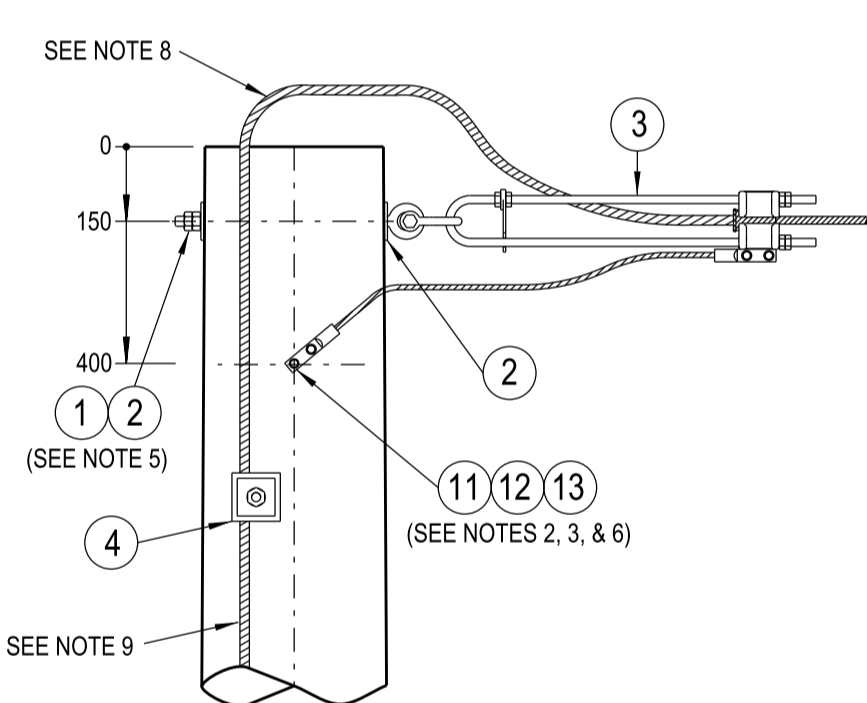
'C' THROUGH SPLICE BOX TERMINATION

ARRANGEMENT 2 (CONCRETE/STEEL POLE)

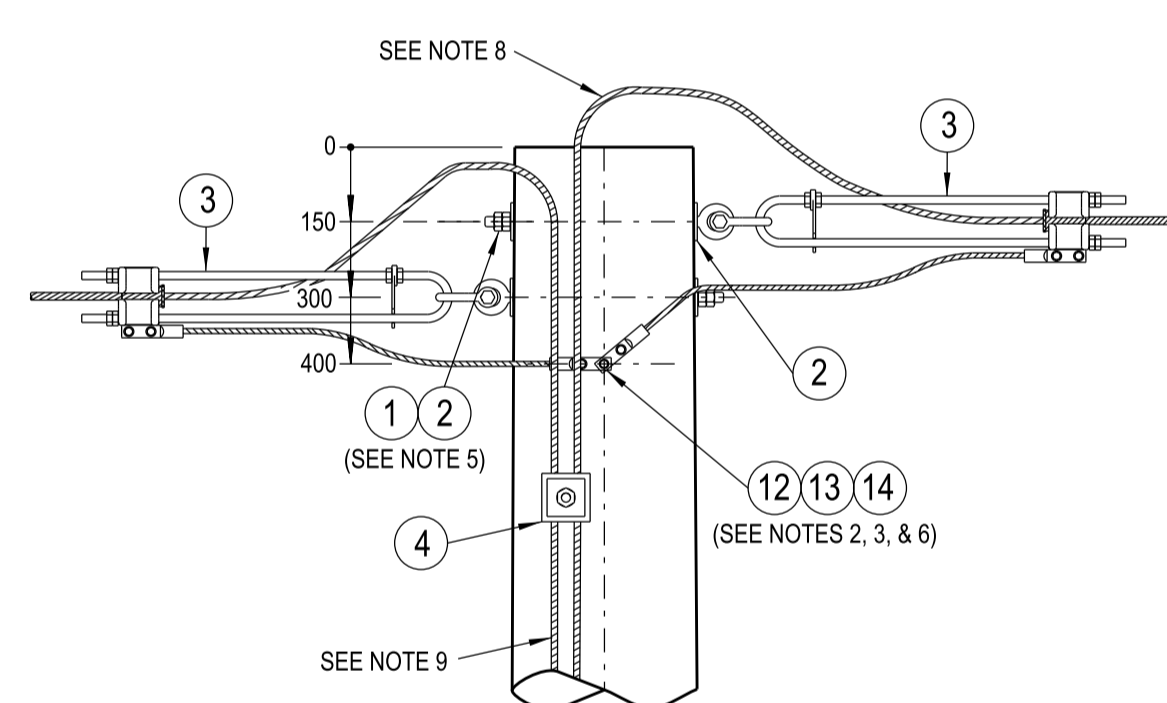
WITH POLE BANDS



'A' THROUGH TERMINATION



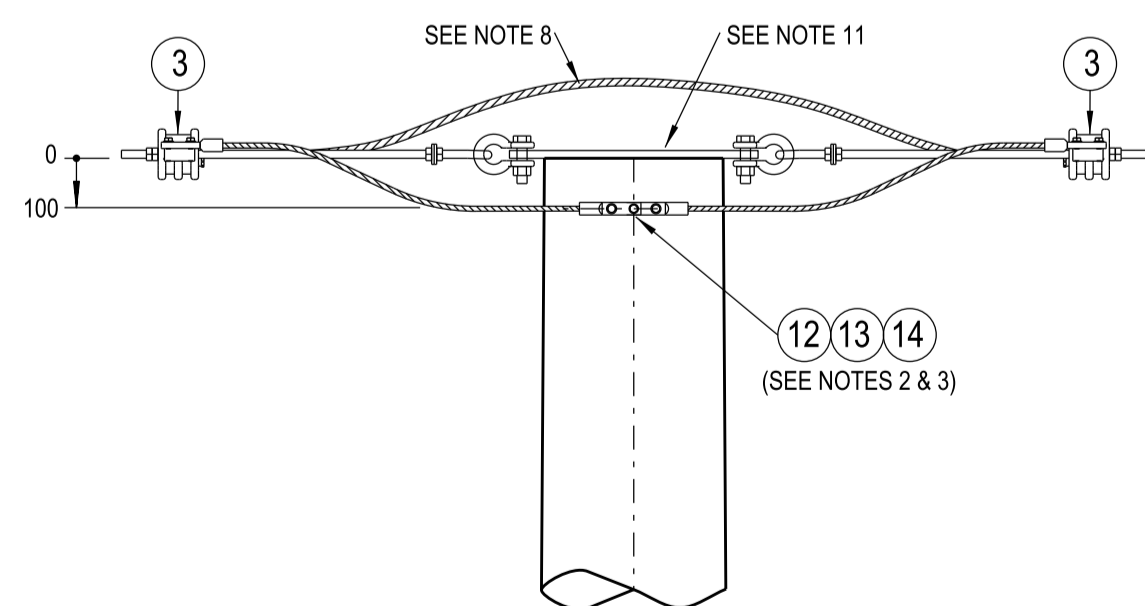
'B' SINGLE ENDED SPLICE BOX TERMINATION



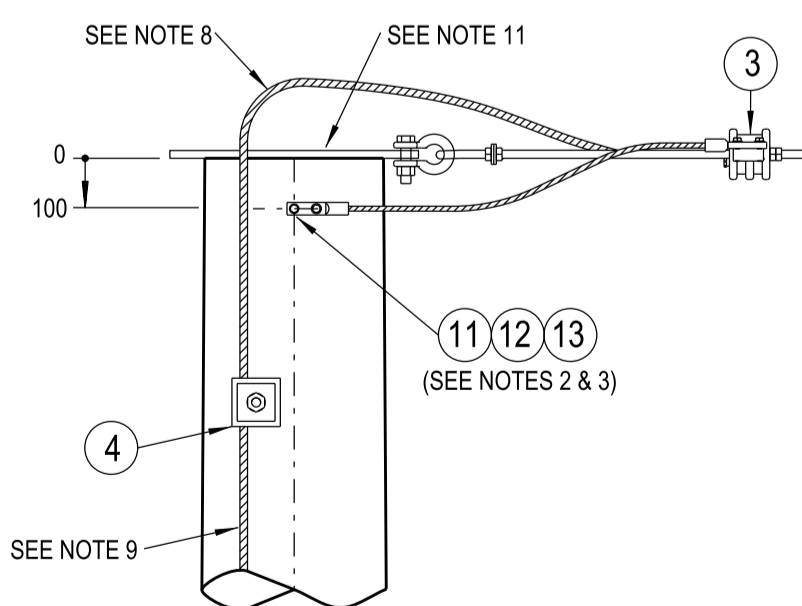
'C' THROUGH SPLICE BOX TERMINATION

ARRANGEMENT 3 (CONCRETE/STEEL POLE)

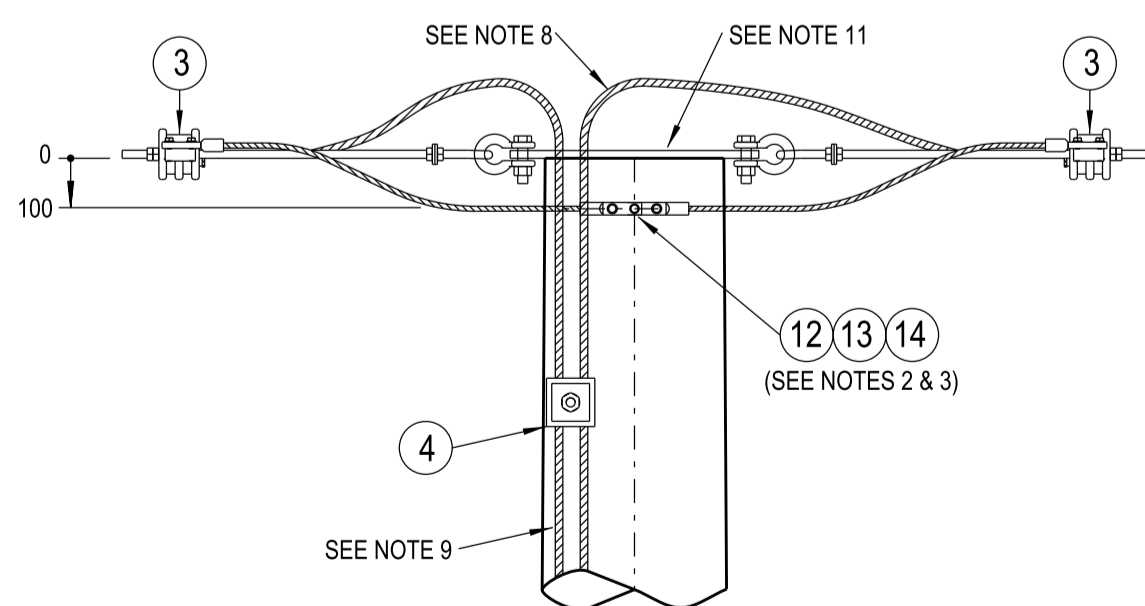
WITH EYEBOLTS



'A' THROUGH TERMINATION



'B' SINGLE ENDED SPLICE BOX TERMINATION



'C' THROUGH SPLICE BOX TERMINATION

ARRANGEMENT 4 (STEEL POLE)

WITH INTEGRATED POLE BANDS

NOTES:

1. ALL EYEBOLTS PASSING THROUGH TIMBER ARE TO BE COATED WITH GRAPHITE GREASE.
2. USE AN M12 x 25mm SET SCREW WHEN ATTACHING A SINGLE BONDING CONDUCTOR TO THE POLE EARTH LOCATION. USE AN M12 x 40mm SET SCREW WHEN ATTACHING MULTIPLE BONDING CONDUCTORS TO THE SAME POLE EARTH LOCATION.
3. THE OPGW CONDUCTOR IS TO BE BONDED TO AN M12 STAINLESS STEEL EARTH FERRULE ON A CONCRETE POLE. THE OPGW CONDUCTOR IS TO BE BONDED TO AN M12 THREADED HOLE ON A STEEL POLE.
4. BI-METALLIC PARALLEL GROOVE CLAMP TO BE INSTALLED WITH COPPER CONDUCTOR BELOW ALUMINIUM CONDUCTOR SO THAT COPPER SALTS DO NOT WASH ONTO ALUMINIUM CONDUCTOR.
5. THE LOAD AND DEVIATION ALLOWABLE ON THE EYEBOLTS IS TO BE DETERMINED FROM DRG : 520324.
6. EARTH BONDING LUG TO BE IN DIRECT CONTACT WITH CONCRETE POLE EARTH FERRULE. NO SPACING WASHERS PERMITTED.
7. FIBERLIGN PARTS ARE AVAILABLE FROM PREFORMED LINE PRODUCTS (AUSTRALIA) PTY LTD.
8. OPGW CONDUCTOR ACCESSORIES TO BE ORDERED TO SUIT SIZE AND LAY OF CONDUCTOR STRANDS.
9. WHEN USING AN OPGW TERMINATION ARRANGEMENT THAT BREAKS THE OPGW CONDUCTOR, REFER TO DRAWING 565743 FOR SPLICE BOX AND COILED CABLE BRACKET MOUNTING DETAILS.
10. TIMBER POLES SHALL BE DRILLED, SCARFED AND DRESSED ON SITE, DRILLING AND SCARFING TO BE TREATED WITH APPROVED PRESERVATIVES.
11. INTEGRATED POLE BANDS CAN BE USED AS AN ALTERNATIVE TO 3 BOLT POLE BANDS ON STEEL POLES.

ITEM	DESCRIPTION	DRG.No	STOCK CODE	QTY																
				ARR-1			ARR-2			ARR-3			ARR-4							
14	SCREW - SET, M12 x 40mm, STAINLESS STEEL	515467	45146					1		1		1		1		1		1		1
13	WASHER - FLAT, M12, STAINLESS STEEL	518081	49429					1	1	1	1	1	1	1	1	1	1	1	1	1
12	WASHER - SPRING, M12, STAINLESS STEEL	518082	143859					1	1	1	1	1	1	1	1	1	1	1	1	1
11	SCREW - SET, M12x25mm, STAINLESS STEEL	515467	44693					1												1
10	PLATE - LINK, MARK 3, GALVANISED	22268	181891					2	1	2										1
9	BAND - POLE, 3 BOLT (TO SUIT POLE SIZE)	507741						2	1	2										
8	BOLT & NUT - M20, GALVANISED (LENGTH TO SUIT POLE)	515466						2	2	2										
7	STAPLE - 3.15 x 25mm, GALVANISED	175601	A/R	A/R	A/R															
6	CONDUCTOR - 19/2.14 (70mm ²) COPPER, HARD DRAWN, PVC COVERED	60111	A/R	A/R	A/R															
5	CLAMP - PARALLEL GROOVE, BI-METALLIC (SEE NOTE 4)	H88013	2	1	2															
4	CLAMP - DOWNLEAD CUSHION, FIBERLIGN (TO SUIT CONCRETE/STEEL POLE) (SEE NOTE 7)										A/R	A/R								A/R
4	CLAMP - DOWNLEAD CUSHION, FIBERLIGN (TO SUIT TIMBER POLE) (SEE NOTE 7)										A/R	A/R								A/R
3	DEADEND - TERMINATION ASSEMBLY, FIBERLIGN (SEE NOTE 7)			2	1	2	2	1	2	2	1	2	2	1	2	2	1	2	1	2
2	WASHER - SQUARE, 75x75x6mm, GALVANISED (Ø22mm HOLE)	518081	H39231	4	2	4								4	2	4				
1	EYEBOLT - M20, GALVANISED (LENGTH TO SUIT POLE) (SEE NOTE 5)	513653		2	1	2								2	1	2				

CAD DRAWING
DO NOT MANUALLY AMEND
AMENDMENTS
DWN: PATRICIA RIOS
CHKD: GLENN FORD
DATE: 01/06/2012
DRAWING BORDER UPDATED.
OPGW ARRANGEMENTS
ADDED. MATERIAL LIST &
NOTES AMENDED.

APPD by: GLENN FORD
DWN: PATRICIA RIOS
CHKD: PHILIP JONES
DATE: 01/06/2016
ARRANGEMENT C ADDED.
MATERIAL LIST AMENDED.
DRAWING CHANGED TO
A1 SHEET

APPD by: DOMINIC SHIELDS

DIMENSIONS ARE IN MILLIMETRES UNLESS STATED OTHERWISE. DO NOT SCALE

ASSOCIATED DRAWINGS

20mm EYEBOLT LOADING AND DEVIATION GRAPH	520324
OPGW CONDUCTOR SPLICE BOX & COILED CABLE BRACKET MTG	565743

NETWORK STANDARD
Ausgrid
145 NEWCASTLE RD
WALLSEND NSW 22287
PHONE: 02 4951 9388
FAX: 02 4951 9389

DESIGNED	--
DRAWN	P.S
CHECKED	G.S
AUTHORISED	G.SKINNER
DATE	02/07/99
SCALE	1:15
MAP REF.	--
LGA	--

**STANDARD CONSTRUCTION
OPGW CONDUCTOR
TERMINATION
MOUNTING ARRANGEMENT**

PROJECT No. STD
PROJTRAK No. --

SIZE A1
DRAWING No. 565747
SHEETS 01 of 01
AMD 4