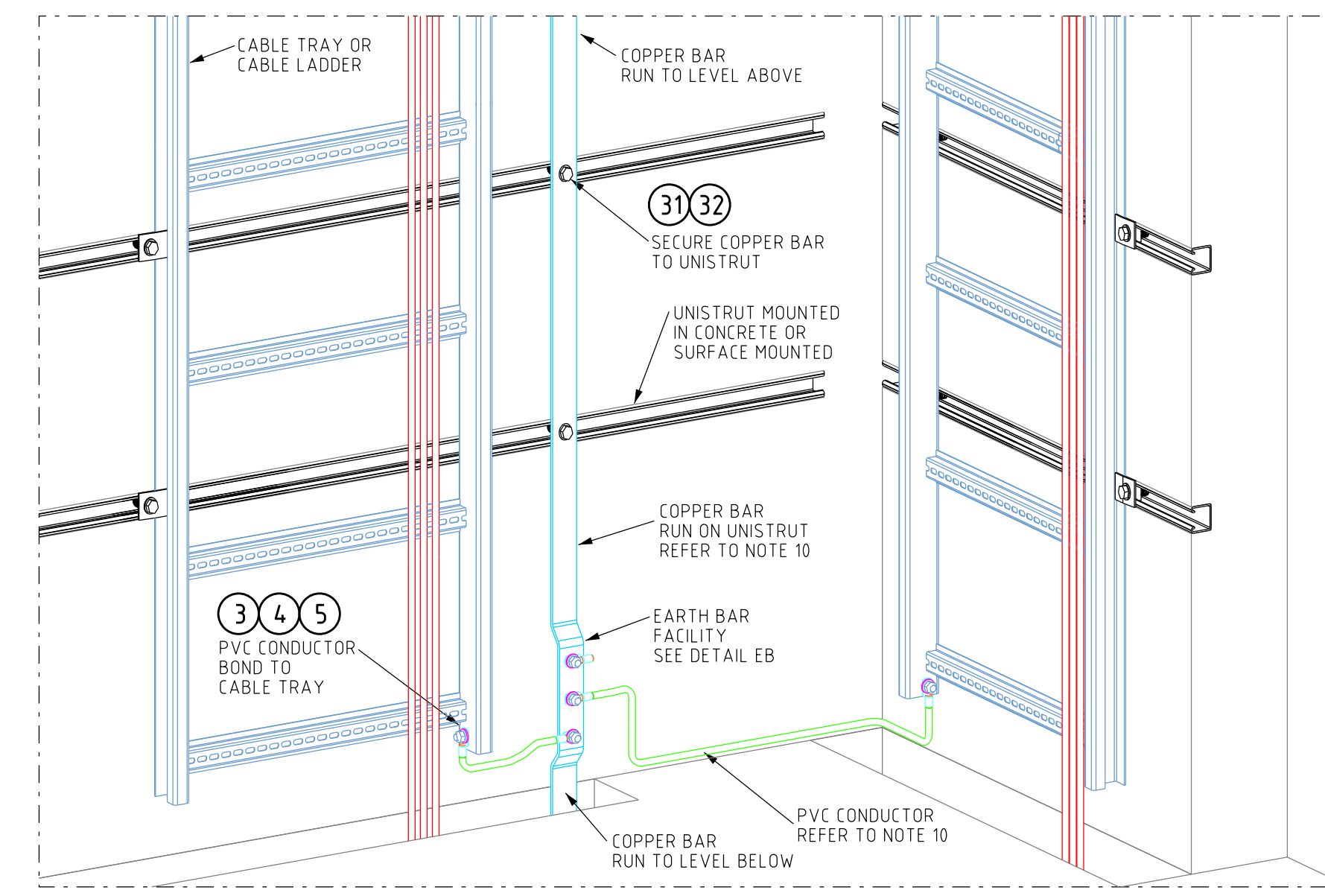
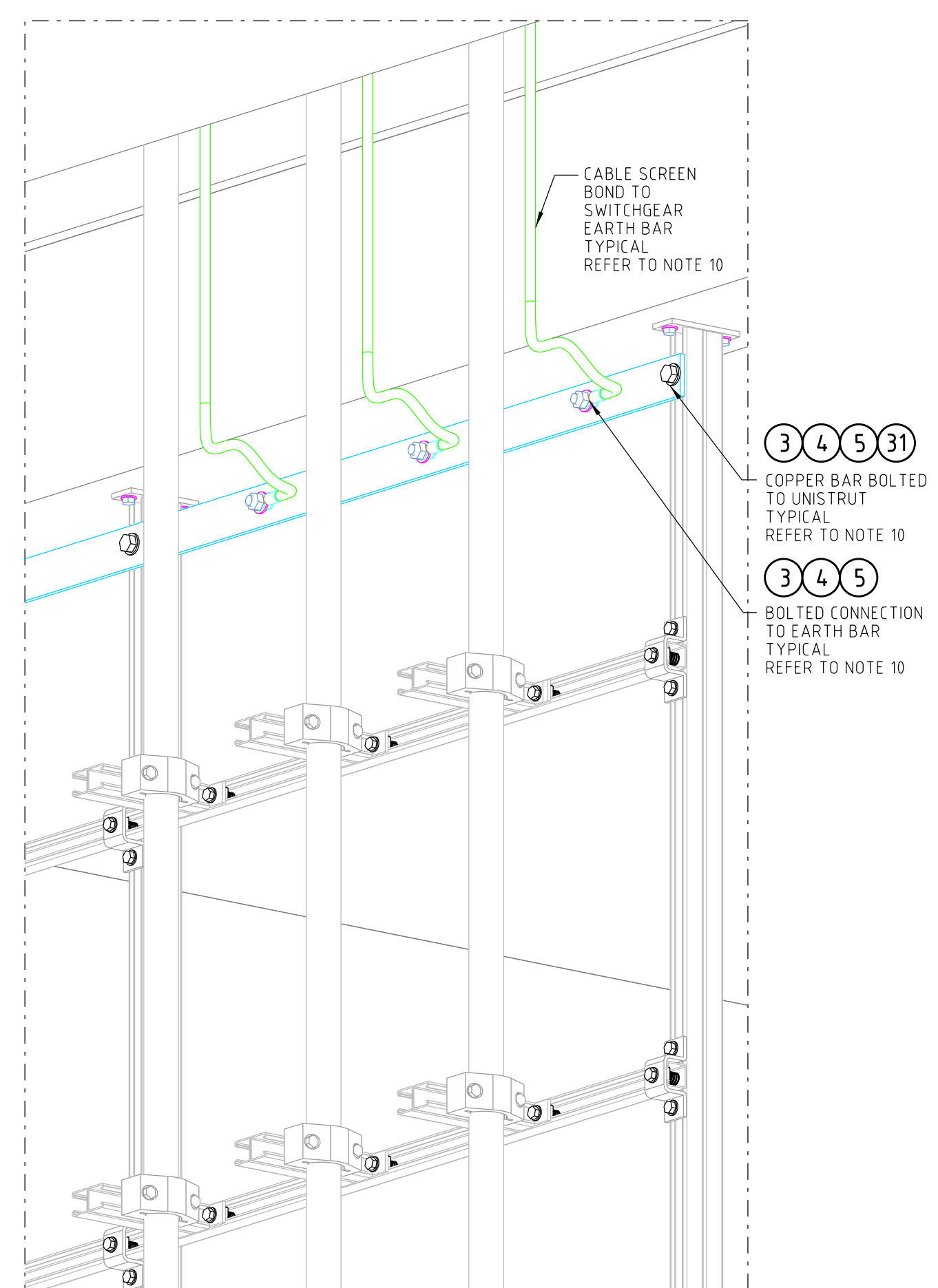


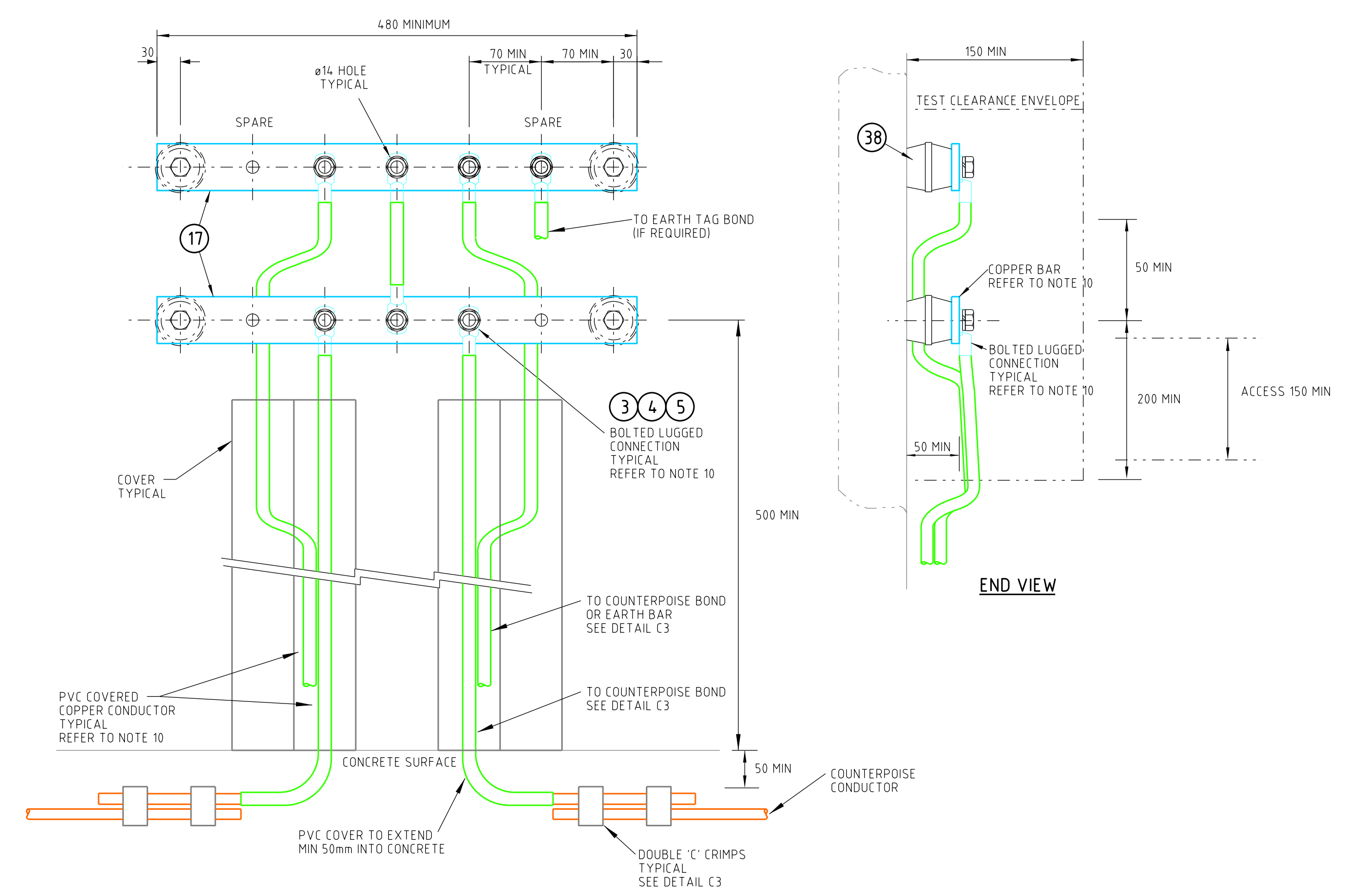
TYPICAL CONTROL PANEL EARTH BAR BOND TO CABLE TRAY SUPPORT STRUCTURE (CHANNEL PENDANT) DETAIL (PB)



COPPER BAR RUN ON UNISTRUT IN CABLE RISER WITH BONDS TO CABLE TRAYS DETAIL (CR)



TYPICAL CABLE SCREEN BOND TO SWITCHGEAR EARTH BAR DETAIL (CSB)



TYPICAL EARTH BAR DETAIL - ELEVATION DETAIL (EB)

- NOTES:**
- FOR EARTH BARS SUPPLIED WITH EQUIPMENT - DRILL EXISTING EARTH BAR TO SUIT EARTH BOND CONNECTIONS
  - FOR AUSGRID SUPPLIED EARTH BARS - ALLOWANCE FOR A MINIMUM OF 2 SPARE CONNECTIONS IS REQUIRED
  - A MAXIMUM OF 1000mm (12 CONNECTIONS) IS ALLOWED BETWEEN SUPPORT BRACKETS
  - THE DESTINATION OF ALL EARTH BONDS ARE TO BE CLEARLY MARKED AS PER EARTH BAR DETAILS TABLE ON PERMANENT LABELS AT BOTH ENDS OF THE BOND REFER TO DETAIL LC
  - ALL EARTH BARS TO BE CLEARLY & PERMANENTLY LABELLED AS PER EARTH BAR DETAILS TABLE SEE DRAWING 236804 DETAIL NP
  - CABLES ARE REQUIRED TO BE SECURED TO CONCRETE USING STAINLESS STEEL SADDLES, ANCHOR AND SEALANT SEE DETAIL FC
  - COPPER BAR AND COPPER STRAP TO BE SECURED TO CONCRETE WITH ANCHOR AND SEALANT SEE DETAIL FB & FS
  - WHERE DIMENSION IS LABELLED xx THE DIMENSION IS THE THICKNESS OF THE SELECTED COPPER BAR PLUS 10mm
  - THIS DRAWING TO BE READ IN CONJUNCTION WITH DRAWING 236806 SHEET 1
  - FOR CONDUCTOR, CRIMP & LUG SIZES REFER TO SITE SPECIFIC EARTHING DESIGN DOCUMENT
  - PRIOR TO MAKING CONNECTIONS CLEAN SURFACES AND APPLY CONDUCTIVE GREASE. BOLT ALL CONNECTIONS AND JOINTS WITH STAINLESS STEEL NUTS, BOLTS, FLAT WASHERS AND BELLEVILLE WASHERS. TEST TO CONFIRM CONTINUITY

**NETWORK STANDARD**

ITEM NO.	ITEM	DESCRIPTION	SAP CODE	MANUFACTURER	STD ORDER QTY.
43	FASTENERS WASHER	FASTENERS - WASHER - M10 BELLEVILLE STAINLESS STEEL GRADE 304	177296	JAMES GLEN 02750158	100 PL.
42	FASTENERS WASHER	FASTENERS - WASHER - M10 FLAT STAINLESS STEEL GRADE 316	49411	JAMES GLEN 03756102	100 PL.
41	FASTENERS BOLT & NUT	FASTENERS - BOLT & NUT - M10 HEX STAINLESS STEEL GRADE 316 - LENGTH TO SUIT	VARIOUS	VARIOUS	N/A
38	STANDOFF INSULATOR	LOW VOLTAGE INSULATOR H50 x Ø50mm M12 INTERNAL THREAD		NM 50-12	
32	UNISTRUT SET SCREW	UNISTRUT - SET SCREW - M12 x 30mm HOT DIPPED GALV		HHS 1230	
31	UNISTRUT SPRING NUT	UNISTRUT - SPRING NUT - M12 HOT DIPPED GALV		P1010	
5	FASTENERS WASHER	FASTENERS - WASHER - M12 BELLEVILLE STAINLESS STEEL GRADE 304	175903	JAMES GLEN 3543	100 PL.
4	FASTENERS WASHER	FASTENERS - WASHER - M12 FLAT STAINLESS STEEL GRADE 316	49429	JAMES GLEN 4620	100 PL.
3	FASTENERS BOLT & NUT	FASTENERS - BOLT & NUT - M12 HEX STAINLESS STEEL GRADE 316	VARIOUS	VARIOUS	N/A
2	LUG COMPRESSION	LUG - Ø70mm M12 TINED COPPER HEX COMPRESSION	74831	UTLUX H142325	25 PK.

**MATERIALS LIST**

**Ausgrid**

145 NEWCASTLE RD WALLSEND, NSW 2287  
Ph 02 4951 9388  
Fax 02 4951 9389

SCALE: NTS  
DESIGNED: AARON BULBERT  
DRAWN: AARON BULBERT  
CHECKED: WIN GERRITSEN  
APPROVED: MICHAEL GRIFFITHS  
DATE: 26/11/14

PROJECT NUMBER: E&I NS  
PROJTRAK NUMBER:

EARTHING & INSULATION COORDINATION  
STANDARD CONSTRUCTION  
ELECTRICAL EARTHING  
EARTH BAR MOUNTING & CONNECTION DETAILS

SHEET: 02  
DRAWING No: 236806  
AHD: 0

CAD DRAWING  
DO NOT MANUALLY AMEND  
A. R. E. N. D. R. E. N. T. S.