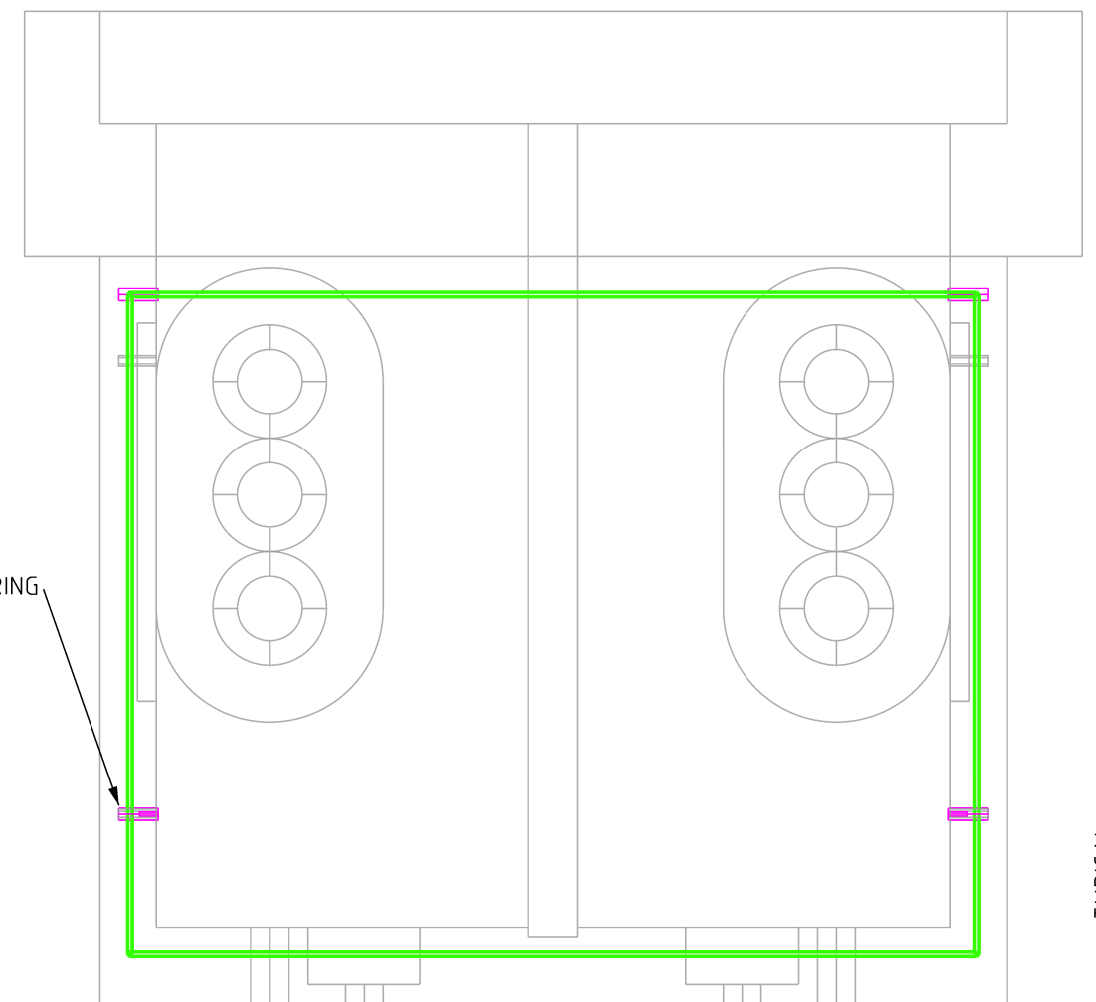
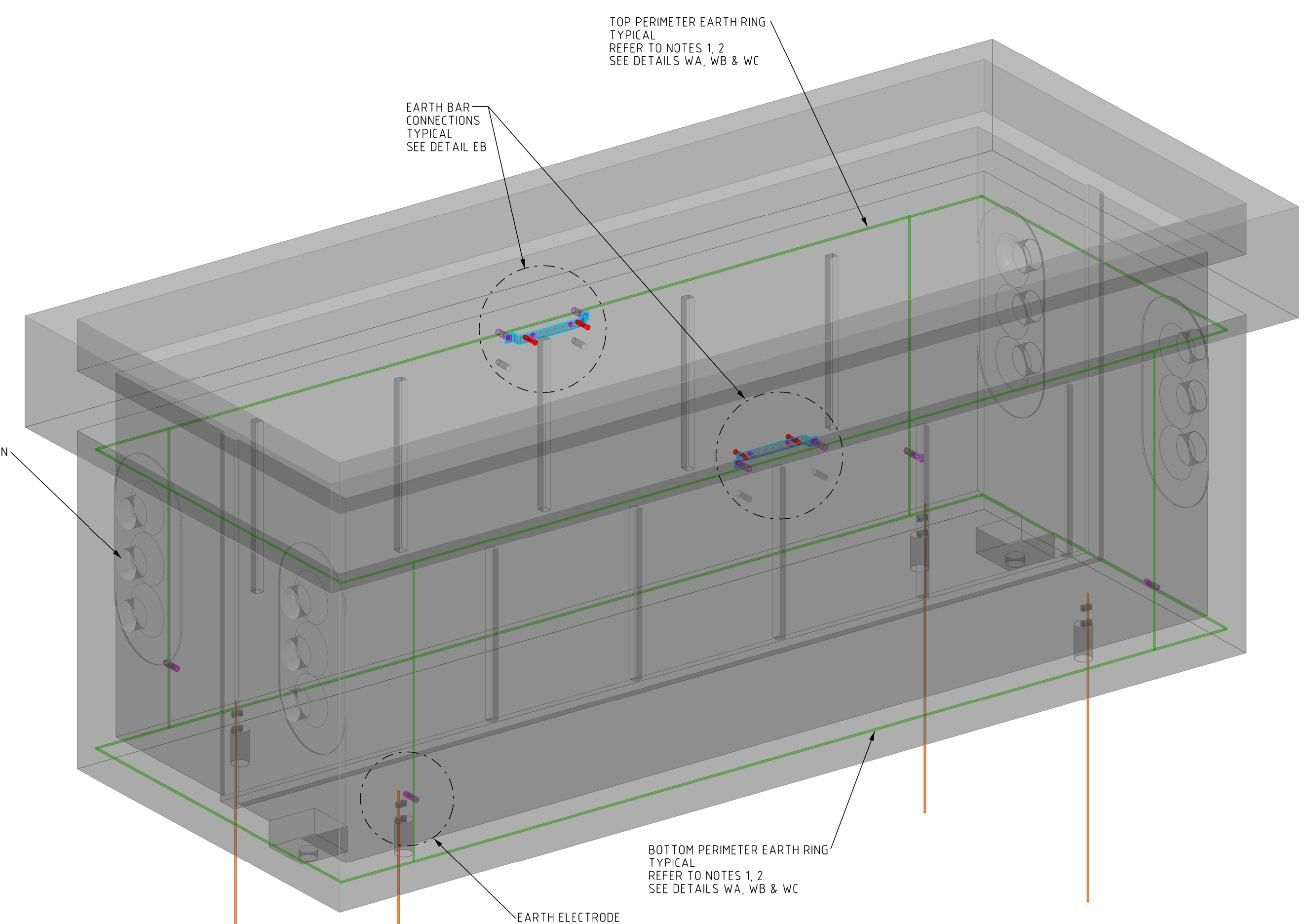


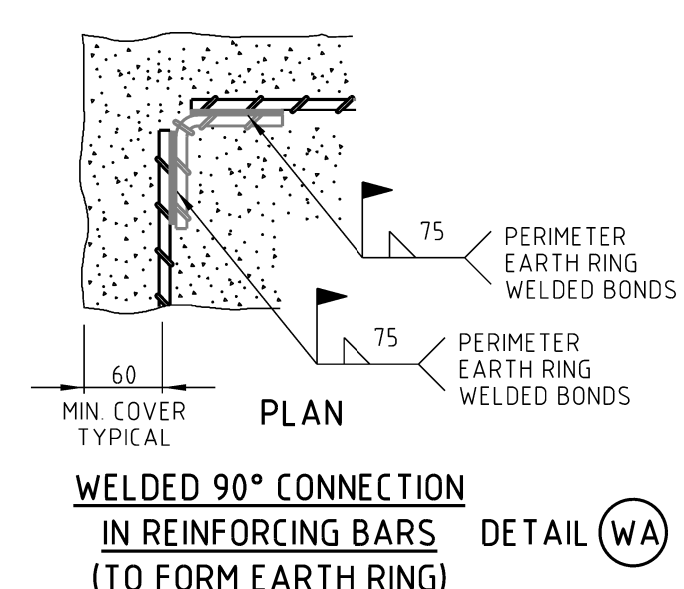
JOINT BAY - EMBEDDED EARTHING DETAIL - SIDE VIEW



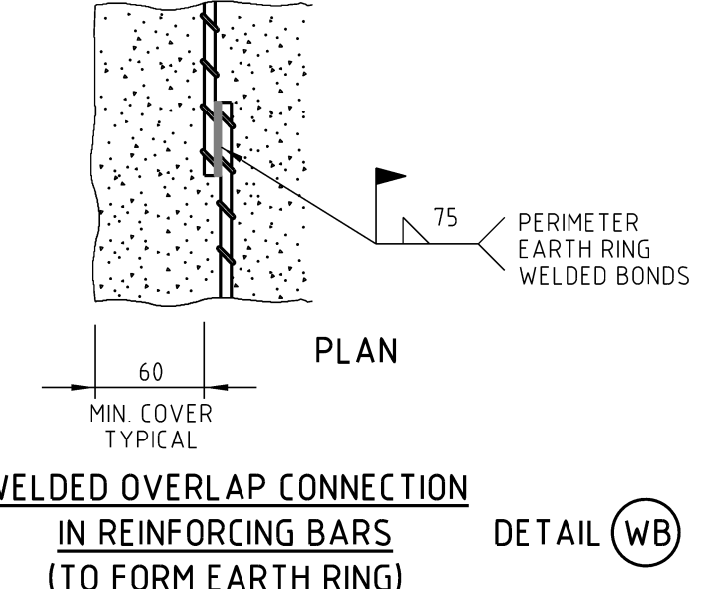
JOINT BAY - EMBEDDED EARTHING DETAIL - FRONT VIEW



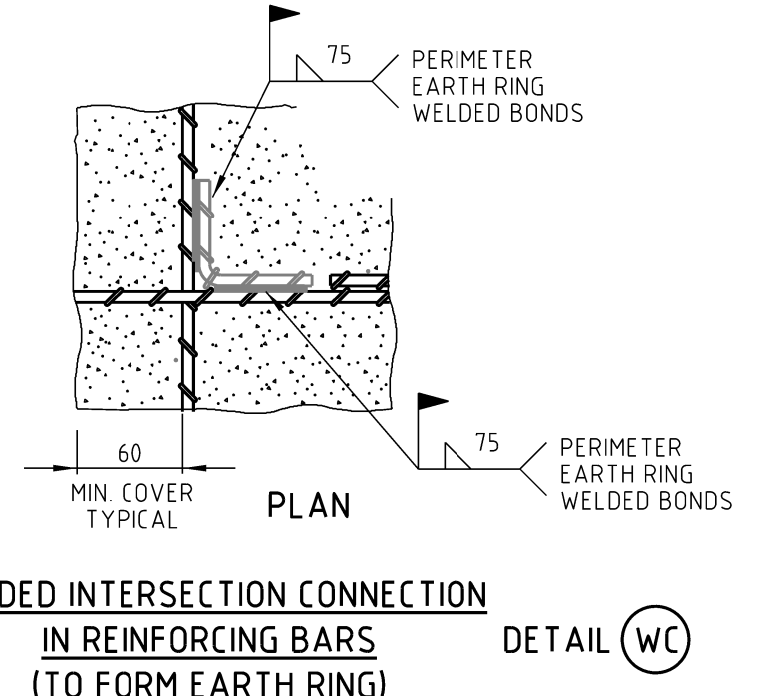
JOINT BAY - EARTHING DETAIL - OVERVIEW



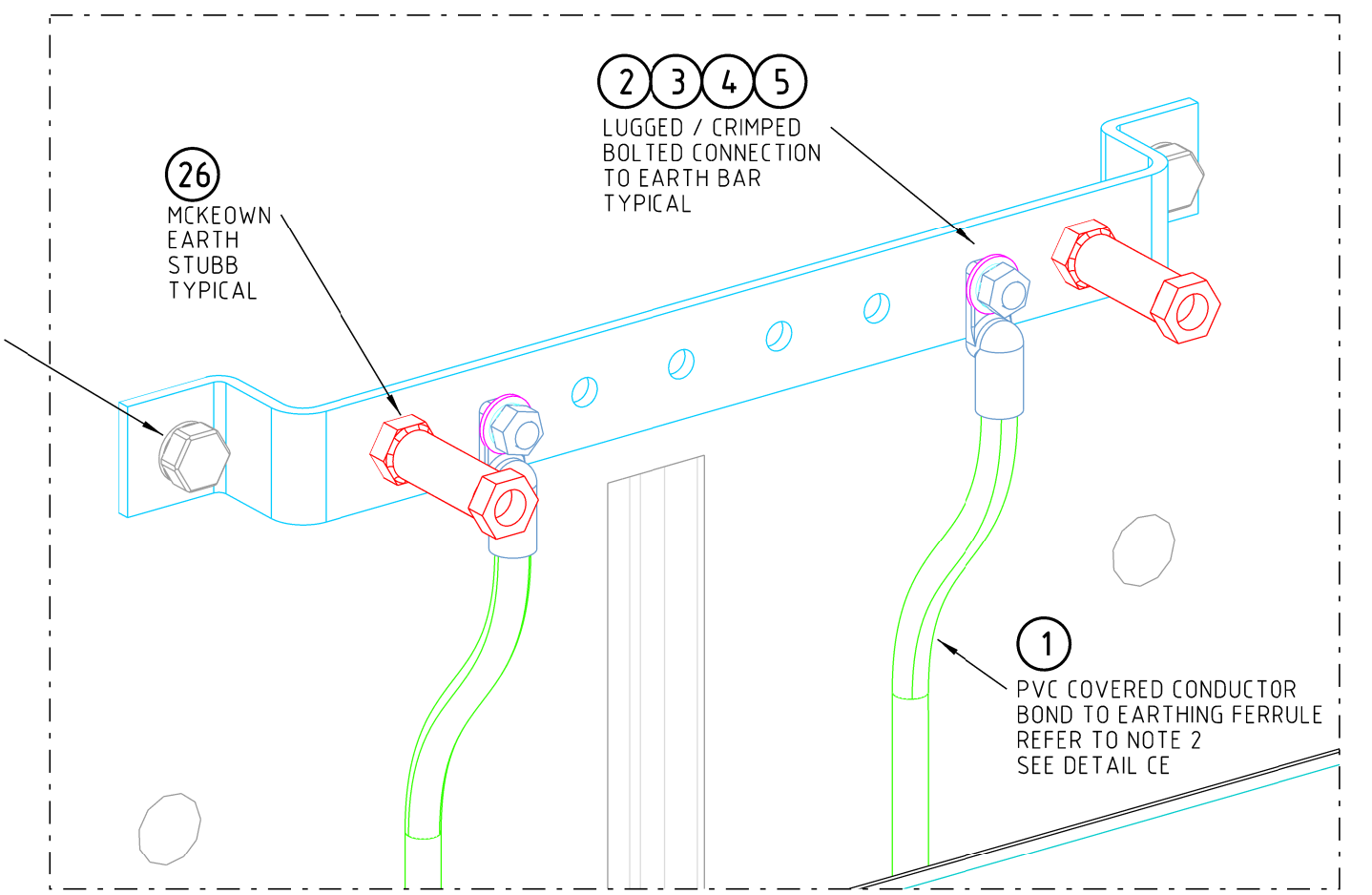
WELDED 90° CONNECTION IN REINFORCING BARS (TO FORM EARTH RING) DETAIL (WA)



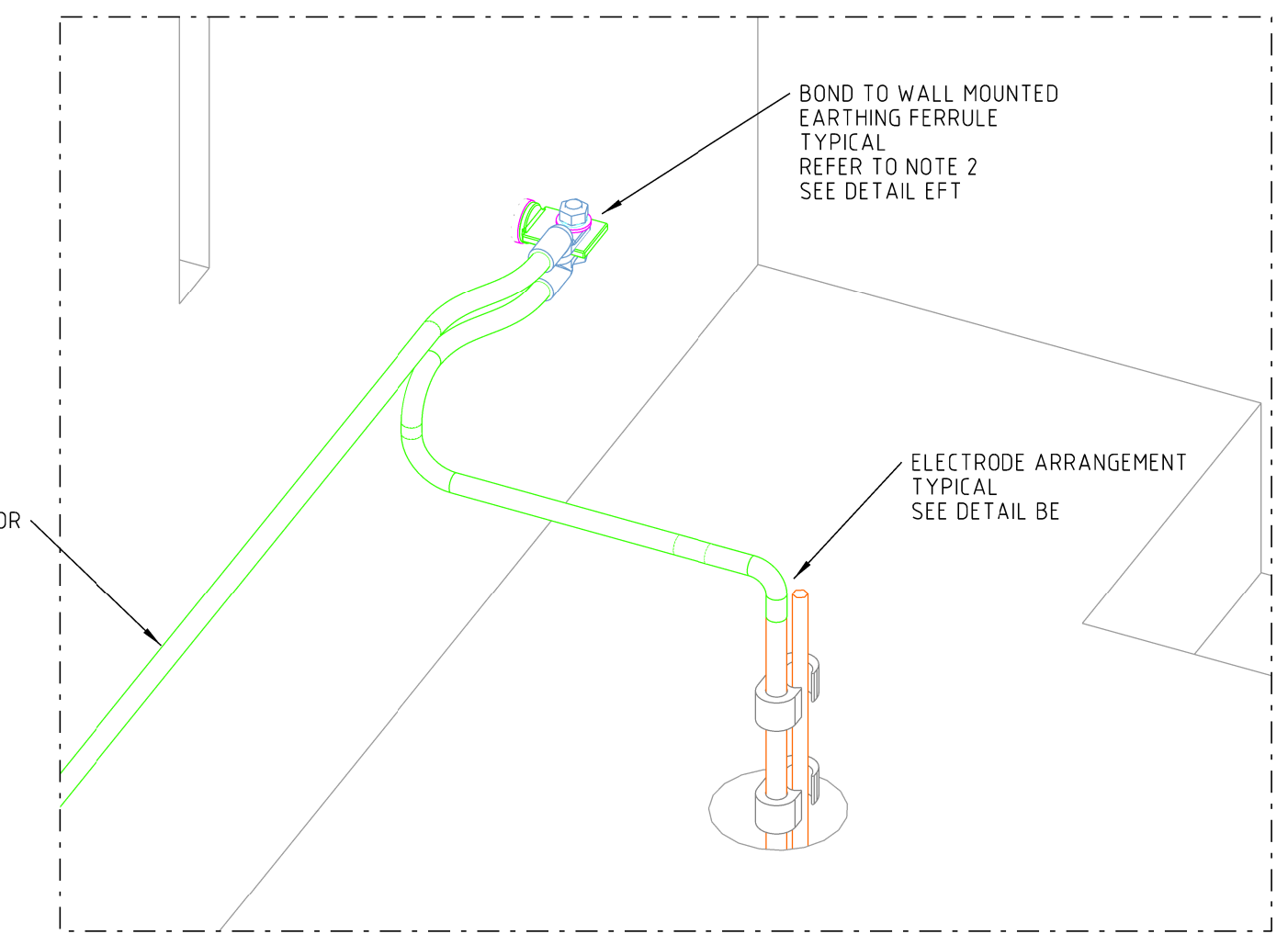
WELDED OVERLAP CONNECTION IN REINFORCING BARS (TO FORM EARTH RING) DETAIL (WB)



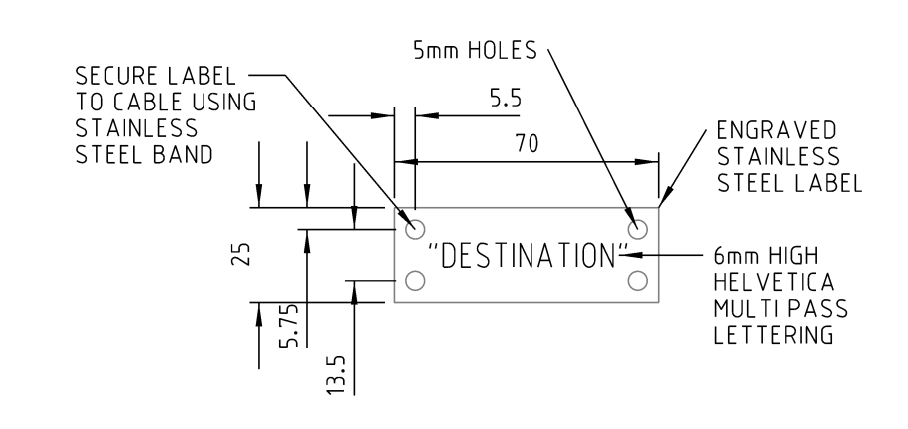
WELDED INTERSECTION CONNECTION IN REINFORCING BARS (TO FORM EARTH RING) DETAIL (WC)



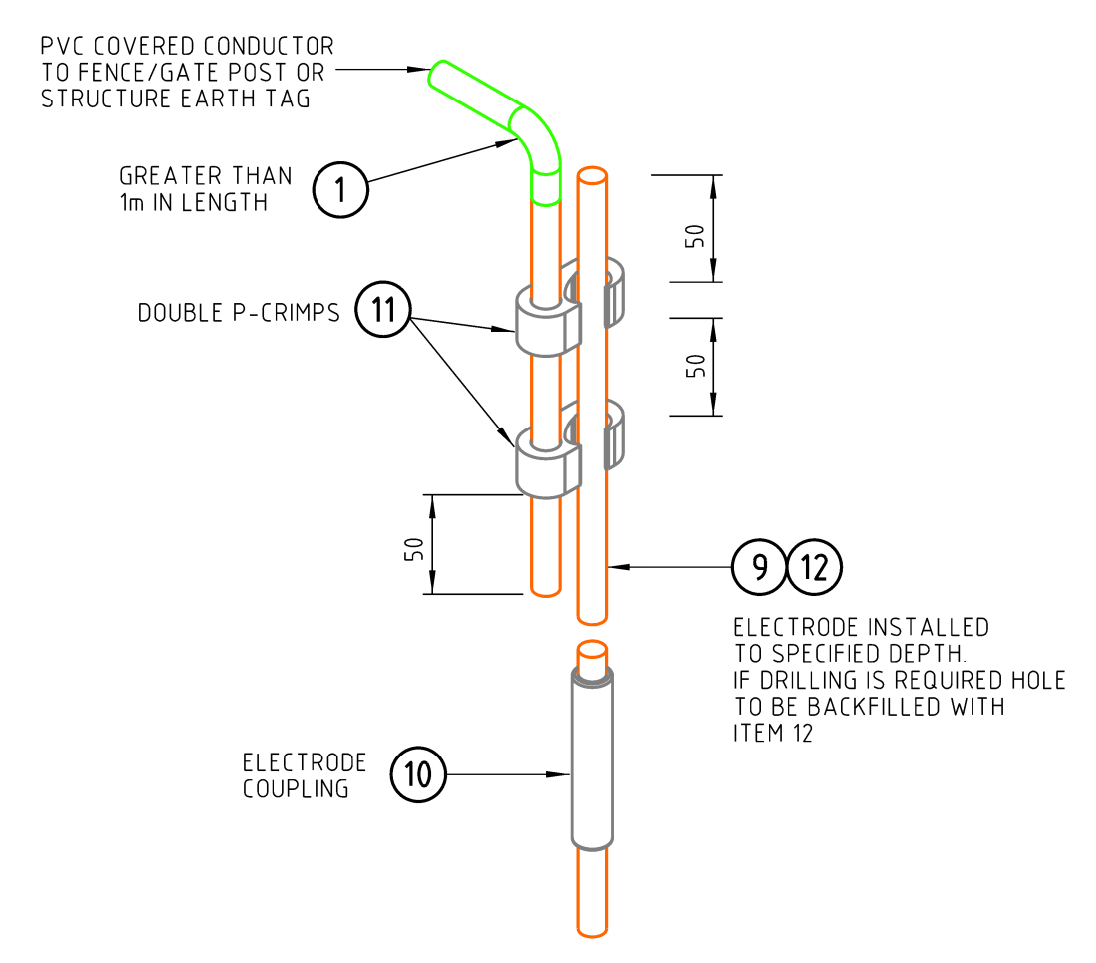
EARTH BAR CONNECTIONS DETAIL (EB)



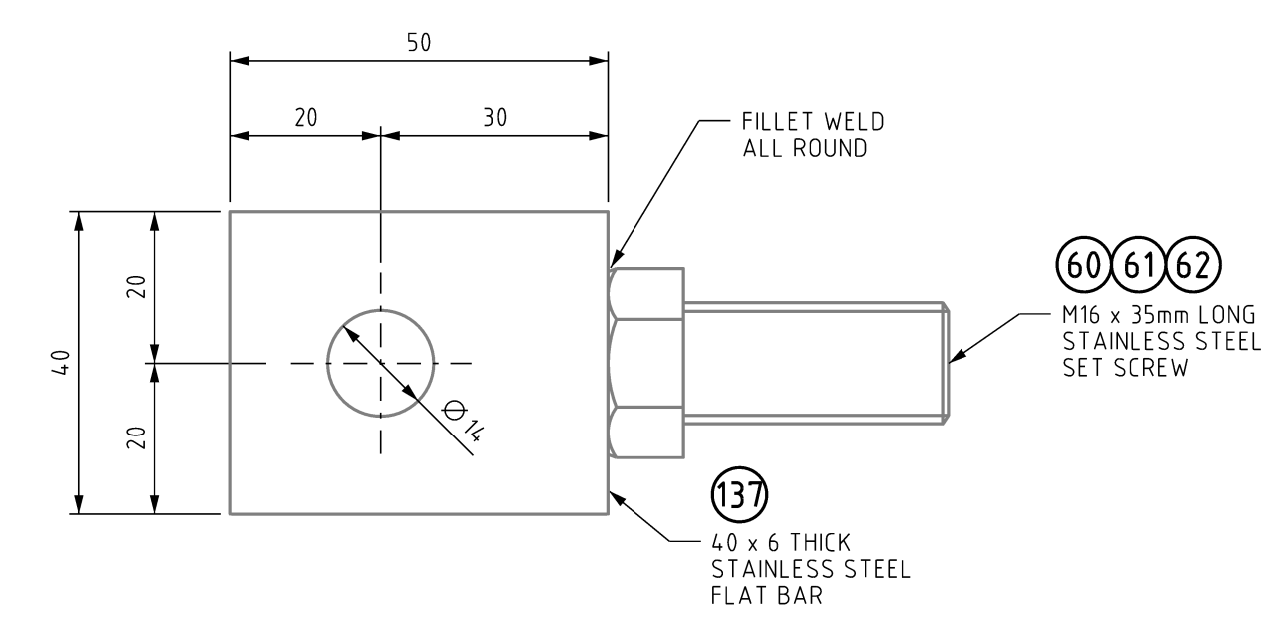
CONNECTION TO ELECTRODE DETAIL (CE)



EARTH CONDUCTOR ENGRAVED STAINLESS STEEL LABEL DETAIL (LC)



EARTH ELECTRODE DIRECT BURIED DETAIL (BE)



EMBEDDED FERRULE TAG DETAIL (EFT)

NOTES:

- 1 THE TOP LAYER OF CONCRETE REINFORCEMENT BARS ARE TO BE WELDED TO FORM A CONTINUOUS ELECTRICAL PATH KNOWN AS PERIMETER EARTH RING. ADD EXTRA BAR TO FACILITATE THE WELDING OF PERIMETER EARTH RINGS WHERE NECESSARY.
- 2 FOR ALL PIT CONSTRUCTION DETAILS AND LOCATION OF EARTHING FERRULES REFER TO DRAWING 220317.

CONSTRUCTION ISSUE

ITEM NO.	ITEM	DESCRIPTION	STOCK CODE	PRODUCT CODE	QTY.
137	EMBEDDED FERRULE TAG	STAINLESS STEEL GRADE TAG FOR EMBEDDED FERRULE FLAT BAR 40 x 6mm STAINLESS STEEL GRADE 316			AS REQD
62	FASTENERS WASHER	FASTENERS - WASHER - M16 BELLEVILLE STAINLESS STEEL GRADE 304	JBS 02750332		1 PER BOLT
61	FASTENERS WASHER	FASTENERS - WASHER - M16 FLAT STAINLESS STEEL GRADE 316	JBS 03756306		2 PER BOLT
60	FASTENERS BOLT & NUT	FASTENERS - BOLT & NUT - M16 HEX STAINLESS STEEL GRADE 316 - LENGTH TO SUIT			AS REQD
26	EARTH STUBB	EARTH STUBB - MC HEONAN REF DRAWING A3-520098	H108415		AS REQD
12	EARTHING COMPOUND	EARTHING COMPOUND - "GOOD EARTH" 15KG BAG USE AROUND ELECTRODE IN PIT	99861	JBS 02342012	AS REQD
11	CONNECTOR COMPRESSION	CONNECTOR - 070mm ² BURNDY STYLE YGHP CRMP	H31699	BURNDY YGHP20C20	AS REQD
10	ELECTRODE COUPLING	ELECTRODE COUPLING - Ø15mm BRASS	H31649	ERICO CCS6	1 MIN & AS REQD
9	ELECTRODE ROD	ELECTRODE ROD - Ø15mm - 1800 LONG COPPER CLAD	H31631	ERICO 615800EA	2 MIN & AS REQD
5	FASTENERS WASHER	FASTENERS - WASHER - M12 BELLEVILLE STAINLESS STEEL GRADE 304			1 PER BOLT
4	FASTENERS WASHER	FASTENERS - WASHER - M12 FLAT STAINLESS STEEL GRADE 316	49429	JBS 02750255	2 PER BOLT
3	FASTENERS BOLT & NUT	FASTENERS - BOLT & NUT - M12 HEX STAINLESS STEEL GRADE 316 LENGTH TO SUIT		JBS 03756209	AS REQD
2	LUG COMPRESSION	LUG - 070mm ² M12 TINNED COPPER HEX COMPRESSION	74831	UTLIX 0142325	AS REQD
1	CONDUCTOR	CONDUCTOR - 070mm ² STRANDED COPPER - BLACK PVC COVERED	60111		AS REQD

MATERIALS LIST

A. M. N. D. J. E. N. T. S. DWAN DINESH GARAGE ENGR. PETER WOLOSZYN APP'D DATE: 23/07/2012 ADDED FERRULE TAG	SCALE DESIGNED: PETER WOLOSZYN DRAWN: DINESH GARAGE CHECKED: CAMERON SHORTLAND APPROVED: CAMERON SHORTLAND DATE: 21/11/11 PROJECT NUMBER: SJ-05931	PRECAST 33kV JOINT BAY 6m x 2.4m WITH REMOVABLE RISER AND LID TYPE 33/6 & 33/2 CIVIL WORKS EMBEDDED AND ELECTRICAL EARTHING LAYOUT AND DETAILS	SHEET 01 OF 1
TYPE 33/6 JOINTING ARRANGEMENT AND PIT ASSEMBLY TYPE 33/6 PIT CONSTRUCTION DETAILS	226813 220317	ASSOCIATED DRAWINGS	DRAWING No: 212446