

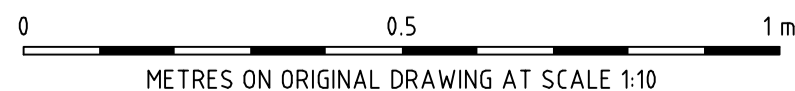
**REFERENCE DRAWINGS**

RETRACTABLE HANDGRIP STANCHION FOR UNDERGROUND PIT LADDERS	A1-120488
PIT LADDER WITH 75° SLOPE	A1-157908

- NOTES**
- ALL STEELWORK TO BE FABRICATED IN ACCORDANCE WITH AS 4100.
  - UNLESS NOTED OTHERWISE:
    - ALL HOT ROLLED FLATS TO BE GRADE 250 MINIMUM IN ACCORDANCE WITH AS 1594.
    - ALL HOT ROLLED SECTIONS TO BE GRADE 250 MINIMUM IN ACCORDANCE WITH AS 1131.
  - AFTER FABRICATION, ALL BURRS AND SHARP EDGES TO BE REMOVED.
  - ALL WELDING TO BE IN ACCORDANCE WITH AS 1554 PART 1.
  - CONSUMABLES (ELECTRODES) SHALL BE MATCHED WITH THE STEEL TYPE IN COMPLIANCE WITH AS/NZS 1554.1 TABLE 4.6.1(A) & THE RELEVANT COLUMNS OF THE TABLE DEPENDING ON THE TYPE OF WELDING PROCESS BEING UNDERTAKEN.
  - UNLESS NOTED OTHERWISE:
    - ALL WELDS SHALL BE 6mm CONTINUOUS FILLET WELDS, CATEGORY GP.
    - BUTT WELDS SHALL BE CONTINUOUS FULL PENETRATION, CATEGORY SP.
    - WELDS TO BE CARRIED OUT IN THE SHOP UNLESS NOTED AS 'WELD ON SITE'.
  - WELDS SHALL BE INSPECTED TO AS/NZS 1554.1 CLAUSE 7.3 (VISUAL INSPECTION OF WORK) UNLESS THE WELDING PROCESS IS SUPERVISED AND CARRIED OUT BY QUALIFIED PERSONNEL AS DEFINED IN AS/NZS 1554.1 CLAUSE 4.12.1 AND CLAUSE 4.12.2.
  - AFTER FABRICATION, ALL WELDS TO BE CHIPPED FREE OF SLAG.
  - AFTER FABRICATION, ALL STEELWORK TO BE HOT DIP GALVANISED TO AS 4680.
  - AFTER GALVANISING, ALL HOLES TO BE CLEARED AND SHARP EDGES TO BE REMOVED.
  - WHERE THE GALVANISING FINISH HAS BEEN REMOVED, AREA TO BE TREATED WITH COLD GALVANISING PAINT SIMILAR TO GALMET OR ZINCFIX. COATINGS TO BE APPLIED IN ACCORDANCE WITH THE MANUFACTURERS INSTRUCTIONS.
  - UPON ASSEMBLY, APPLY LOCTITE NICKEL ANTI-SEIZE LUBRICANT OR EQUIVALENT TO ALL THREADED COMPONENTS. NOTE, THE COMPOUND TO BE SUITABLE FOR STAINLESS STEEL THREADS.

THIS DRAWING SHOULD ONLY BE USED WHEN A COMPLYING 75° LADDER CANNOT BE INSTALLED. REFER DRAWING A1-157908 FOR DETAILS

**NOTE**  
FALL ARREST DEVICE REQUIRED WHEN USING A VERTICAL LADDER EXCEEDING A DEPTH OF 2m



<b>CAD DRAWING</b> DO NOT MANUALLY AMEND	<b>AMENDMENTS</b>	<b>10. DRAWING BORDER UPDATED:</b> C. SANDY 6.05.2004 CHECKED PHIL HUDSON
5. STYLE A LADDER DELETED STYLE B ALTERED TO CONFORM TO AUSTRALIAN STANDARD AS 1579-1992. C. SANDY 16.5.94 PROJ No. 500055 CHECKED KEM	6. NOTE ADDED REF G-2 WORKCOVER CONSULTED IN GRANTING CONCESSION. C. SANDY 13.96 PROJ No. 544983 CHECKED G.A.	11. LADDER CLEARANCE NOTE AT BOTTOM OF LADDER CLARIFIED. REF F-3. LADDER STILE FOOT FEELING BAGGAGE ADDED TO MOUNTING BRACKET. REF F-246. BOTTOM OF LADDER. REF F-246. WALL SECURING ANCHORS MODIFIED. REF C-7 & A-8. ADDITIONAL HOLES ADDED TO WALL MOUNTING SUPPORTS. REF A&B-9. C. SANDY 10.04.2013 APPROVED P. HUDSON
7. NOTES UPDATED TO CURRENT STANDARDS. C. SANDY 3-5-2000 APPROVED (E.C.) B.L. APPROVED (D.S.) K.G.	8. ANCHORS MADE STAINLESS STEEL P. BARNES 15-1-2002 APPROVED (E.C.) B.L. APPROVED (D.S.) K.G.	12. RING WELDING DETAIL ALTERED. LOCATION OF INTERMEDIATE SUPPORT CLARIFIED. NOTE NOT FOR CONSTRUCTION ADDED REF G-8. NEW STANDARD NOTES ADDED. MIN CLEARANCE BETWEEN STILES RETRACTABLE HANDGRIP STANCHIONS ADDED. REF B-2 C. SANDY 6.05.2004 CHECKED PHIL HUDSON

× DIMENSION 200mm CAN BE REDUCED TO 150mm ONLY WHEN DIMENSIONS OF OPENING ARE 914mm x 914mm. REDUCE OVERALL SIZE OF LADDER INTERMEDIATE SUPPORT FROM 215mm TO 165mm & TOP SUPPORT BRACKET FROM 185 TO 135 TO SUIT. (WORKCOVER GRANTED APPROVAL ON 1st MARCH 1996)

<b>NETWORK STANDARD</b>	SCALE	AS SHOWN
<b>Ausgrid</b>	DESIGNED	ROLLEY MEE
	DRAWN	COLIN SANDY
MECHANICAL DESIGN 570 GEORGE STREET SYDNEY NSW 2000	CHECKED	KEITH MOBBS
	APPROVED	ROLLEY MEE
	DATE	16.5.1994
	PRJ/TRK No.	-
	PROJECT NUMBER	500055

<b>STANDARD UNDERGROUND PIT LADDER ARRANGEMENT AND DETAILS</b>			
DRAWING No	49813	SHEET	1
AMD	10	SIZE	A1