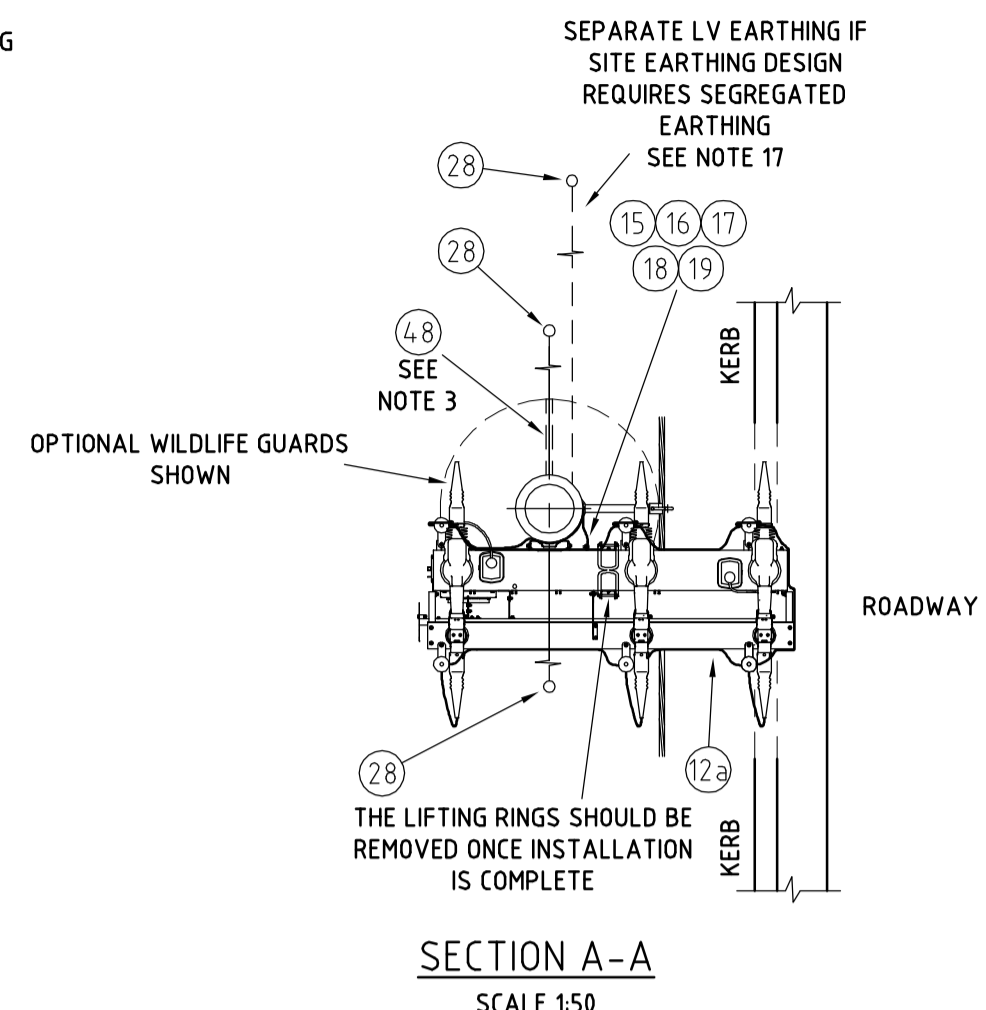
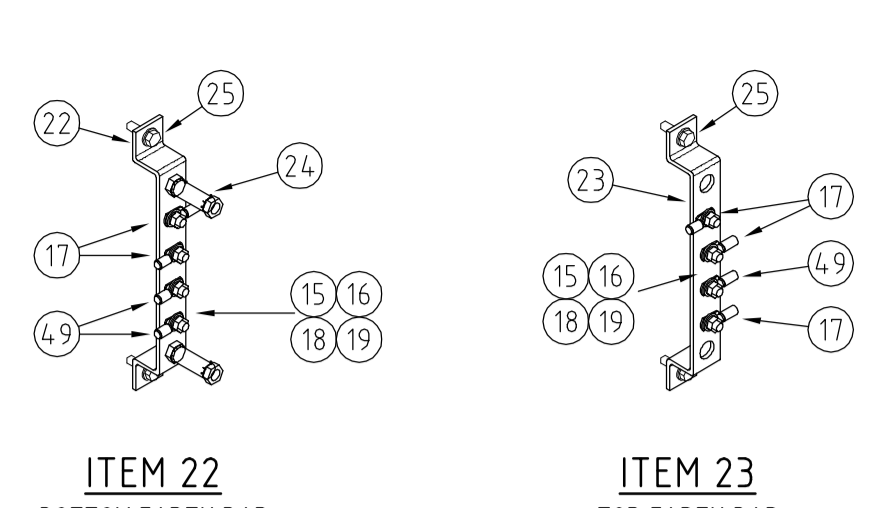
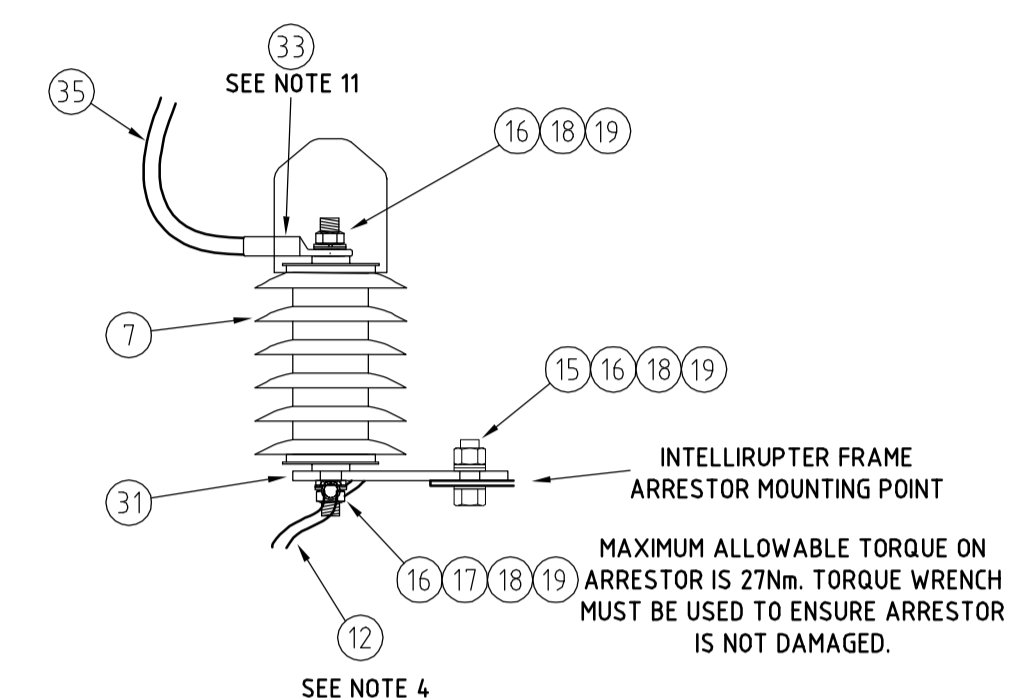


NOTES

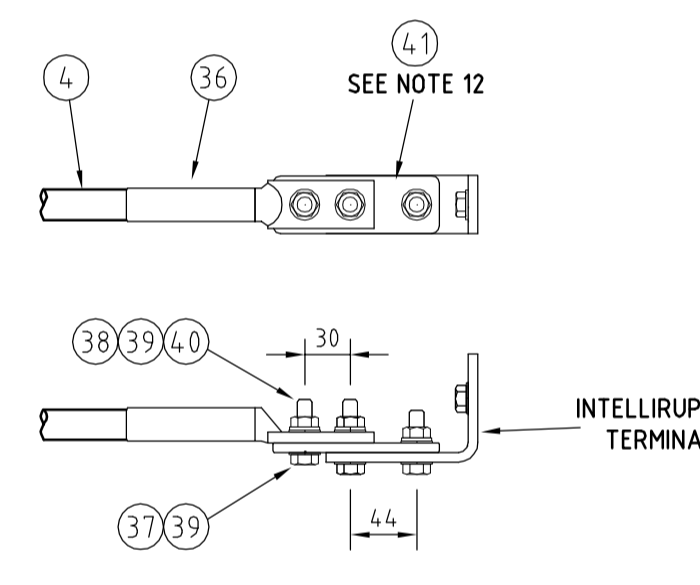
- MINIMUM CLEARANCE 11kV TO EARTH IS TO BE GREATER THAN 200mm. HV PHASE TO PHASE CLEARANCE IS TO BE GREATER THAN 280mm.
- LV ATTACHMENT POINT IS TO BE DETERMINED BASED ON GROUND CLEARANCE REQUIREMENTS WHILST GIVING CONSIDERATION TO AUSGRID'S ELECTRICAL SAFETY RULES MINIMUM SAFE WORKING DISTANCES. WHERE BARE LV MAINS EXIST THEY SHALL BE CONVERTED TO ABC FOR AT LEAST ONE SPAN EITHER SIDE OF THE PULSECLOSER. ITEM 43 IS REQUIRED FOR ALL INTELLIRUPTER INSTALLATIONS.
- UNDERGROUND EARTH CABLES ARE TO BE LAID IN SUITABLY SIZED RIGID UPVC ORANGE LD CONDUIT TO A DISTANCE OF 500mm FROM THE POLE. THIS CONDUIT RUN IS TO CONSIST OF A BEND OF A 300mm MINIMUM RADIUS AND A SHORT LENGTH OF STRAIGHT CONDUIT. THE TOP OF THE BEND IS TO BE BUTTED AGAINST THE BOTTOM OF THE STEEL EARTH CABLE COVER.
- HV SURGE ARRESTORS ARE TO BE EARTHED BY DAISY CHAINING AND ELECTRICALLY BONDED TO MAIN EARTH CONDUCTOR USING 70mm² PVC INSULATED CONDUCTOR (ITEM 12a).
- 95mm² ALUMINIUM EARTH CONDUCTORS SHALL BE USED FROM THE BOTTOM EARTH BAR TO 300mm ABOVE GROUND WHERE 70mm² COPPER EARTH CONDUCTORS WILL BE EXTENDED VIA BIMETALLIC LINKS TO THE EARTH ELECTRODES. THE BIMETALLIC LINKS ARE TO BE STAGGERED UNDER THE STEEL COVER.
- INSTALL 4 x 12mm (ITEM 25) COACH SCREWS IN ADDITION TO KING BOLTS AS PER MANUFACTURER'S INSTRUCTIONS TO ENSURE STABILITY OF INTELLIRUPTER UNIT.
- DANGER SIGNS TO BE INSTALLED ON BOTH FRONT AND REAR OF POLE. SIGNS MUST BE BENT AROUND POLE BEFORE SECURING.
- WHERE CCT MAINS ARE USED, STANDARD EARTHING POINTS AND COVERS ARE TO BE INSTALLED AS DETAILED IN NS126.
- INTELLIRUPTER SIGNS (ITEMS 44a, 44b & 44c) ARE TO BE BENT AROUND POLE BEFORE SECURING.
- THE SERIAL NUMBER SIGN (ITEM 44a & DETAIL 6) IS TO BE MOUNTED ON THE SAME POLE FACE AS THE INTELLIRUPTER 1800mm ABOVE GROUND LEVEL AT ALL SITES. THE SIGN IS TO BE MADE FROM 25mm HIGH UV STABLE WEATHERPROOF LETTERING AND CAN UTILISE POLE NUMBERING METHODS OR SIMILAR.
- THE EARTH CABLE SIGN (ITEM 44b) IS TO BE MOUNTED BELOW THE EARTH BAR AT ALL SITES. THE UNDERGROUND EARTH CABLE SIGN (ITEM 44c) IS TO BE MOUNTED ADJACENT TO THE POLE NUMBER.
- THE INTELLIRUPTER IS TO BE LABELLED IN ACCORDANCE WITH NS158 TABLE 4.6 - 'RECLOSERS & SECTIONALISERS'. THE POLE NUMBER IS TO BE INSTALLED IN ACCORDANCE WITH NS148.
- INSTALL MEDIUM WALLED MASTIC LINED BLACK HEATSHRINK OVER THE BARE LUG BARREL AND CABLE INSULATION.
- INTELLIRUPTERS DELIVERED EARLIER IN THIS CONTRACT WILL REQUIRE ITEM 41.
- ANY ANTENNA USED MUST HAVE AN RF INDUSTRIES N-243 W ADAPTER M/M BARREL FITTED. THE ANTENNA LISTED AS ITEM 45 CAN BE ANY OF THE FOLLOWING:
FOR GENERAL USE A BENELEC 02451A CELLULAR UNITY GAIN ALL BAND MARINE ANTENNA CAN BE USED.
FOR AREAS WHERE SIGNAL STRENGTH IS LOW USE A MOBILE ONE CN812K HIGH PERFORMANCE TRIBAND CELLAR ANTENNA.
FOR AREAS OF HIGH SIGNAL STRENGTH USE AN ELEMENT14 173519201 MULTICOMP - OS-UMTS-0103-CO ANTENNA.
- A STEEL EARTH CABLE COVER (ITEM 14) IS TO BE CONNECTED TO THE BOTTOM EARTH BAR (ITEM 22) AS SHOWN IN DETAIL 7.
- A ROLL PIN (ITEM 47) IS TO BE FITTED INTO EACH OF THE PHASE TERMINALS OF THE NON DISCONNECTOR SIDE, THROUGH THE COPPER PALM. THE PIN IS TO FINISH FLUSH OR JUST BELOW THE CABLE LUG CONTACT SURFACE OF THE PALM.
- FOR POLES GREATER THAN 12.5 METRES THE BOTTOM OF THE INTELLIRUPTER SHOULD BE MOUNTED NOT MORE THAN 8 METRES ABOVE THE GROUND TO ALLOW FOR MANUAL OPERATION. EXCEPTIONS TO THIS MAY BE ACCEPTABLE IF LONGER OPERATING STICKS HAVE BEEN APPROVED FOR USE IN THE AREA.
- IF THE SITE SPECIFIC EARTHING DESIGN REQUIRES THE LV MAINS NEUTRAL TO BE CONNECTED TO THE INTELLIRUPTER EARTHING SYSTEM, DETAIL 6 SHOULD BE USED FOR THE CONNECTION. IF TWO LV MAINS CABLES ARE ON THE POLE, ONLY ONE SERVICE IS TO BE CONNECTED. FOR A COMBINED EARTHING SYSTEM A CONNECTION IS TO BE MADE TO THE TOP EARTH BAR AS SHOWN IN DETAIL 6. FOR A SEGREGATED EARTHING SYSTEM THE CABLE IS TO BE RUN DOWN THE POLE USING ITEM 12b TO A SEPARATE LV EARTH ROD SYSTEM.



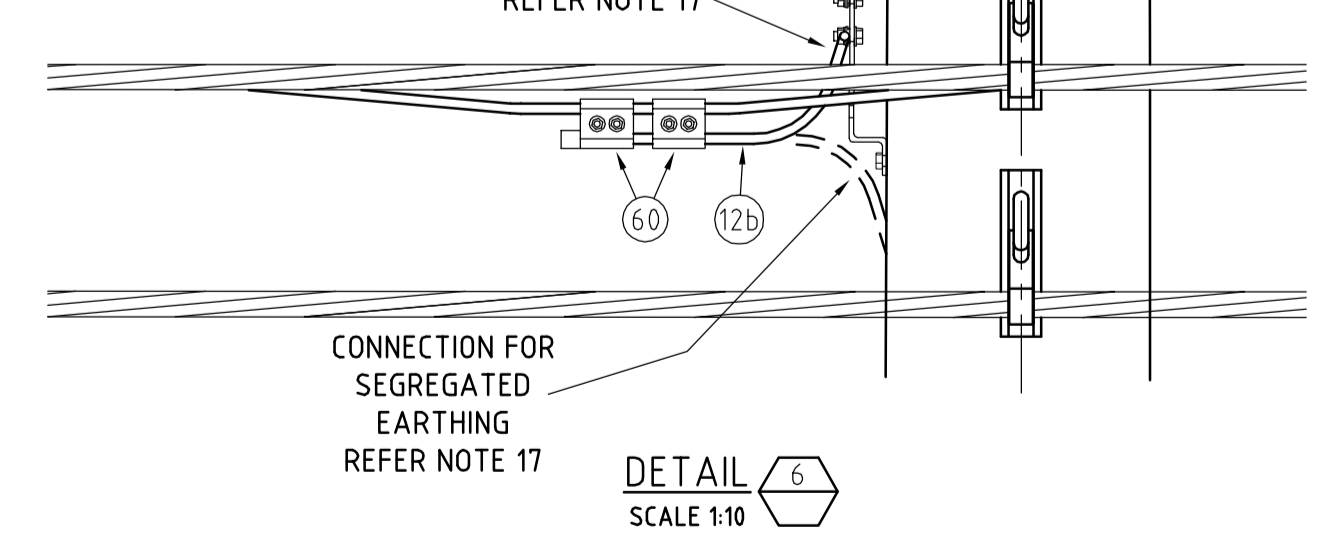
DETAIL 1 SCALE 1:10



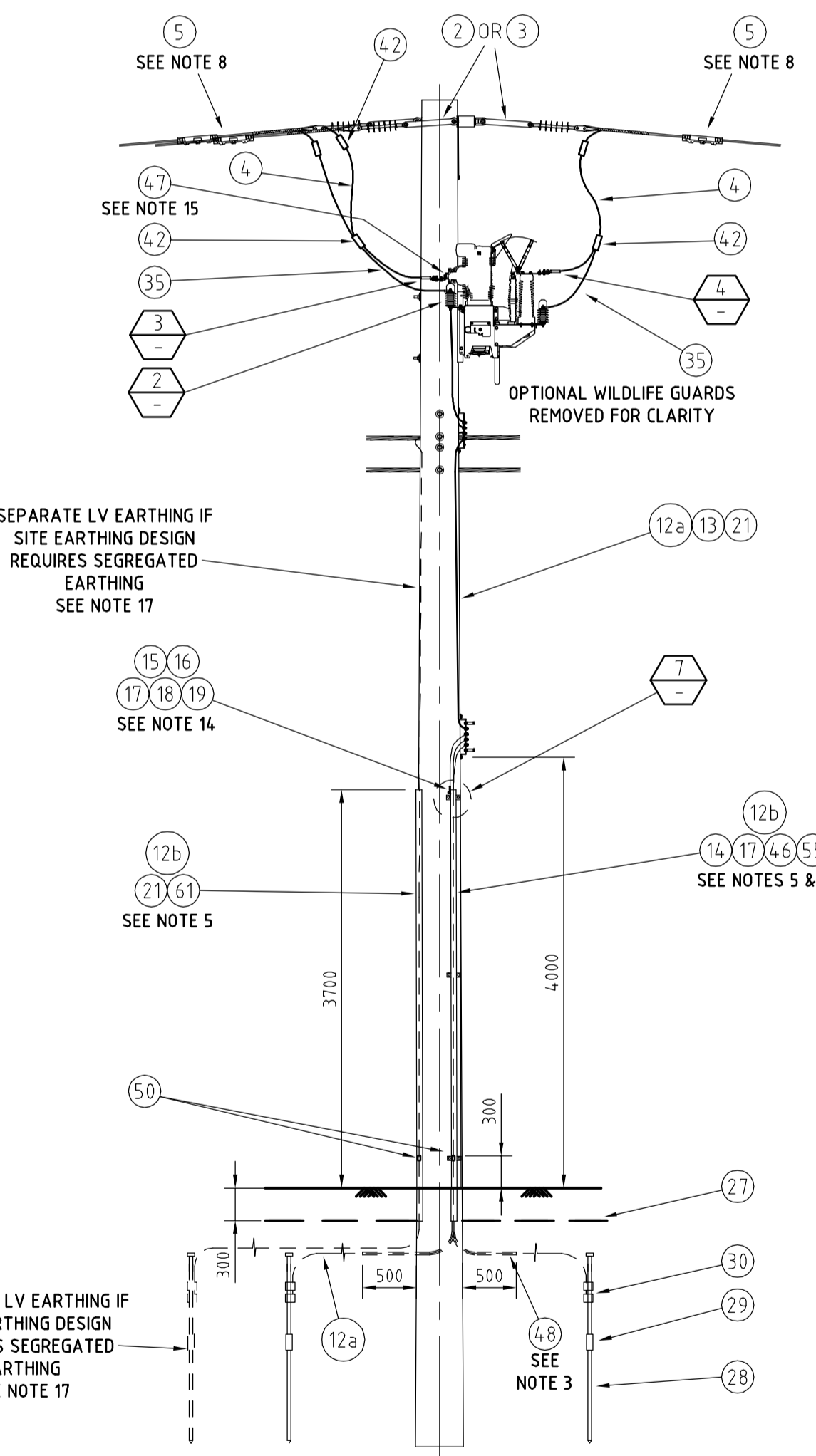
DETAIL ITEM 41 SCALE 1:5



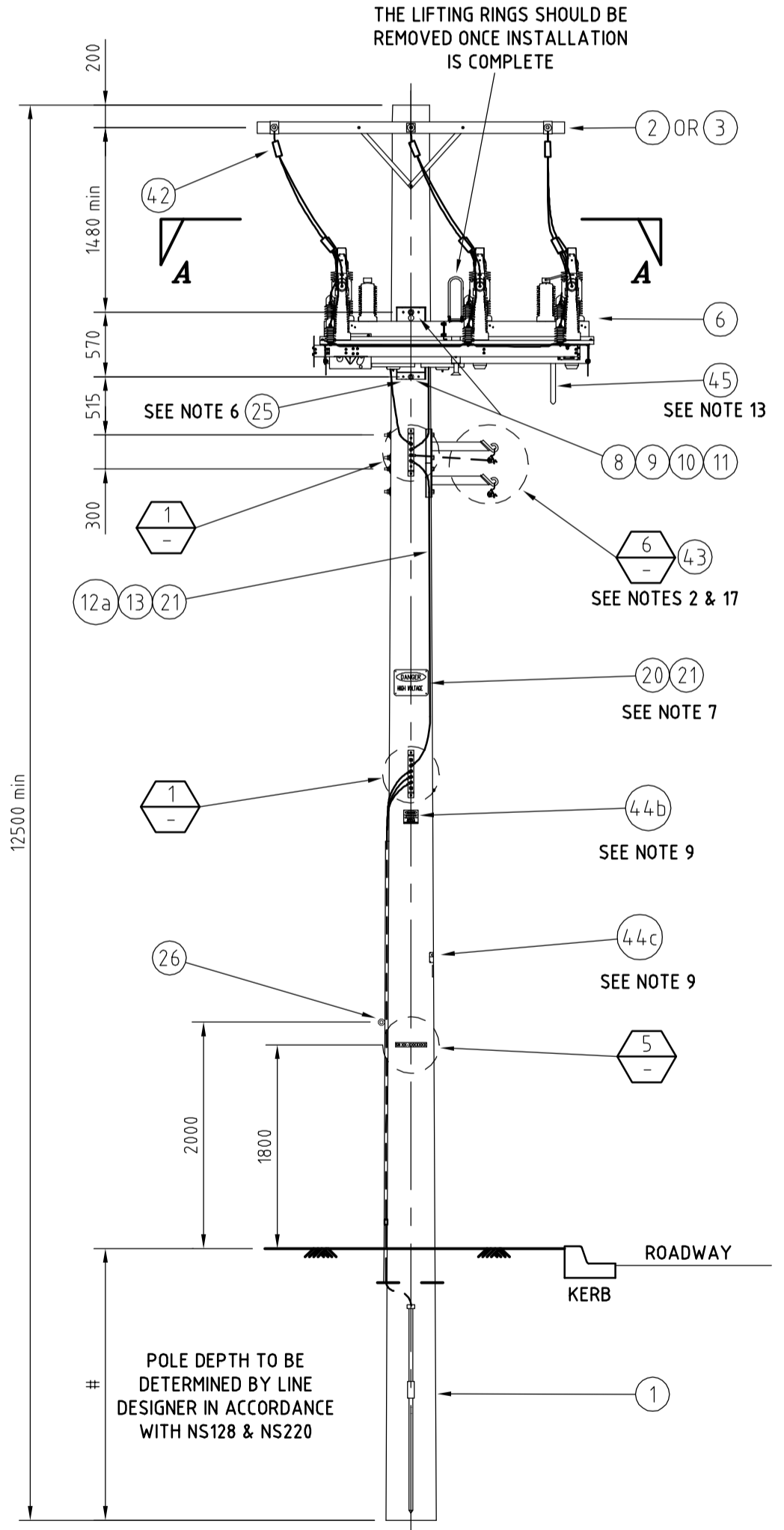
SN XX-XXXXXXX ITEM 44a SEE NOTE 9 DETAIL 5 SCALE 1:5



DETAIL 6 SCALE 1:10



SIDE VIEW SCALE 1:50



FRONT VIEW SCALE 1:50

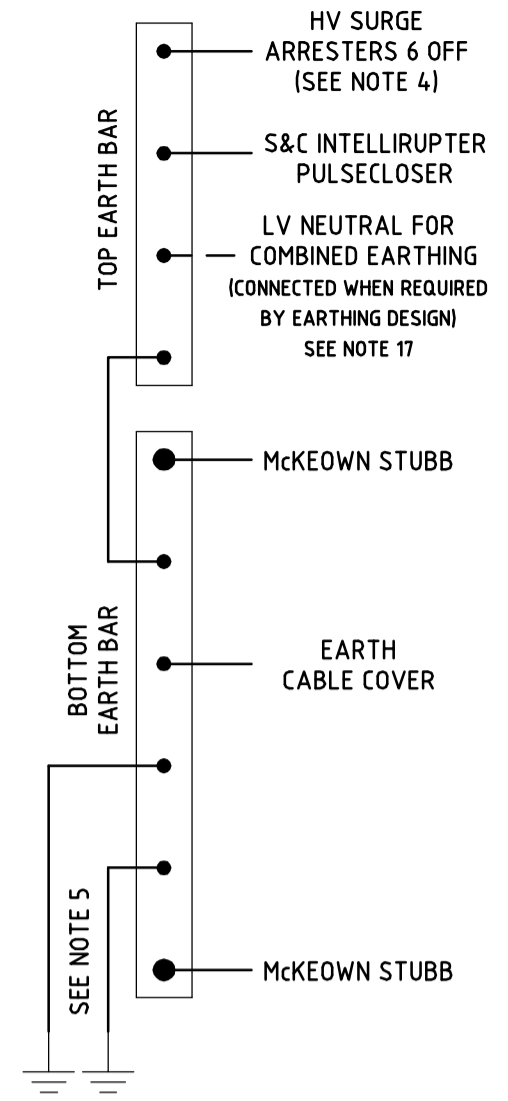
AN EARTHING DESIGN MUST BE UNDERTAKEN FOR EACH SITE. THE EARTHING SHOWN ON THIS DRAWING IS INDICATIVE ONLY.

INSTALLATION FOR POLES GREATER THAN 12.5 METRES

SEE NOTE 16 SCALE 1:50

EQUIPMENT WEIGHTS	
INTELLIRUPTER	460kg

EARTHING SCHEMATIC



ITEM	DESCRIPTION	DWG No	STOCK CODE	QTY.
61	PROTECTOR - BLACK EARTH CABLE GUARD	205775	157552	AS REQ.
60	IPC 95-150 LV ABC / 95-150 LV ABC (SEE NOTE 17)	'DETAIL 6'	176591	2
59	WIRE - TIE PREFORMED INSULATED FOR CCT TOP SUIT CONDUCTOR			6
58	INSULATOR - PIN POST LONG STUD (FOR CCT)		145052	6
57	WASHER - CONICAL M16 GALVANISED	517278	H39647	6
56	WASHER - CONICAL M12 GALVANISED	517278	H39639	4
55	WASHER - FLAT M12 GALVANISED	518081	177982	8
54	BOLT & NUT - M12x130mm HEX GALVANISED	515466	46805	4
53	BRACE - CROSSARM FLAT 690mm GALVANISED	514385	H17738	4
52	BLOCK - GAIN ALUMINIUM 100mm		146274	2
51	CROSSARM - WOOD 2400x100x100		17589	2
50	BI-METALLIC CRIMP LINK FOR 95mm ² TO 70mm ² CABLE		H107797	AS REQ.
49	BI-METALLIC CRIMP LUG FOR 95mm ² AL CABLE		58743	AS REQ.
48	CONDUIT COVER FOR EARTH CABLES - SEE NOTE 3			AS REQ.
47	TERMINAL ROLL PIN - SEE NOTE 15			3
46	M12 x 50mm GALV. COACHSCREW		50476	6
45	ANTENNA - SEE NOTE 13			PURCHASE
44c	INTELLIRUPTER SIGN - UNDERGROUND EARTH CABLES (SEE NOTE 9)	222408	182141	1
44b	INTELLIRUPTER SIGN - EARTH CABLES (SEE NOTE 9)	222408	182142	1
44a	INTELLIRUPTER SIGN - SERIAL NUMBER (SEE NOTE 9)	'DETAIL 5'		1
43	ABC INTERMEDIATE CONSTRUCTION (1-70) WITH STAND OFF (SEE NOTE 17)	513981 18409	142554 (STAND OFF)	AS REQ.
42	CLAMP - PARALLEL GROOVE (TO SUIT CONDUCTOR)	514099		12
41	CONVERSION FLAG - TINNED COPPER 38mm x 6.35mm (SEE DETAIL)			FABRICATE
40	WASHER - M10, FLAT, STAINLESS STEEL	518081	49411	36
39	WASHER - M10, BELLEVILLE, STAINLESS STEEL	518082	177296	18
38	NUT - M10, HEX, STAINLESS STEEL	515467	H39401	18
37	BOLT - M10 x 30mm, HEX, STAINLESS STEEL	515467	45088	18
36	LUG - COMPRESSION, BI-METALLIC 2 x M10 HOLES, TO SUIT CONDUCTOR	514053		6
35	CONDUCTOR - 35mm ² , 19/153, Cu LDPE (DROPPER CABLE)		H14578	AS REQ.
34	LUG KIT - FOR 35mm ² HV DROPPER CABLE		H125260	2
33	LUG - CRIMP, COPPER, M12, FOR 35mm ² COPPER CONDUCTOR			SEE ITEM 42
32				
31	TINNED COPPER PLATE	116989 (ITEM 3)	91132	6
30	CONNECTOR - COPPER, COMPRESSION, 70mm ² CONDUCTOR TO Ø15 ROD		H31699	AS REQ.
29	COUPLER - EARTH ELECTRODE, TO SUIT Ø15 ROD		H31649	AS REQ.
28	ELECTRODE - DRIVEN EARTH, Ø15 x 1800mm		H31631	AS REQ.
27	COVER STRIP - CABLE, 150mm WIDE		151100	AS REQ.
26	COACH SCREW - EYE, M6, GALVANISED			PURCHASE
25	COACH SCREW - M12 x 100mm, GALVANISED		H40484	8
24	EARTH STUB - MCKEOWN		H108415	2
23	TOP EARTH BAR - FLAT, TINNED COPPER, 50.8mm x 6.3mm	'DETAIL T'	182110	1
22	BOTTOM EARTH BAR - FLAT, TINNED COPPER, 50.8mm x 6.3mm	'DETAIL T'	182110	1
21	CLOUT - GALVANISED, Ø2.8 x 30mm		50971	AS REQ.
20	SIGN - DANGER HIGH VOLTAGE		H47012	2
19	NUT - M12, STAINLESS STEEL	515467	8987	AS REQ.
18	WASHER - BELLEVILLE, M12, STAINLESS STEEL	518082	175903	AS REQ.
17	LUG - CRIMP, M12, FOR 70mm ² COPPER	31077	74831	AS REQ.
16	WASHER - FLAT, M12, STAINLESS STEEL	518081	49429	AS REQ.
15	SET SCREW - M12 x LENGTH TO SUIT, STAINLESS STEEL	515467		AS REQ.
14	EARTH CABLE COVER - STEEL	222407	182121	1
13	SADDLES - TO SUIT CABLE			PURCHASE
12b	CONDUCTOR - SINGLE CORE OF 95mm ² ABC			AS REQ.
12a	CONDUCTOR - 19/2.14 Cu BLACK PVC INSULATED HD (70mm ² EARTH)		60111	AS REQ.
11	WASHER - FLAT ROUND, M20, GALVANISED	518081	177986	5
10	WASHER - CONICAL, M20, GALVANISED	517278	H39655	3
9	WASHER - SQUARE, M20 x 75 x 75 x 6mm	518081	H39231	2
8	BOLT & NUT - M20, HEX, GALVANISED, LENGTH TO SUIT	515466		2
7	ARRESTER & CAP - 11kV		111948	6
6	S&C INTELLIRUPTER PULSECLOSER		181888	1
5	CCT EARTHING POINT COVER		144741	6
4	COVERED CONDUCTOR THICK - TO SUIT FEEDER RATING (MINIMUM CCT 120)			AS REQ.
3	11kV OVERHEAD ARRANGEMENT 2-11CCT (MINUS BRIDGING BUT WITH EXTENSIONS)	174962	79251 (EXTENSIONS)	1
2	11kV OVERHEAD ARRANGEMENT 2-11 (MINUS BRIDGING BUT WITH EXTENSIONS)	513915	79251 (EXTENSIONS)	1
1	POLE - WOOD, TO SUIT (MINIMUM 12.5m x 124m)			1

CAD DRAWING... 2 NEW AUTOCAD DRAWING MADE...

3. HV MAINS CONNECTION AND HV CROSS ARM REARRANGED AND EXTENSION BRACKETS STAGGERED TO PARALLEL STAND OFF BRACKET ADDED TO LV ABC CONNECTION ITEM 43.

4. DETAIL 6, NOTE 17 AND ITEMS 60 & 61 ADDED. COMBINED EARTHING NOTE ADDED TO LV NEUTRAL CONNECTION ON EARTHING SCHEMATIC.

6. EARTH CONNECTION TO ITEM 14 ALTERED TO COMPLY WITH NETWORK STANDARD 127. DETAIL 7 ADDED.

5. STOCK CODE FOR EXTENSIONS USED IN ITEMS 2 & 3 UPDATED. DESCRIPTION OF ITEM 60 UPDATED.