

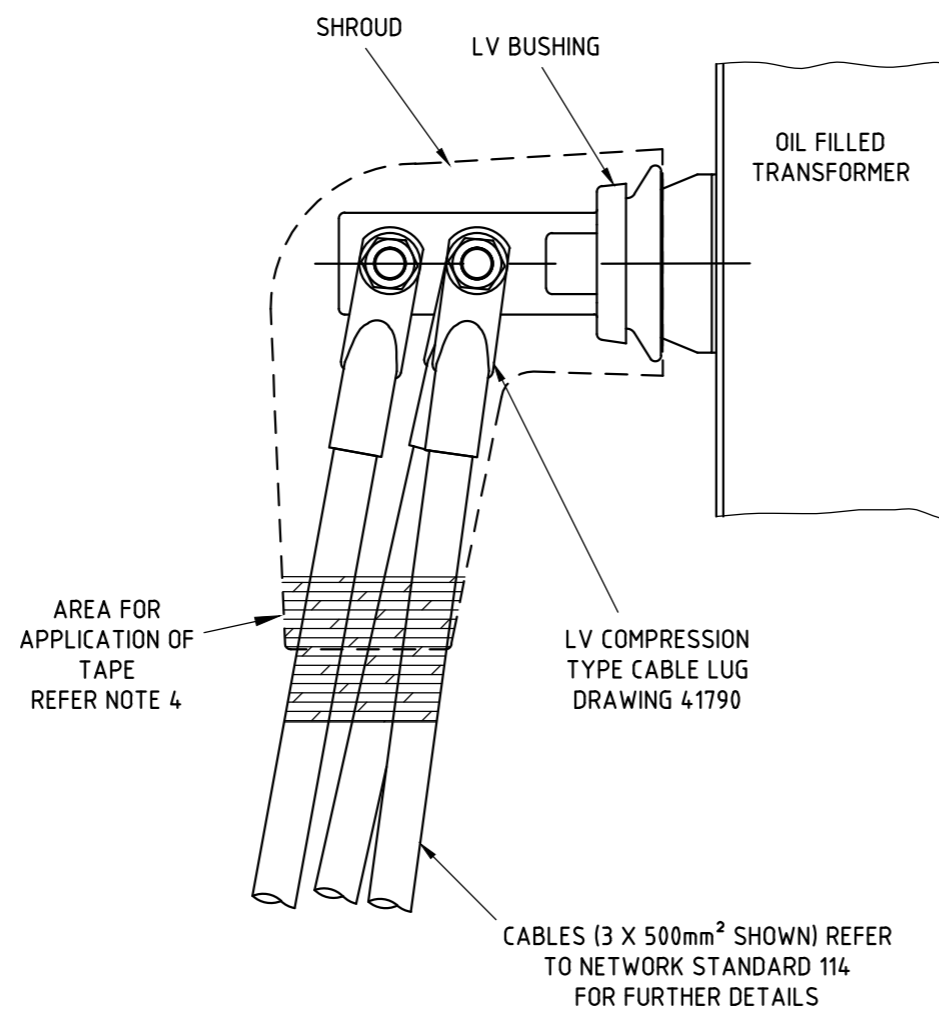
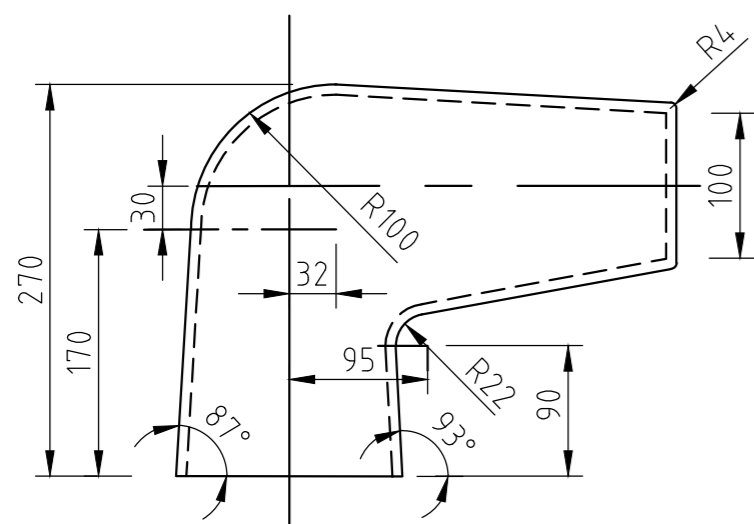
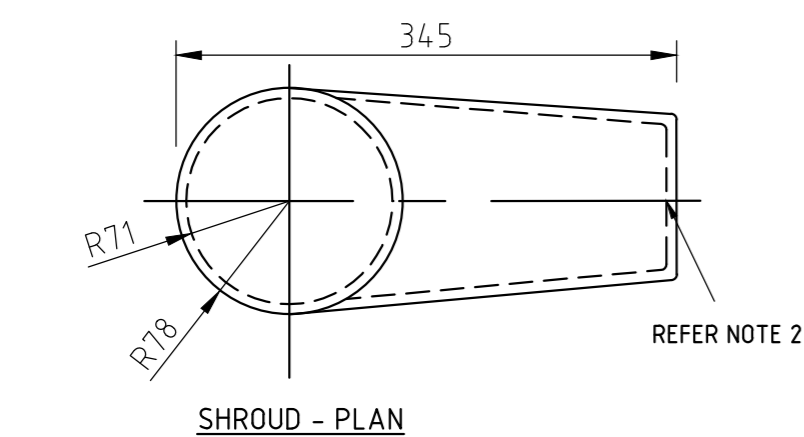
NOTES

MANUFACTURER:

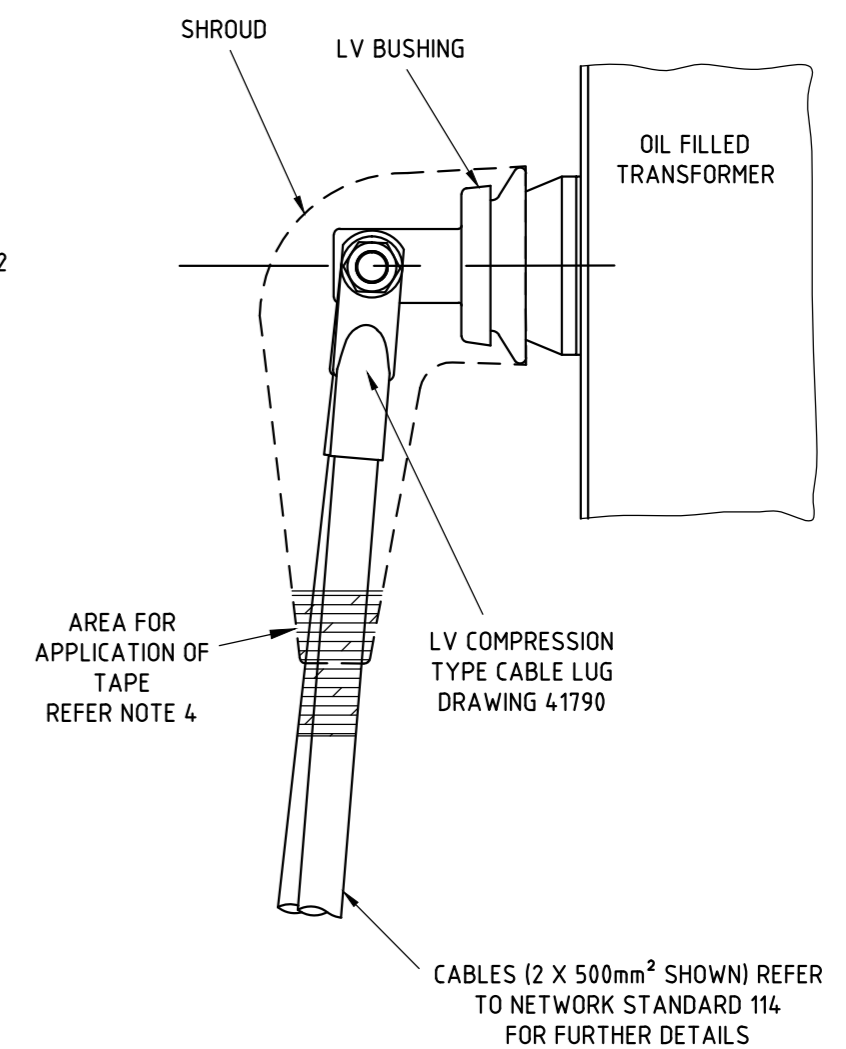
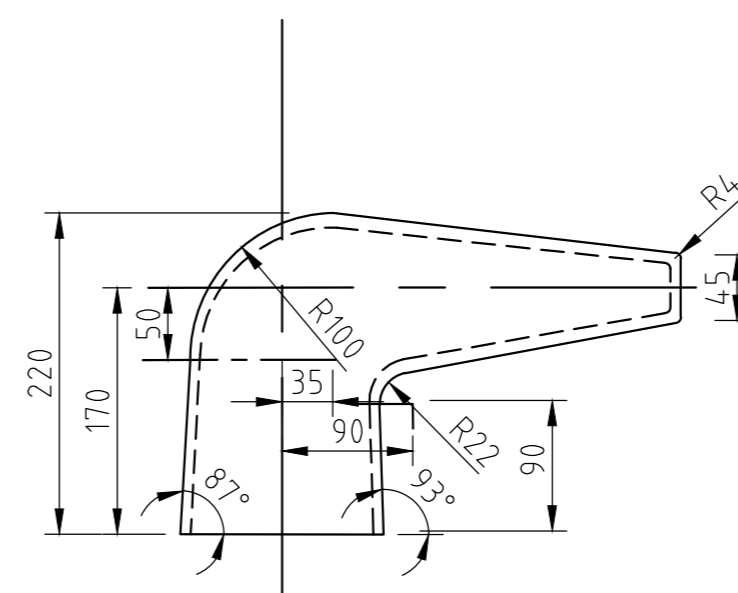
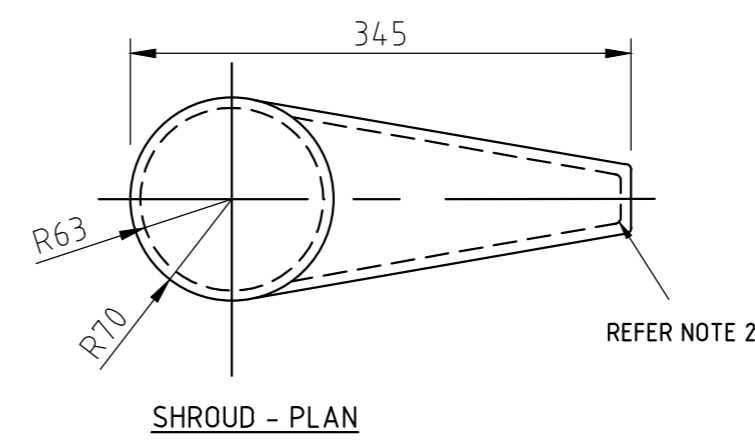
- A. LV TRANSFORMER SHROUD TO BE MADE OF NEOPRENE RUBBER AND TO BE COLOURED BLACK.
- B. EXTERNAL SURFACE OF SHROUD TO BE SMOOTH AND FREE FROM CAVITIES.
- C. THE MANUFACTURER IS TO ELECTRICALLY TEST THE LV TRANSFORMER SHROUD IN ACCORDANCE WITH THE FOLLOWING:-
 - INSULATION RESISTANCE SHALL NOT BE LESS THAN 5000 MEGOHMS AT 2500VDC BETWEEN INNER AND OUTER SURFACE.
 - FILL SHROUD WITH WATER, THEN IMMERSE SHROUD IN A TANK OF WATER TO WITHIN 25mm OF SHROUD RIM. APPLY 5000VAC BETWEEN THE TANK WATER AND WATER INSIDE THE SHROUD FOR ONE MINUTE. THE MAXIMUM LEAKAGE CURRENT IS NOT TO BE GREATER THAN 10mA FOR THIS PERIOD OF TIME.

INSTALLATION:

- 1. TO BE READ IN CONJUNCTION WITH NETWORK STANDARD 114.
- 2. THIS END TO BE REMOVED BY SUBSTATION CONSTRUCTION STAFF. SUFFICIENT MATERIAL IS TO BE REMOVED TO PROVIDE A TIGHT FIT FOR CABLES.
- 3. SHROUDS ARE TO BE SLID OVER CABLES BEFORE BOLTING CABLES TO TRANSFORMER BUSHING. UNDER NO CIRCUMSTANCES ARE SHROUDS TO BE CUT, SPLIT OR PUNCTURED. DAMAGED SHROUDS ARE TO BE REPLACED BEFORE COMMISSIONING THE TRANSFORMER.
- 4. SHROUDS ARE TO BE PUSHED OVER TRANSFORMER BUSHINGS. ADHESIVE OR TAPE MUST NOT BE USED TO FIX SHROUDS TO BUSHINGS. TAPE IS USED AROUND THE CABLE OPENING ONLY FOR RETENTION ON CABLES AND VERMIN SCREENING. ONLY AUSGRID APPROVED TAPE TO STOCK CODE 53777 CAN BE USED.



1500 kVA
STOCK CODE 182363



750 to 1000 kVA
STOCK CODE 113936

CAD DRAWING DO NOT MANUALLY AMEND	AMENDMENTS	
	1	2
1. REDRAWN IN AUTOCAD. SHROUD FOR 1500kVA TRANSFORMER ADDED. TERMINATION DETAILS ADDED. MARKING REMOVED. STOCK CODES ADDED. INSTALLATION NOTES ADDED. MANUFACTURER'S NOTES ALTERED. C.MABBUTT 9.8.11 CHECKED: P.TURRIN APPROVED: P.JARVIS	2. DIMENSIONS FOR 1500kVA SHROUD AMENDED FOR MANUFACTURE. C.MABBUTT 14.9.11 CHECKED: P.TURRIN APPROVED: P.JARVIS	3. NOTE 4, UPDATED. AREA FOR TAPING SHOWN. PN OPEX 6568-1-1-3 P.JARVIS 20.7.16 CHECKED: D.OZGUR APPROVED: D.GRCEV

CONSTRUCTION

NETWORK STANDARD
Ausgrid
NETWORK RISK AND PLANNING
PRIMARY SYSTEMS
TRANSMISSION & DISTRIBUTION SUBSTATION ENGINEERING
570 GEORGE STREET, SYDNEY

SCALE	1:5
DESIGNED	
DRAWN	
CHECKED	
APPROVED	
DATE	
PROJECT NUMBER	
PROJTRAK NUMBER	

SIGNED ON ORIGINAL

LOW VOLTAGE TRANSFORMER
TERMINATION SHROUD
FOR 750kVA, 1000kVA AND 1500kVA OIL
FILLED TRANSFORMERS
ARRANGEMENT AND DETAILS

SIZE	DRAWING No	SHEET	AMD
A2	48546	1	3