

A

B

C

D

E

F

A

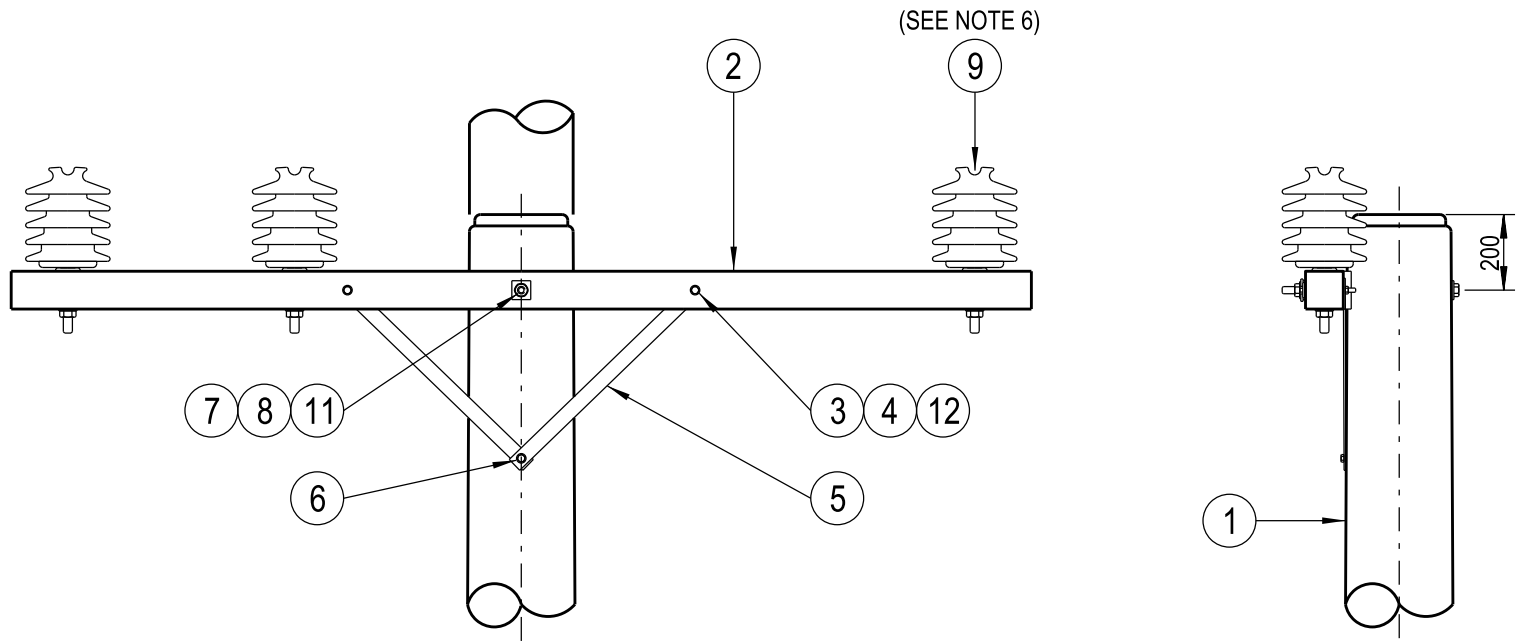
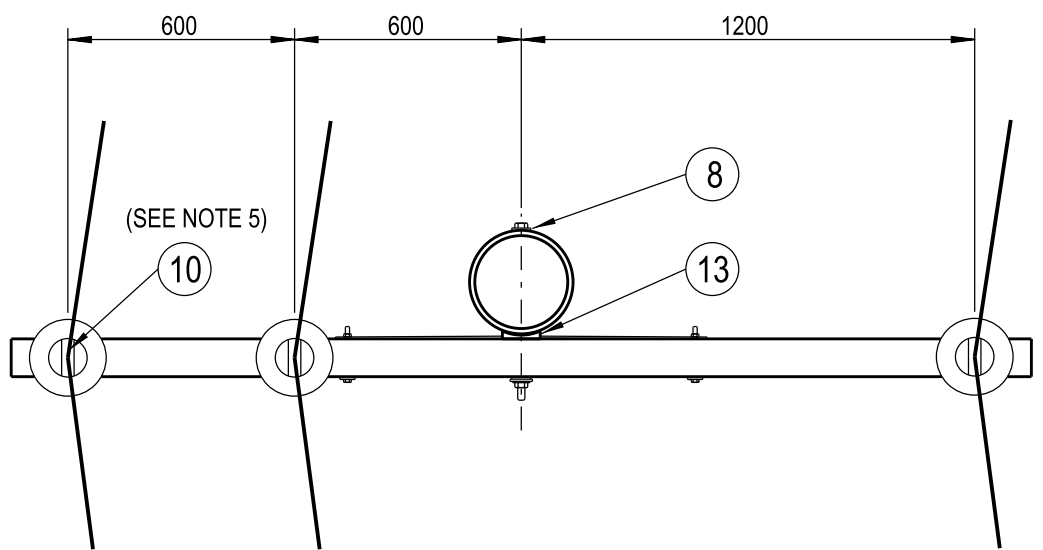
B

C

D

E

F

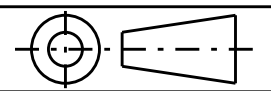


NOTES :

1. THE FOLLOWING INFORMATION IS OBTAINED FROM THE CONSTRUCTION SCHEDULE :
 - a. POLE LENGTH AND STRENGTH.
 - b. SPECIAL FOUNDATION REQUIREMENTS.
 - c. POLE EMBEDMENT DEPTH.
 - d. PHASE CONDUCTOR AND OVERHEAD EARTH WIRE SIZE.
 - e. VARIATIONS TO STANDARD CROSSARM REQUIREMENTS.
 - f. STAY REQUIREMENTS.
 - g. DEVIATION ANGLE.
 - h. ASSESSED EARTHING REQUIREMENTS.
2. ALL BOLTS AND INSULATOR PINS PASSING THROUGH TIMBER ARE TO BE COATED WITH GRAPHITE GREASE.
3. THE MAXIMUM LINE DEVIATION ANGLE TO BE CONSTRUCTED ON THIS ARRANGEMENT IS TO BE DETERMINED BY THE LINE DESIGNER.
4. POLES SHALL BE DRILLED, SCARFED AND DRESSED ON SITE. DRILLING AND SCARFING TO BE TREATED WITH APPROVED PRESERVATIVES.
5. IF THE CONDUCTOR DEVIATES AT THE INSULATOR, USE THE ANGLE TYPE CONDUCTOR TIE ARRANGEMENT, OTHERWISE USE THE INTERMEDIATE TYPE CONDUCTOR TIE ARRANGEMENT AS SHOWN ON DRG : 514038.
6. USE THE 33/920 AERODYNAMIC PIN INSULATOR ARRANGEMENT WHERE THE CONSTRUCTION IS LOCATED WITHIN 1km OF THE COAST OR IN A VERY HIGH POLLUTION AREA.
7. WHEN DESIGNING UNDERBUILT CIRCUITS ON A 33kV STRUCTURE, THE POSSIBLE USE OF LIVE LINE WORKING PROCEDURES MUST BE CONSIDERED WHEN NOMINATING THE CIRCUIT SEPARATION TO ALLOW A MINIMUM CLEARANCE OF 2500mm IF REQUIRED.

13	BLOCK - GAIN, ALUMINIUM, 100mm (S/C 146274)		1
12	WASHER - CONICAL, M12, STAINLESS STEEL	518082	2
11	WASHER - CONICAL, M20, STAINLESS STEEL	518082	1
10	TIE - CONDUCTOR, HIGH VOLTAGE, SUPPORT ARRANGEMENT	514038	4m
9	INSULATOR - 33kV AERODYNAMIC, (33/920) AND PIN ARRANGEMENT	514006	3
	INSULATOR - 33kV AERODYNAMIC, (33/710) AND PIN ARRANGEMENT	513998	3
8	WASHER - SQUARE, 75x75x6mm, GALVANISED (Ø22mm HOLE)	518081	2
7	BOLT & NUT - M20, HEX., GALVANISED (LENGTH TO SUIT POLE)	515466	1
6	SCREW - COACH, M12x100mm, GALVANISED (S/C H40484)		1
5	BRACE - CROSSARM, FLAT, 690mm, GALVANISED	514385	2
4	WASHER - FLAT, M12, GALVANISED	518081	2
3	BOLT & NUT - M12x130mm, HEX., GALVANISED	515466	2
2	CROSSARM - 2700x100x100mm, TYPE B, HARDWOOD OR LAMINATED VENEER	514373	1
1	POLE - TIMBER (AS REQUIRED)	513988	1

ITEM	DESCRIPTION	DRG. No	QTY
------	-------------	---------	-----



ALL DIMENSIONS IN MILLIMETRES UNLESS NOTED OTHERWISE. DO NOT SCALE.

CAD DRAWING DO NOT MANUALLY AMEND AMENDMENTS	DWN: PATRICIA RIOS	APP'D by: GLENN FORD
	CHKD: PHILLIP JONES	
9	DATE: 21/12/2010	APP'D by: GLENN FORD
	SECOND BRACE ADDED. NOTES AMENDED.	
10	DWN: GARY HUGHES	APP'D by: GLENN FORD
	CHKD: GARRY CRAIG	
2	DATE: 17/10/2013	APP'D by: GLENN FORD
	AUSGRID BORDER APPLIED.	



145 NEWCASTLE ROAD
WALLSEND NSW 2287
PHONE: 02 4951 9388
FAX: 02 4951 9389

DESIGNED	-
DRAWN	PETER SAUNDERS
CHECKED	-
AUTHORISED	I.NICHOLLS
DATE	21/06/93
SCALE	1:20
MAP REF.	
LGA	

**STANDARD CONSTRUCTION
33kV HORIZONTAL PIN CONSTRUCTION
4-1**

PROJECT No.	STD	SIZE	DRAWING No	SHEETS	AMD.
PROJTRAK No.	-	A3	513923	01 of 1	10