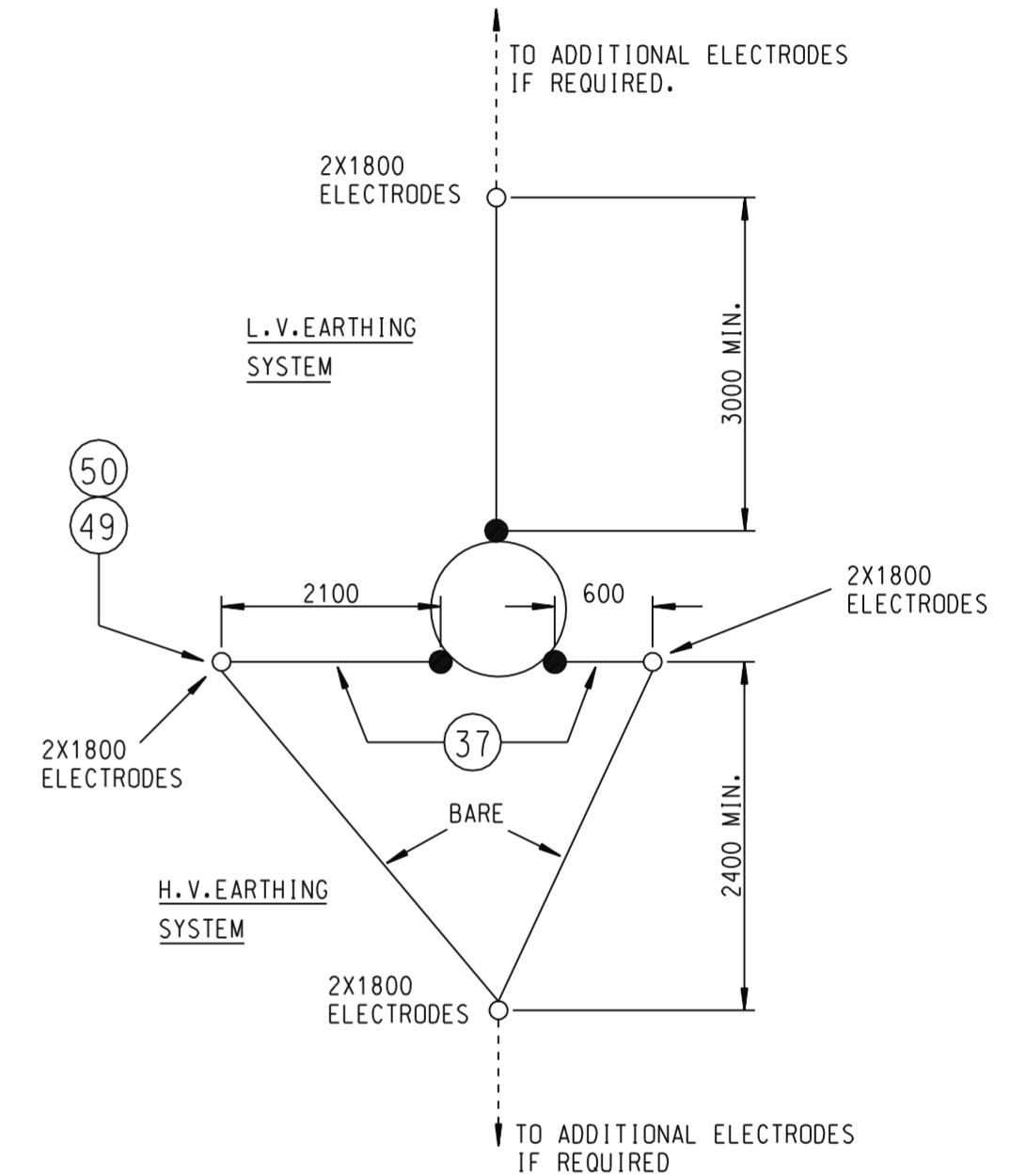
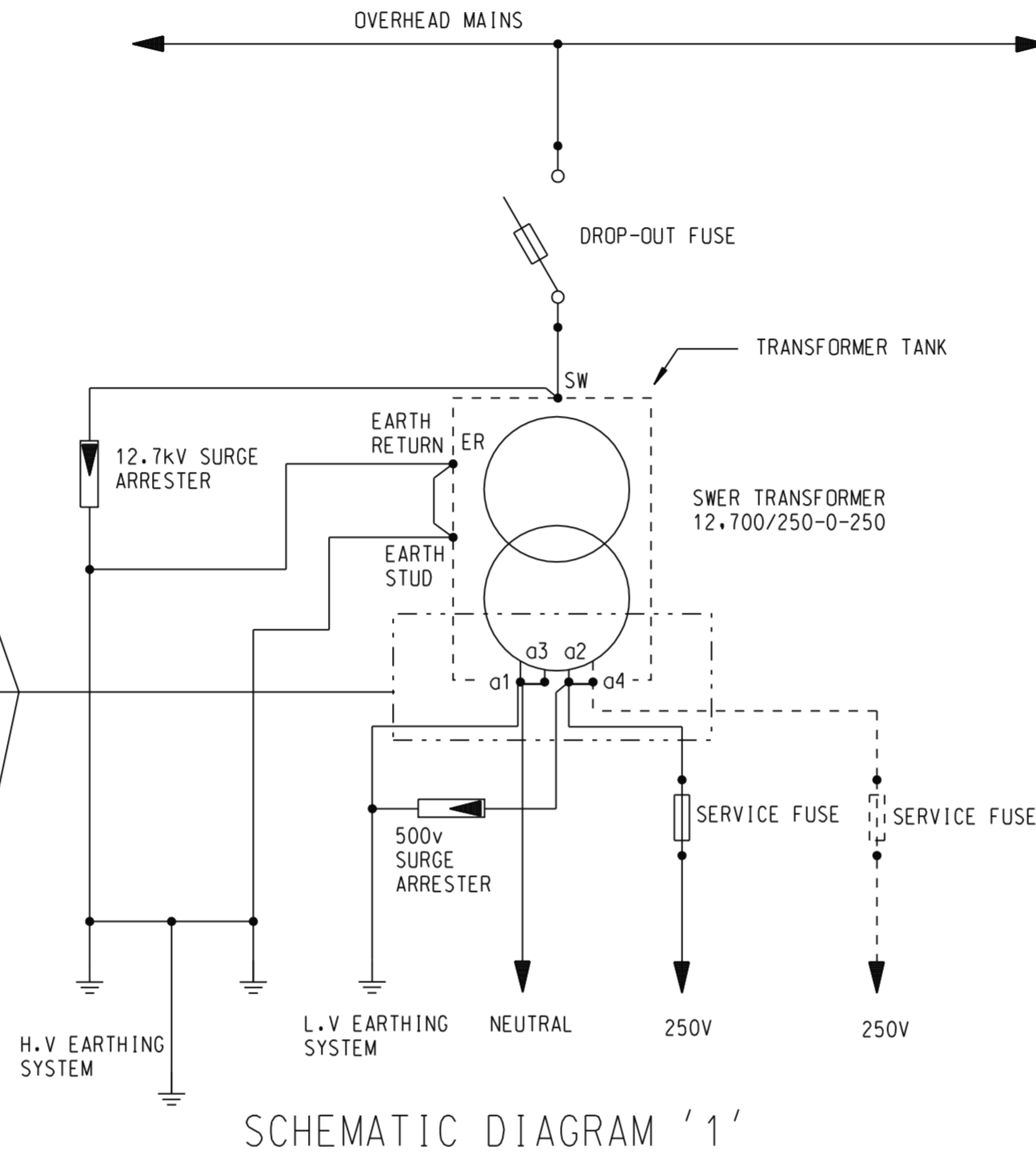
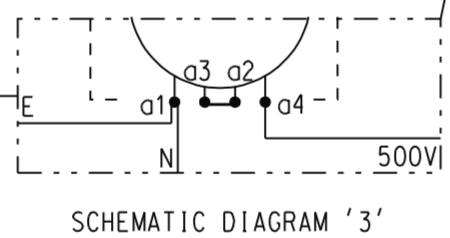
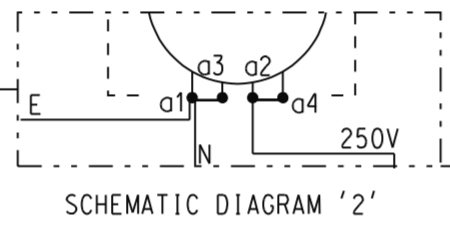


* NOTE:
CURRENT VALUES
SHOWN FOR 25kVA
TRANSFORMER



EARTHING SCHEMATIC
SECTION A-A
SEE SHEET 1

NOTES:

1. ALL EARTHS TO RUN UNBROKEN FROM ELECTRODE TO POLE TOP EQUIPMENT.
2. L.V. EARTHING SYSTEM TO BE CONNECTED TO L.V. NEUTRAL.
3. H.V. EARTHING SYSTEM TO BE CONNECTED TO H.V. EARTH BUSHING, H.V. ARRESTERS & TANK EARTH.
4. H.V. & L.V. EARTH LEADS ABOVE GROUND LINE TO BE SEPARATED BY AT LEAST 50mm.
5. ITEM 9 TO BE CUT IN HALF & DRILLED ON SITE TO DIMENSIONS SHOWN ON PLAN VIEW.
6. ALL DIMENSIONS ARE IN mm U.N.O.

CAD DRAWING
DO NOT MANUALLY AMEND

AMENDMENT NOTES

A. INITIAL ISSUE
DWN: JC CHKED: W.C.
B. DATE:
AUTH'D BY:

ASSOCIATED DRAWINGS

DRAWING AUTHORISED by
DATE: 31/10/95

STANDARD CONSTRUCTION
DISTRIBUTION SUBSTATION TYPE 1PWS7A
1 PHASE SWER 12.7kV
SCHEMATIC DIAGRAMS

R. BREMELL

PROJECT NUMBER

NET STD

SCALE: N.T.S.

DATE: 22/8/95

DRAWN: J. CARLIN

CHECKED:

Energy Australia

ENGINEERING HUNTER

A2 63882

A AMENDMENT
SHEET 2 OF 3