

A

B

C

D

E

F

A

B

C

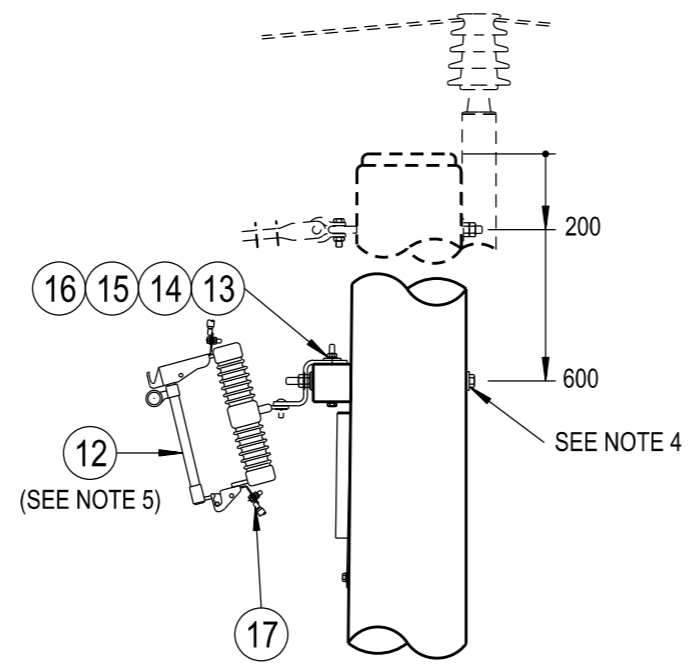
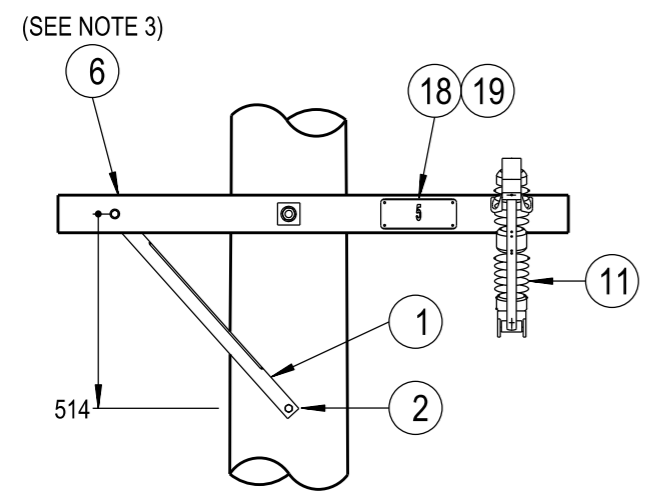
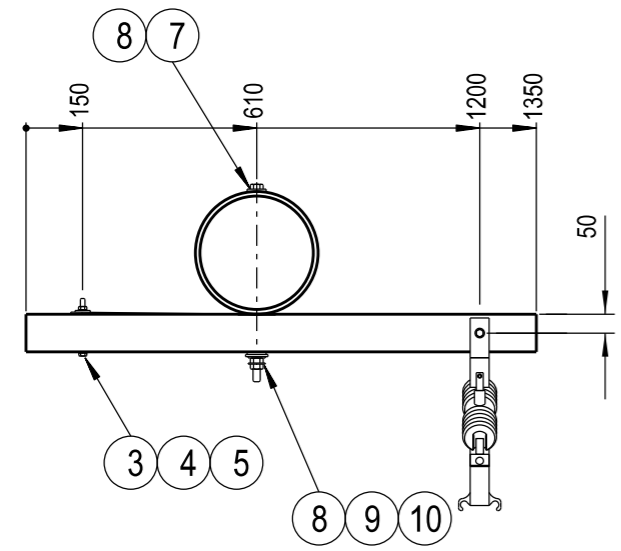
D

E

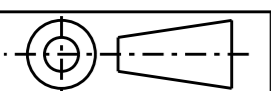
F

NOTES :

1. POLES SHALL BE DRILLED, SCARFED AND DRESSED ON SITE. DRILLING AND SCARFING TO BE TREATED WITH APPROVED PRESERVATIVES.
2. ALL BOLTS PASSING THROUGH TIMBER ARE TO BE COATED WITH GRAPHITE GREASE.
3. CROSSARM SPECIFIED IS TO BE CUT IN HALF AND DRILLED ON SITE TO DIMENSIONS SHOWN.
4. THE DOLF ARM IS TO BE INSTALLED A MINIMUM OF 400mm BELOW THE LOWEST CONDUCTOR ATTACHMENT POINT OR THE M20 ATTACHMENT BOLT ON A POLE TOP BRACKET TO ALLOW FOR READY ACCESS FOR THE CONDUCTOR ATTACHMENTS AND FUSE OPERATION.
5. THE RATING OF THE FUSE ELEMENT IS TO BE SELECTED TO COMPLY WITH THE REQUIREMENTS OF TECHNICAL GUIDE T0024.
6. REFER TO DESIGNER SAFETY REPORT D21/125800 FOR ATYPICAL HAZARDS ASSOCIATED WITH THIS STANDARD CONSTRUCTION.



19	CLOUTS - 30x2.8mm, IRON, GALVANISED		50971	4
18	PLATE - NUMBER, EQUIPMENT IDENTIFICATION	506676		1
17	LUG - COMPRESSION (TO SUIT CONDUCTOR)	514053		2
16	WASHER - CONICAL, M16, GALVANISED	518082	H39647	1
15	WASHER - FLAT, M16, GALVANISED	518081	177984	1
14	WASHER - SQUARE, 50x50x6mm, GALVANISED ((Ø18mm HOLE)	518081	H39257	1
13	BOLT & NUT - M16x140mm, HEX., GALVANISED	515466	H37506	1
12	FUSE - 12kV, LINK, BORIC ACID, S&C SMU-20 (SEE NOTE 5)			1
11	FUSEBASE - DROPOUT, 12kV, 150kV BIL, S&C TYPE SMD-20		H70029	1
10	WASHER - CONICAL, M20, GALVANISED	518082	H39655	2
9	WASHER - FLAT, M20, GALVANISED	518081	177986	1
8	WASHER - SQUARE, 75x75x6mm, GALVANISED ((Ø22mm HOLE)	518081	H39231	2
7	BOLT & NUT - M20, HEX., GALVANISED (LENGTH TO SUIT POLE)	515466		1
6	CROSSARM - 2700x100x100mm, UNDRILLED, HARDWOOD (CUT IN HALF) (SEE NOTE 3)	513989	H23656	1
5	WASHER - CONICAL, M12, GALVANISED	518082	H39639	1
4	WASHER - FLAT, M12, GALVANISED	518081	177982	2
3	BOLT & NUT - M12x130mm, HEX., GALVANISED	515466	46805	1
2	SCREW - COACH, M12x100mm, GALVANISED		H40484	1
1	BRACE - CROSSARM, ANGLE, TYPE H, 740mm, GALVANISED	46	99119	1
ITEM	DESCRIPTION	DRG. No	STOCK CODE	QTY



ALL DIMENSIONS IN MILLIMETRES UNLESS NOTED OTHERWISE. DO NOT SCALE.

CAD DRAWING DO NOT MANUALLY AMEND A M E N D M E N T S	DWN: PATRICIA RIOS	APP'D by: GLENN FORD
	CHKD: PHILLIP JONES	
	DATE: 26/05/2021	
	NOTES & MATERIAL LIST AMENDED.	
	5	

NETWORK STANDARD

145 NEWCASTLE RD WALLSEND, NSW 2287

SCALE	1:20	STANDARD CONSTRUCTION 12.7kV SWER DOLF ARRANGEMENT CONSTRUCTION 2-260			
DESIGNED	-				
DRAWN	P.S				
CHECKED	-				
APPROVED	R.BREMPELL				
DATE	31/05/95				
PROJECT NUMBER	NET STD	SIZE	DRAWING No	SHEET	AMD
PROJTRAK NUMBER	-	A3	520296	01	5