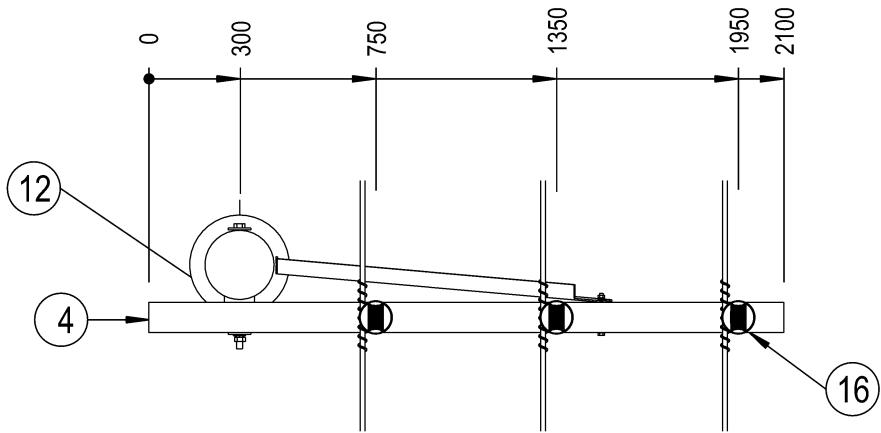


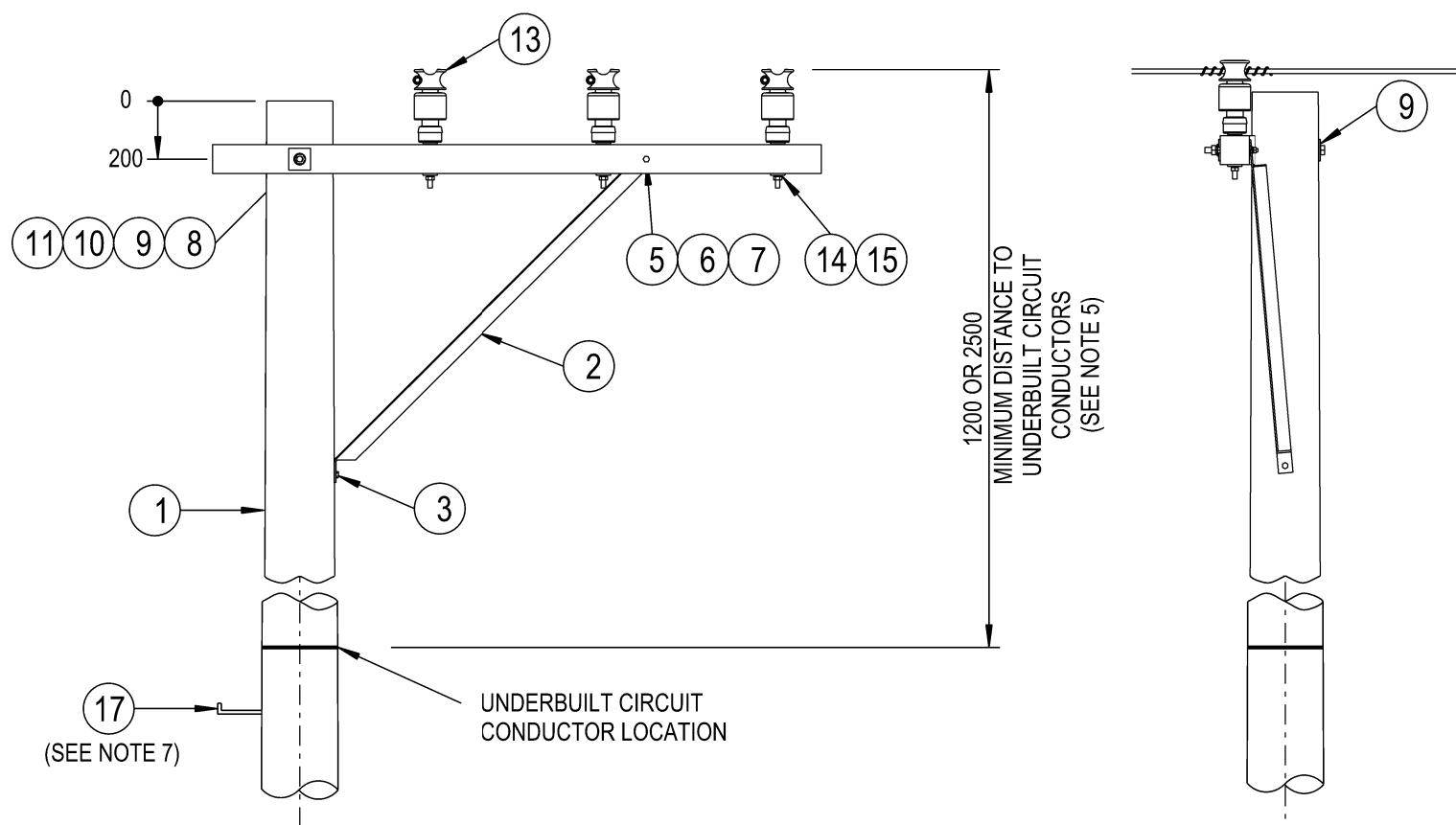
A



NOTES :

1. THE FOLLOWING INFORMATION IS OBTAINED FROM THE PROJECT DESIGN DRAWINGS:
 - a. POLE LENGTH AND STRENGTH.
 - b. SPECIAL FOUNDATION REQUIREMENTS.
 - c. POLE EMBEDMENT DEPTH.
 - d. CONDUCTOR SIZE.
 - e. VARIATIONS TO STANDARD CROSSARM REQUIREMENTS.
 - f. STAY REQUIREMENTS.
 - g. DEVIATION ANGLE.
2. THE MAXIMUM LINE DEVIATION ANGLE TO BE CONSTRUCTED ON THIS ARRANGEMENT IS TO BE DETERMINED BY THE LINE DESIGNER.
3. ALL BOLTS AND INSULATOR PINS PASSING THROUGH TIMBER ARE TO BE COATED WITH GRAPHITE GREASE.
4. POLES SHALL BE DRILLED, SCARFED AND DRESSED ON SITE. DRILLING AND SCARFING TO BE TREATED WITH APPROVED PRESERVATIVES.
5. IN AREAS WHERE THE 11kV NETWORK CANNOT BE WORKED ON USING LIVE LINE TECHNIQUES, UNDERBUILT CIRCUITS SHALL BE INSTALLED WITH A MINIMUM CLEARANCE OF 1200mm. IN AREAS WHERE THE 11kV NETWORK CAN BE WORKED ON USING LIVE LINE TECHNIQUES, UNDERBUILT CIRCUITS SHALL BE INSTALLED WITH A MINIMUM CLEARANCE OF 2500mm.
6. TO MAINTAIN THE INTEGRITY OF A COVERED SYSTEM, IT IS ESSENTIAL THAT ALL STRIPPED AND PUNCTURED INSULATION IS CONTAINED WITHIN THE APPROPRIATE INSULATING COVER.
7. POLE STEPS ARE TO BE INSTALLED IN ACCORDANCE WITH THE REQUIREMENTS OF NS128.
8. REFER TO DESIGNER SAFETY REPORT D22/313087 FOR ATYPICAL HAZARDS ASSOCIATED WITH THIS STANDARD CONSTRUCTION.

B



ITEM	DESCRIPTION	DRG. No	STOCK CODE	QTY
17	STEP - POLE, SCREW-IN (SEE NOTE 7)	250144	185198	A/R
16	WIRE - TIE, PREFORMED, INSULATED, FOR CCT180		176312	3
	WIRE - TIE, PREFORMED, INSULATED, FOR CCT120		144600	
	WIRE - TIE, PREFORMED, INSULATED, FOR CCT80		144618	
15	WASHER - CONICAL, M16, GALVANISED	518082	H39647	3
14	WASHER - SQUARE, 50x50x6mm, GALVANISED (Ø18mm HOLE)	518081	H39257	3
13	INSULATOR - PIN POST, LONG STUD		145052	3
12	BLOCK - GAIN, ALUMINIUM, 100mm		146274	1
11	WASHER - FLAT, M20, GALVANISED	518081	177986	1
10	WASHER - CONICAL, M20, GALVANISED	518082	H39655	1
9	WASHER - SQUARE, 75x75x6mm, GALVANISED (Ø22mm HOLE)	518081	H39231	2
8	BOLT & NUT - M20, HEX., GALVANISED (LENGTH TO SUIT POLE)	515466		1
7	WASHER - CONICAL, M12, GALVANISED	518082	H39639	1
6	WASHER - FLAT, M12, GALVANISED	518081	177982	2
5	BOLT & NUT - M12x130mm, HEX., GALVANISED	515466	46805	1
4	CROSSARM - 2100x100x100mm, TYPE E, HARDWOOD	514374	H23680	1
3	SCREW - COACH, M12 x 100mm, GALVANISED		H40484	1
2	BRACE - CROSSARM, ANGLE, 1524x50x50x6mm, GALVANISED	514382	H17291	1
1	POLE - TIMBER (AS REQUIRED)	513988		1

C

D

E



ALL DIMENSIONS IN MILLIMETRES UNLESS NOTED OTHERWISE. DO NOT SCALE.

F

CAD DRAWING DO NOT MANUALLY AMEND A M E N D M E N T S DWN: P.R. CHKD: P.J. APP'D: G.F. DATE: 03/11/2022 BRACE STRAP POSITION CORRECTED. NOTES & MATERIAL LIST AMENDED. 3	NETWORK STANDARD 145 NEWCASTLE RD WALLSEND, NSW 2287	SCALE	1:25	STANDARD CONSTRUCTION 11kV OFFSET ARM CONSTRUCTION 2-2CCT			
		DESIGNED	PHIL JONES				
		DRAWN	PATRICIA RIOS				
		CHECKED	PHIL JONES				
		APPROVED	STEPHEN CONNOR				
		DATE	05/12/06				
		PROJECT NUMBER	STD				
		PROJTRAK NUMBER	-	SIZE	DRAWING No	SHEET	AMD
				A3	174957	1	3

©