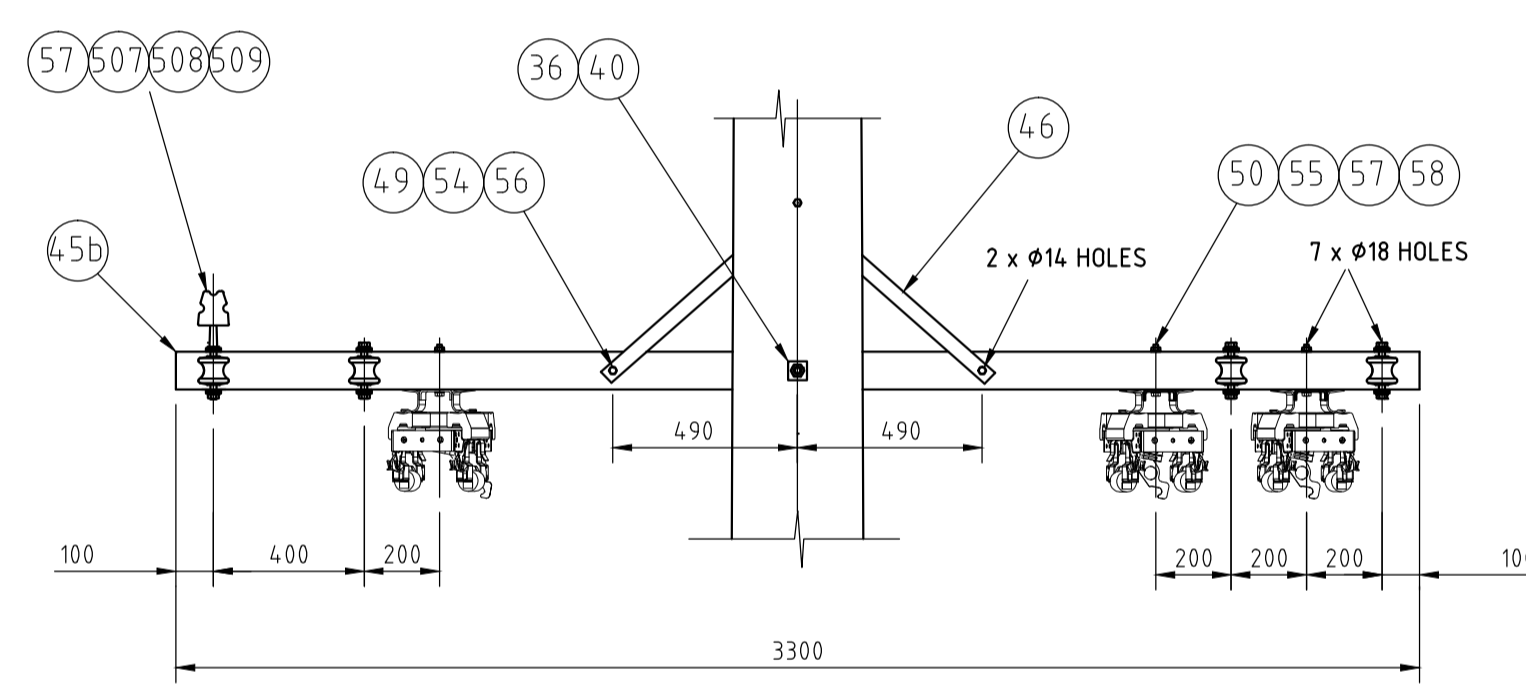
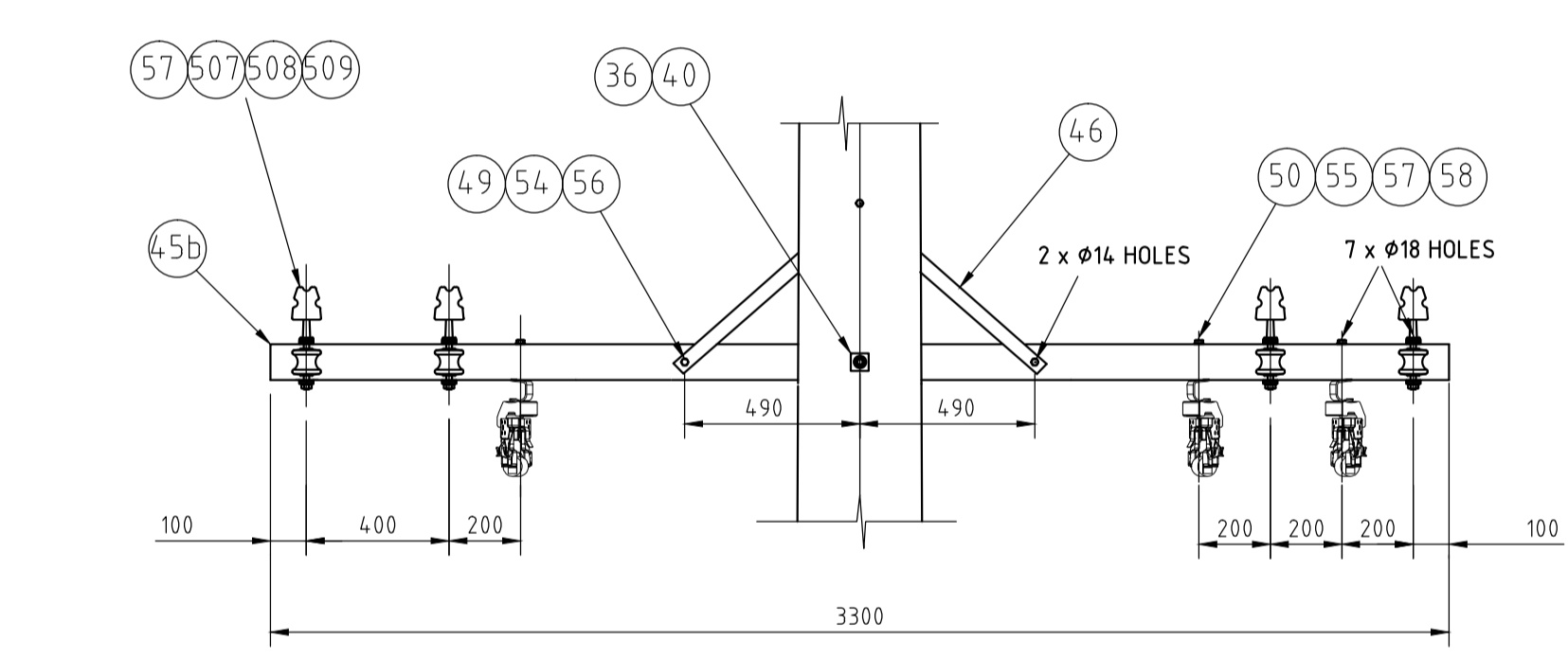


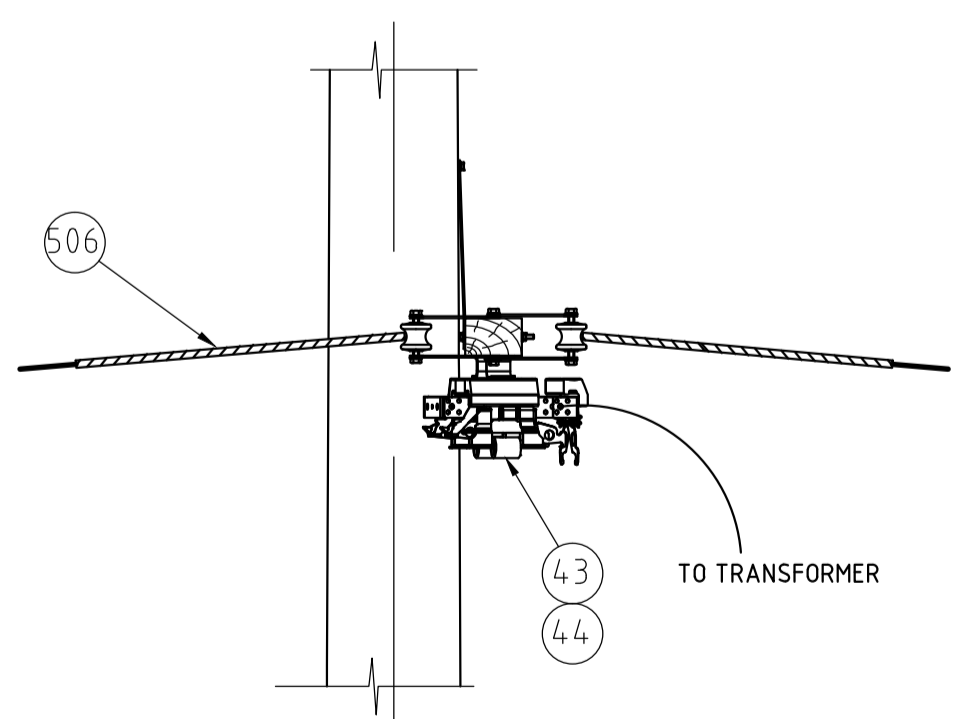
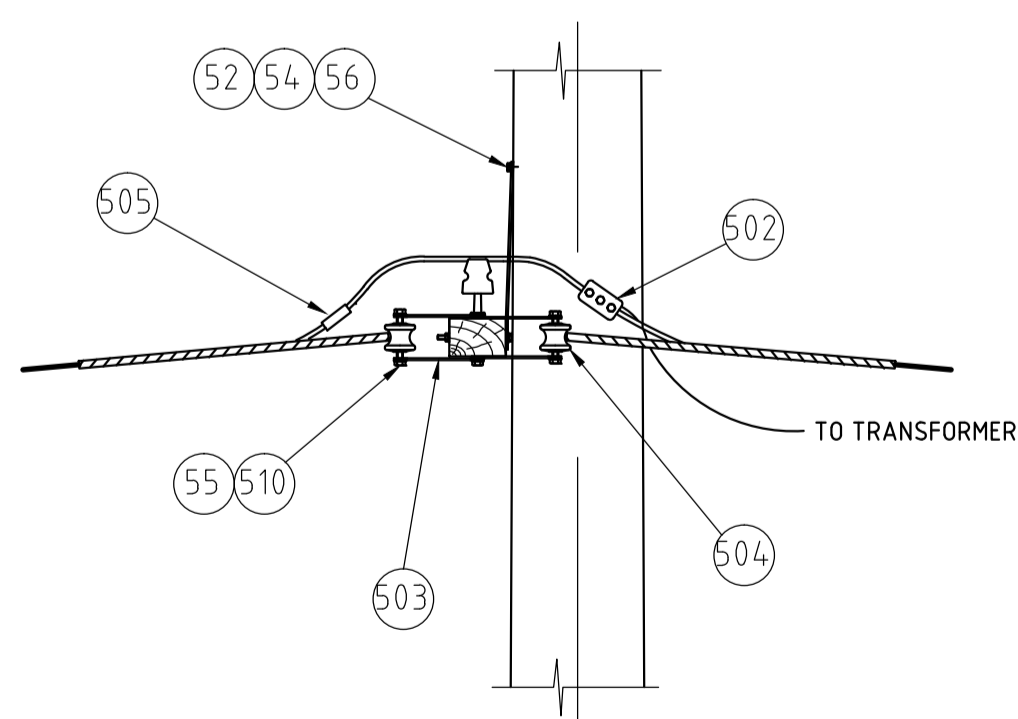
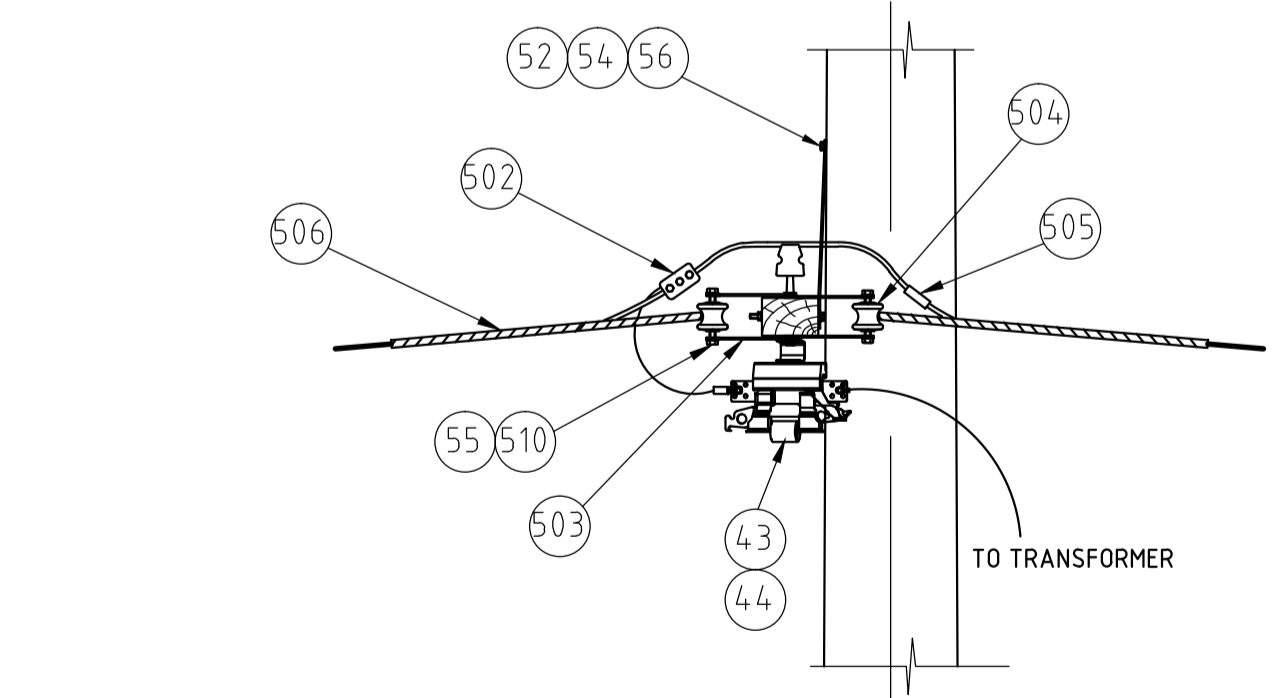
ITEM	DESCRIPTION	DWG. NO.	STOCK CODE	QTY.
502	CLAMP - PARALLEL GROOVE, 3 BOLT		H19269	1 or 4
503	STRAP - SHACKLE, LARGE GALV.		H17762	16
504	REEL INSULATOR - SHACKLE, LARGE GALV.		75812	8
505	JOINT - NON TENSION, COMPRESSION (TO SUIT CONDUCTOR)	514053		1 or 4
506	DEADEND - PREFORMED (TO SUIT CONDUCTOR)	514098		8
507	INSULATOR - TYPE LP LV (PATTERN B)		75663	1 or 4
508	PIN, NUT & WASHER - LV TYPE B/100/35, 165 LONG BOLT	514400	H21549	1 or 4
509	TIE WIRES - TO SUIT CONDUCTOR	514044		1 or 4
510	BOLT & NUT HEX HEAD GALV.M16 X 130mm		46979	8
511	LUG COMPRESSION M12 TO SUIT CONDUCTOR	514053		AS REQ
512	INSULATED CONDUCTOR - TO SUIT EXISTING MAINS	514053		AS REQ
513	INSULATOR, SPREADER, LV CONDUCTOR SPACER 2m LONG		91256	AS REQ

REFER TO DRAWINGS 228821 AND 244219 FOR ITEM NUMBERS NOT SHOWN IN TABLE BELOW



**NOTES**

- LV FUSES ARE TO BE ANGLED 15° TOWARDS THE CENTRE OF THE POLE.
- WHEN STANDING ON POLE FACING REAR OF TRANSFORMER DUAL CIRCUIT LV FUSES TO BE CONNECTED AS FOLLOWS:
  - LH FUSE CONNECTS TO CIRCUIT IN FRONT OF THE TRANSFORMER
  - RH FUSE CONNECTS TO CIRCUIT AT THE REAR OF THE TRANSFORMER.
- SPREADER BARS MUST BE INSTALLED ON THE MID SPAN OF THE LV SPANS EITHER SIDE OF THE SUBSTATION.
- MDI'S ARE TO BE INSTALLED ON ALL SUBSTATIONS EXCEPT FOR SINGLE CUSTOMER INSTALLATIONS AND TRANSFORMERS BELOW 100kVA (UNLESS OTHERWISE SPECIFIED). MDI CT IS SUPPLIED WITH TRANSFORMER b PHASE BUSHING AND IS TO BE CONNECTED TO PRE-WIRED CABLING SUPPLIED WITH MDI UNIT. SECURE CT PRE-WIRED CABLING USING ADDITIONAL CONDUIT, SADDLES AND CABLE TIES AS REQUIRED. CONNECT MDI EARTH CABLE AS DETAILED ON DRAWING 228822 USING CONDUIT, SADDLES AND CABLE TIES AS REQUIRED. REFER TO MDI CONNECTIONS.



**LV OPEN WIRE CONNECTIONS**

REFERENCE DRAWINGS	
TITLE	DRAWING No
3 PHASE POLE TRANSFORMER ON TIMBER POLE GENERAL ARRANGEMENT	228821
3 PHASE POLE TRANSFORMER ON COMPOSITE POLE GENERAL ARRANGEMENT	244219

**CONSTRUCTION**



SCALE	1:20
DESIGNED	D.DAFO/C.MABBUTT
DRAWN	P.JARVIS
CHECKED	D.GRCEV
APPROVED	20/7/13
DATE	
PROJECT NUMBER	PM 02-02010-1-3-1
PROJTRAK NUMBER	

STANDARD CONSTRUCTION 3 PHASE - 11kV POLE MOUNTED DISTRIBUTION SUBSTATION LV OPEN WIRE AND LV CROSSARM CONNECTIONS			
SIZE	DRAWING No	SHEET	AMD
A1	228827	1	1

CAD DRAWING  
DO NOT MANUALLY AMEND  
A M E N D M E N T S  
1. DRAWING RETITLED AND MADE PART OF NETWORK STANDARD DRAWINGS. DRAWING REFERENCE TABLE UPDATED TO SHOW TIMBER POLE AS PER IET 301. NOTES REVISED.  
PN 129027840  
P.JARVIS 15.18  
CHECKED: C.MABBUTT  
APPROVED: D.GRCEV