

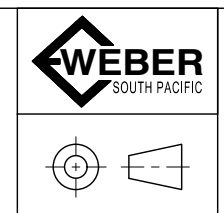
- NOTES**
1. THE LV ASSEMBLY IS DEAD FRONT WITH FLEXIBLE INSULATING BOOTS FITTED TO DISTRIBUTOR TERMINALS. ASSEMBLY IS IP21 FROM THE TOP ONLY. THE COVERS DO NOT PROTECT PURPOSEFUL TOUCH FROM UNDERNEATH.
 2. PHASE IDENTIFICATION
 - 2.1. T (Top) - L1 - RED
 - 2.2. M (Middle) - L2 - WHITE
 - 2.3. B (Bottom) - L3 - BLUE
 3. WIRE COLOURS -
 - RD - RED
 - BL - BLUE
 - WH - WHITE
 - BK - BLACK
 - OR - ORANGE
 - GY - GREY
 - GN/YE - GREEN/YELLOW
 4. FUSE LINKS ARE NOT PROVIDED.
 5. SWITCH UP FOR CONNECTING METER IN SERIES WITH MDI.

AUSGRID : 265240-3

NOT FOR CONSTRUCTION

REV	DATE	DESCRIPTION	DWN	APP
B	03/07/2023	ADDED GPO	P.W	J.J
A	09/03/2023	INITIAL SCHEMATIC	P.W	J.J

PROJECT: AUSGRID CHAMBER - STOCKCODE: 181834
 ASSEMBLY ID: VF223209-AUS07
 DESCRIPTION: 2500A TXF DISCONNECTOR + 2x800A S/F + 1x400A F/S
 RATINGS: 2000A, 415V, 30ka 3s, FORM 1, IP (NOTE 1)
 INSTALLATION TYPE: LV CHAMBER SUBSTATION



WEBER SOUTH PACIFIC
 PO BOX 4264 Eight Mile Plains
 Queensland Australia
 TEL. (07) 3841 6899
 FAX. (07) 3841 6877
 EMAIL- sales@webersouthpacific.com.au

Scale: NTS
 DO NOT SCALE
 Tolerance: N/A
 ALL DIMENSIONS IN MM UNLESS NOTED OTHERWISE

Standard: AS/NZS 61439.2
 Drawing: SCHEMATIC
 SHEET 1 OF 1

Client: AUSGRID
 Part Number: VF223209-AUS07
 Drawing Number: 00015-SC18
 Size: A3
 Type: 2D
 Revision: B