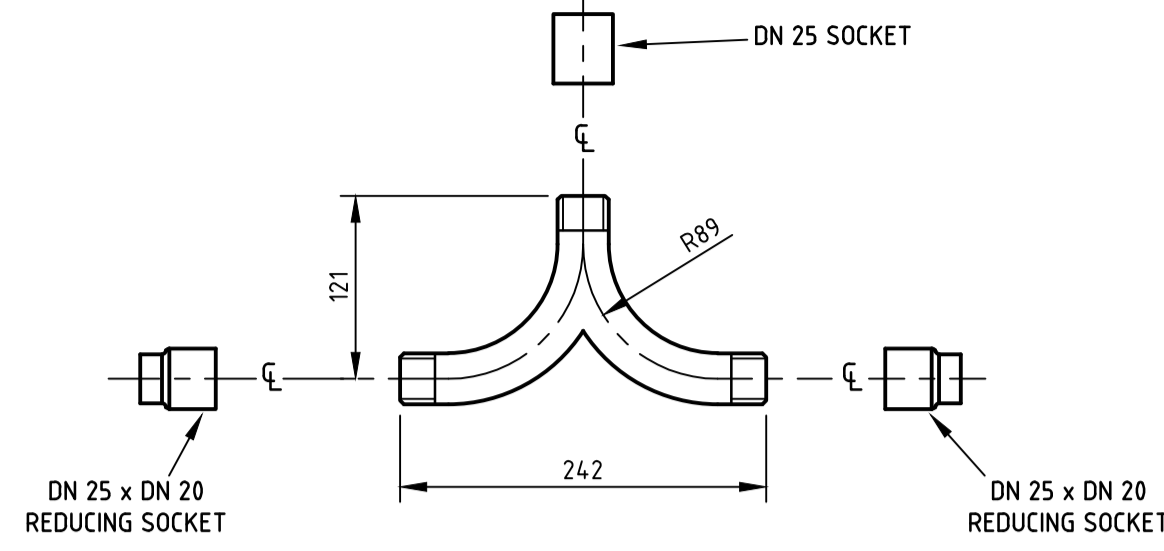
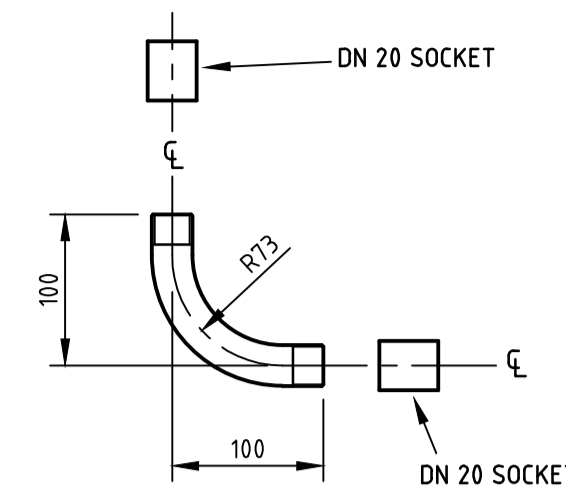


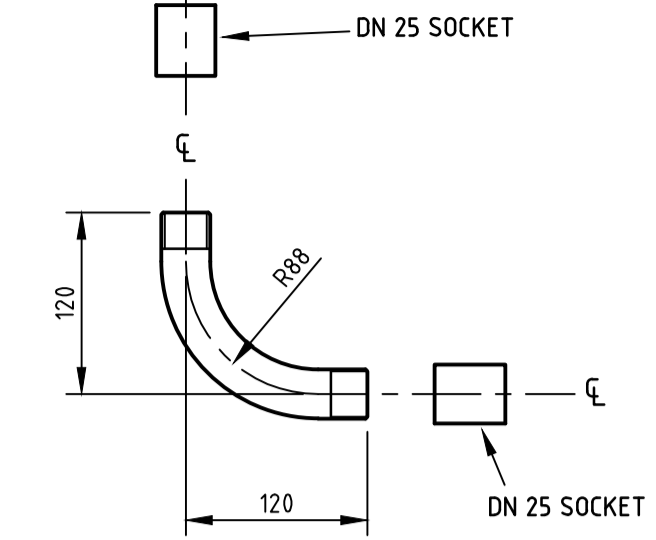
**SWEEP TAKE-OFF DETAIL**  
SCALE 1:5  
MATERIAL - DN25 GALV STEEL PIPE ENDS THREADED 25 BSP



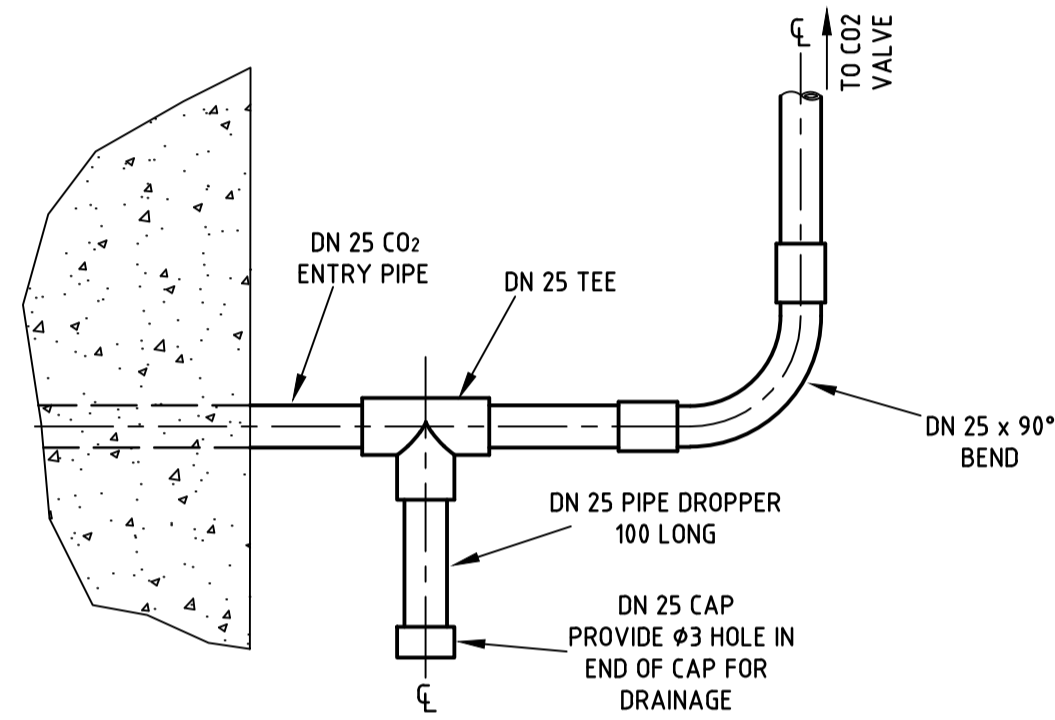
**SWEEP TEE**  
SCALE 1:5  
MATERIAL - DN25 GALV STEEL PIPE ENDS THREADED 25 BSP



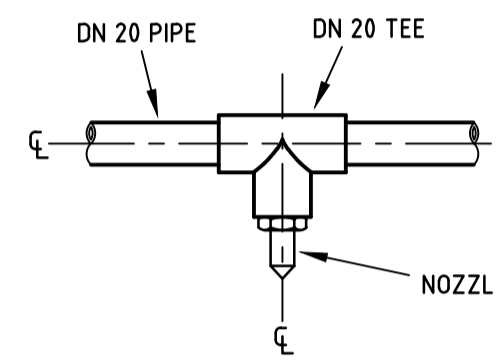
**90° BEND**  
SCALE 1:5  
MATERIAL - DN20 GALV STEEL PIPE ENDS THREADED 20 BSP



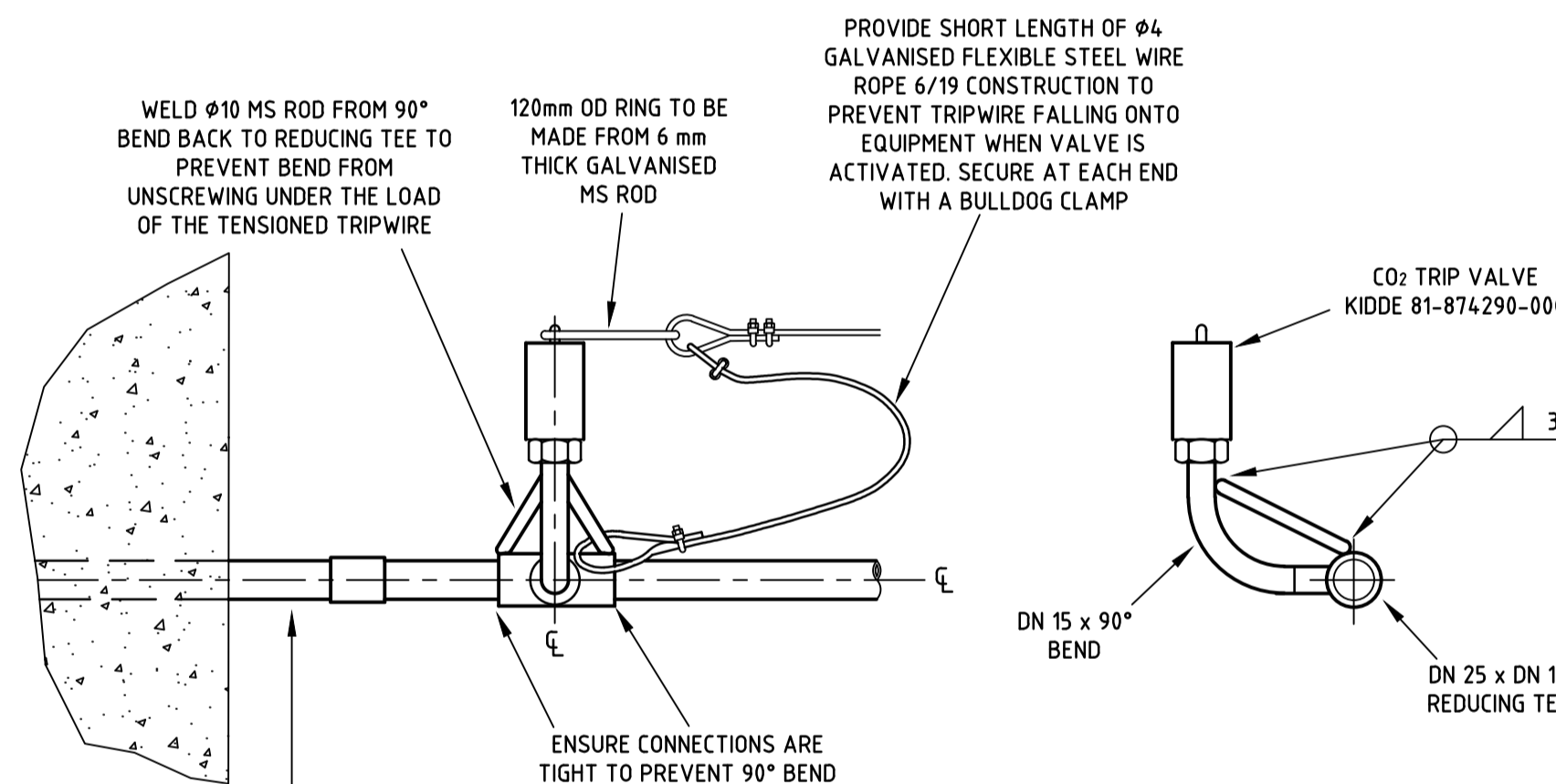
**90° BEND**  
SCALE 1:5  
MATERIAL - DN25 GALV STEEL PIPE ENDS THREADED 25 BSP



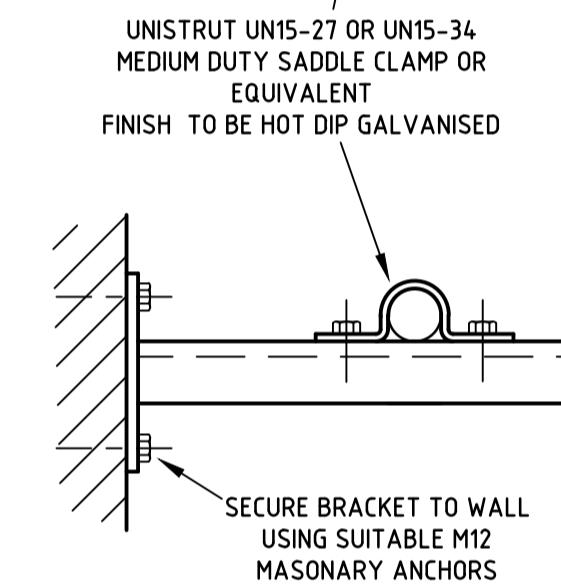
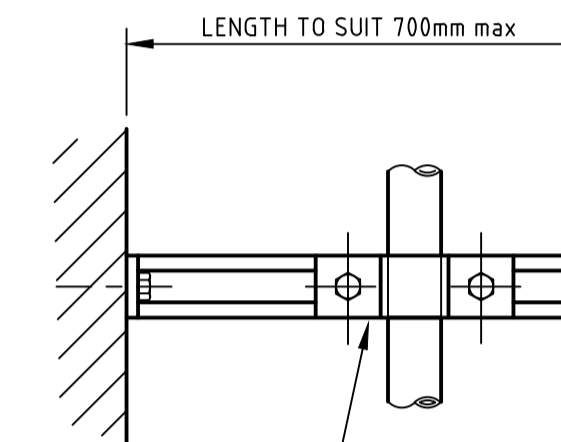
**LOW CO<sub>2</sub> ENTRY DRAIN DETAIL**  
SCALE 1:5  
TO BE USED WHERE CO<sub>2</sub> PIPE ENTRY IS LOWER THAN THE RING MAIN



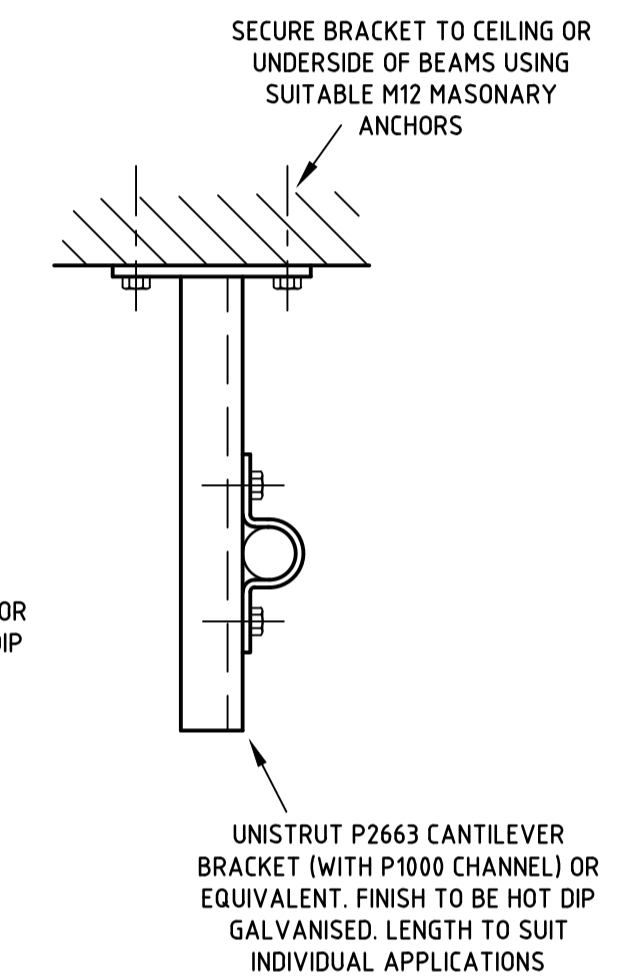
**NOZZLE DETAIL**  
SCALE 1:5  
REFER DRAWING 2064 FOR NOZZLE



**CO<sub>2</sub> VALVE INSTALLATION**  
SCALE 1:5

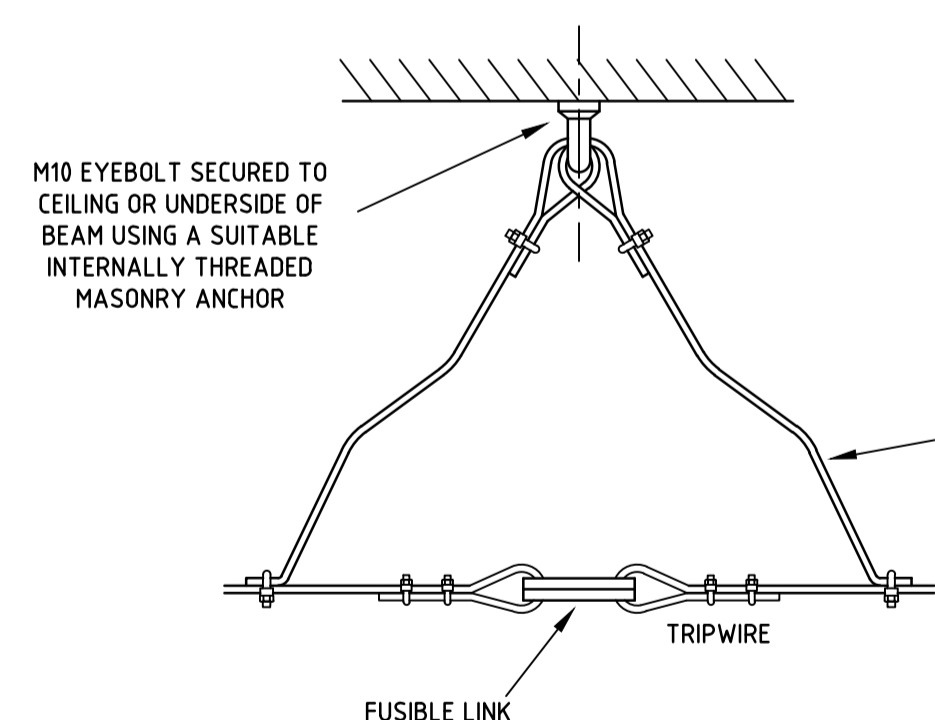


**TYPE A**  
WALL MOUNTED



**TYPE B**  
CEILING MOUNTED

**TYPICAL MOUNTING BRACKETS**  
SCALE 1:5  
OTHER TYPE OF BRACKETS WILL BE CONSIDERED PROVIDING THEY AFFORD THE EQUIVALENT SUPPORT AND RIGIDITY TO THE PIPEWORK



**TRIPWIRE SUPPORT DETAIL**  
SCALE 1:5  
SUPPORT WIRE ARE TO BE LONG ENOUGH TO ENSURE DAMPERS ARE RELEASED UPON ACTIVATION OF THE CO<sub>2</sub> VALVE OR FUSIBLE LINKS AND IS TO BE POSITIONED SO THAT THE TRIPWIRE DOES NOT FALL ONTO EQUIPMENT

**REFERENCE DRAWINGS**  
DISTRIBUTION SUBSTATIONS BASEMENT CHAMBERS  
CO<sub>2</sub> PIPEWORK AND TRIPWIRES TYPICAL ARRANGEMENT - 184970

**NUMBER OF CO<sub>2</sub> BOTTLES & NOZZLES REQUIRED FOR SUBSTATION VOLUME**

SUBSTATION VOLUME	NUMBER OF BOTTLES	NUMBER OF NOZZLES
UP TO 56 m <sup>3</sup>	2	2
57 TO 112 m <sup>3</sup>	4	4
113 TO 168 m <sup>3</sup>	6	6
169 TO 224 m <sup>3</sup>	8	8
225 TO 280 m <sup>3</sup>	10	10
281 TO 336 m <sup>3</sup>	12	12

- NOTES**
- THIS DRAWING IS TO BE READ IN CONJUNCTION WITH NETWORK STANDARD 113.
  - ALL PIPE FITTINGS TO BE 20NB GALV HEAVY AND 25NB GALV HEAVY TO AS1074.
  - MATERIAL AND WORKMANSHIP TO BE IN ACCORDANCE WITH AS4100.
  - WELDING TO BE IN ACCORDANCE WITH AS 1554 PART 1.
  - WALL AND CEILING BRACKETS TO BE HOT DIP GALVANISED.
  - NUTS, BOLTS AND WASHERS ARE TO BE HOT DIP GALVANISED TO AS 1214.
  - WHERE GALVANISING FINISH HAS BEEN REMOVED, THE AREA IS TO BE TREATED WITH COLD GALVANISING PAINT. COATINGS TO BE APPLIED IN ACCORDANCE WITH MANUFACTURER'S INSTRUCTIONS.

**CAD DRAWING**  
DO NOT MANUALLY AMEND  
**AMENDMENTS**

NO.	DATE	BY	REASON
1	22/09/2017	P.JARVIS	NEW DRAWING MADE TO ALIGN WITH NETWORK STANDARDS.
2	22/09/2017	P.TURRIN	CHECKED.
3	22/09/2017	D.GRCEV	APPROVED.
4	08/11/2017	P.JARVIS	CO <sub>2</sub> TRIP VALVE DETAILS ADDED.
5	08/11/2017	P.TURRIN	CHECKED.
6	08/11/2017	D.GRCEV	APPROVED.
7	09/09/2024	M.BENNETT	BORDER & TITLEBLOCK UPDATED.
8	09/09/2024	L.MARTINUZZI	CHECKED.
9	09/09/2024	M.BENNETT	APPROVED.

**Ausgrid**  
24-28 Campbell Street  
SYDNEY NSW 2000

SCALE	AS SHOWN
DESIGNED	-
DRAWN	PH
CHECKED	KM
APPROVED	RM
DATE	07/1993
TRIM REF	-
PROJECT NUMBER	24156

**DISTRIBUTION SUBSTATIONS BASEMENT CHAMBERS CO<sub>2</sub> PIPEWORK, BRACKETS AND TRIPWIRE DETAILS**

DRAWING No	117634	SHEET	1	AMD	8	SIZE	A1
------------	--------	-------	---	-----	---	------	----