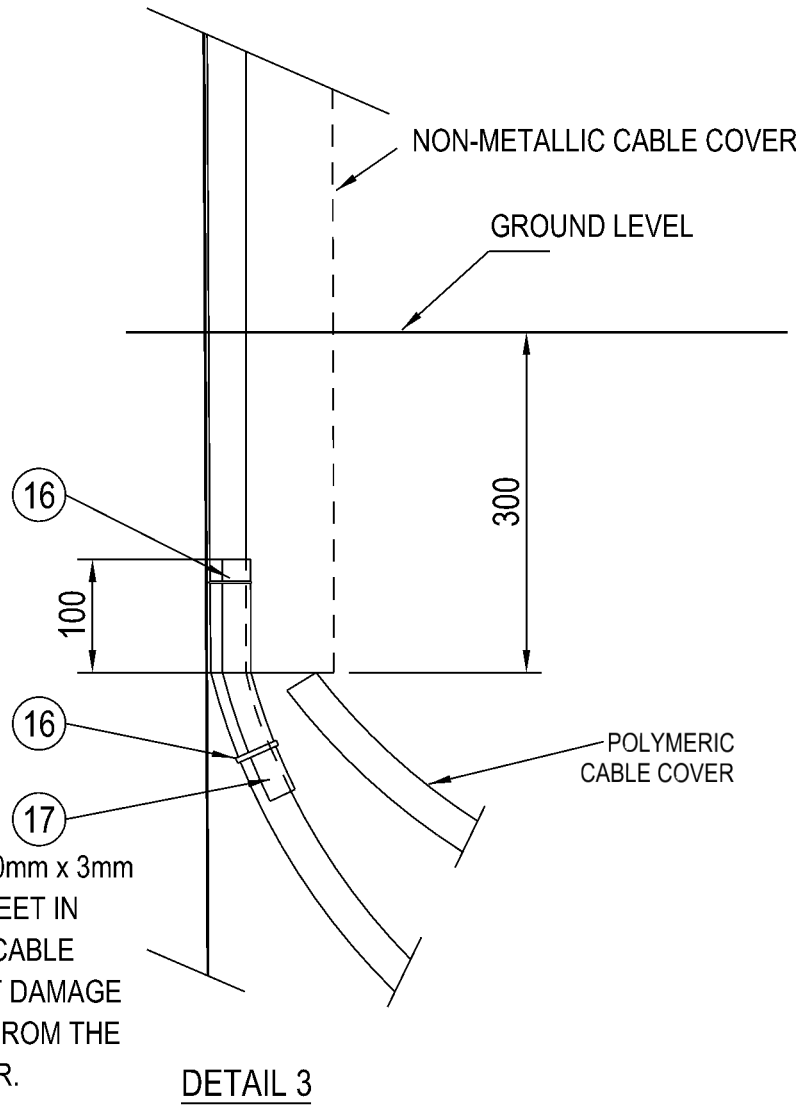
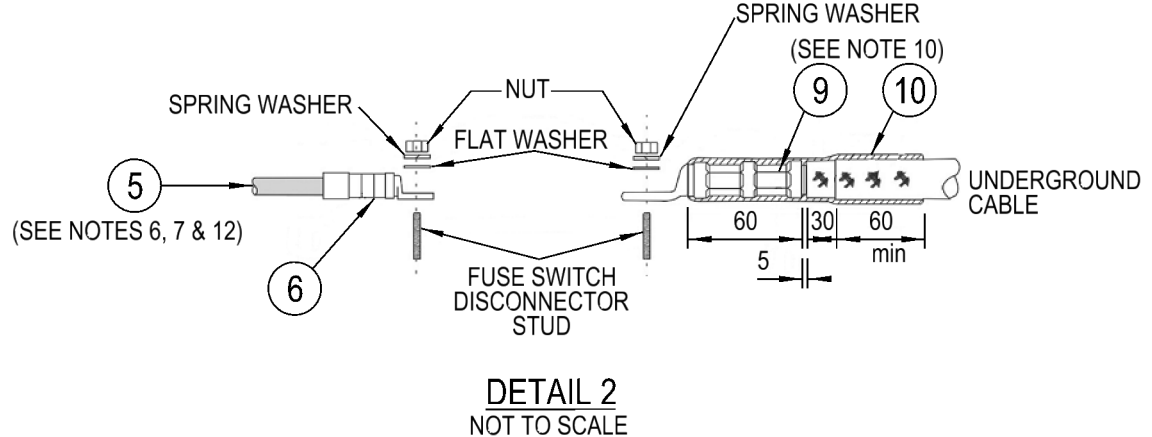
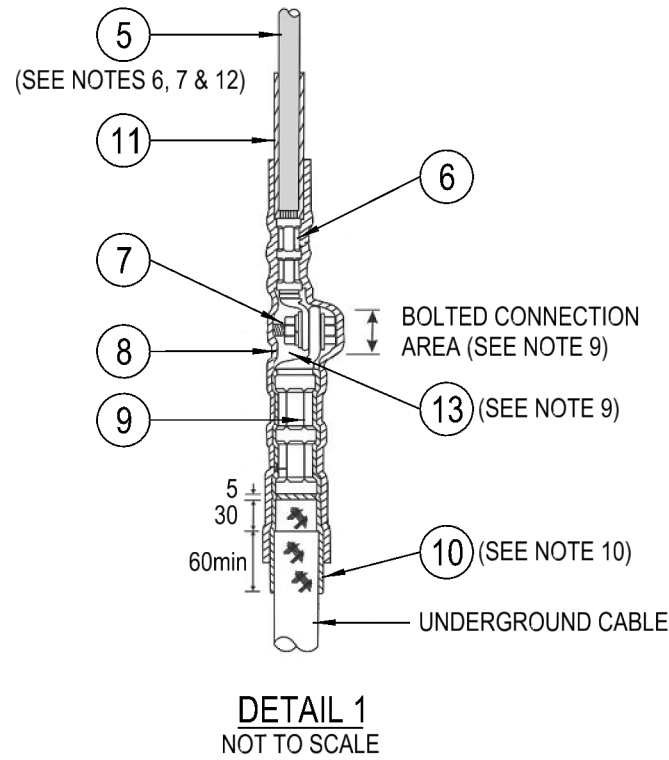


- NOTES:
1. THE LV ABC INTERMEDIATE CONSTRUCTION HAS BEEN SHOWN FOR DIAGRAMATIC PURPOSES ONLY. THIS UGOH CONSTRUCTION CAN BE CONSTRUCTED ON ANY APPROPRIATE LV ABC STANDARD CONSTRUCTION.
 2. THIS UGOH ARRANGEMENT IS NOT DESIGNED FOR A 400A RATING. REFER TO DUAL OVERHEAD LV ABC DESIGN ON DRG: 255638 IF A 400A RATING IS REQUIRED.
 3. THE NON-METALLIC CABLE COVER IS TO BE INSTALLED TO A MINIMUM HEIGHT OF 3000mm ABOVE GROUND LEVEL. THE BASE OF THE CABLE COVER IS ALSO TO BE INSTALLED 300mm BELOW GROUND LEVEL. REFER TO NETWORK STANDARD NS127 FOR ADDITIONAL REQUIREMENTS REGARDING MECHANICAL PROTECTION OF UGOH CONSTRUCTIONS.
 4. THE NON-METALLIC CABLE COVER KIT COMPRISES THE FOLLOWING ITEMS:
 - a. 3 x U-SHAPED TYPE NON-METALLIC COVER PIECES.
 - b. 2 x LARGE GALVANISED SADDLES.
 - c. 4 x SMALL GALVANISED SADDLES.
 - d. 1 x PRE-FIXED STAINLESS STEEL WHIPPER SNIPPER PROTECTION SHIELD.
 5. THE UNDERGROUND CABLE MUST BE CLAMPED AT INTERVALS NOT EXCEEDING 1500mm.
 6. THE LV CABLE BOND CONDUCTOR IS TO BE SELECTED TO MATCH THE OVERHEAD LV ABC CONDUCTOR SIZE.
 7. THE INDIVIDUAL CORES OF THE FOUR CORE LV ABC BONDING CONDUCTOR ARE TO BE SEPARATED PRIOR TO INSTALLATION.
 8. INSULATION PIERCING CONNECTORS SHALL EITHER HAVE A GREASE FILLED CAP FITTED TO SEAL THE LV CABLE BOND CONDUCTOR ENDS OR THE LV CABLE BOND CONDUCTOR ENDS SHALL BE SEALED WITH A UV INHIBITED HEATSHINK CABLE CAP.
 9. THE BOLTED CONNECTION AREA IS TO BE COVERED WITH FIBREGLASS TAPE TO KEEP IT FREE OF ANY ADHESIVES FLOWING FROM THE MASTIC LINED HEATSHRINK SLEEVE.
 10. ABRASE THE PVC CABLE SHEATH TO THE DIMENSIONS SHOWN ON THE CABLE TERMINATION DETAIL.
 11. A MINIMUM DISTANCE OF 150mm IS TO BE MAINTAINED BETWEEN INSULATING PIERCING CONNECTORS.
 12. THE LV CABLE BOND CONDUCTOR IS TO BE INSTALLED WITH A LOOP AS SHOWN TO ALLOW MOISTURE TO DRAIN AWAY FROM THE CABLE CONNECTION TERMINALS.
 13. THE LV ABC FUSE SWITCH DISCONNECTOR KIT WILL COMPRISE THE FOLLOWING COMPONENTS:
 - a. 3 x 400A SINGLE POLE FUSE SWITCHES.
 - b. 3 x 400A CONNECTING LINKS.
 - c. 1 x UNIVERSAL POLE MOUNTING BRACKET.
 14. A UV RESISTANT CABLE TIE SHOULD BE USED TO MECHANICALLY CONNECT THE LV ABC BONDING CONDUCTOR TO THE LV ABC OVERHEAD CONDUCTOR WITHIN 150mm OF THE IPC.
 15. REFER TO DESIGNER SAFETY REPORT D23/19210 FOR ATYPICAL HAZARDS ASSOCIATED WITH THIS STANDARD CONSTRUCTION.



17	SHEET - NITRILE RUBBER, 200x150x3mm	127225	1
16	TIE - CABLE, 382x7.5mm, BLACK, UV STABILISED (SEE NOTE 14)	59907	A/R
15	DISCONNECTOR - KIT, FUSE SWITCH, LV ABC (SEE NOTE 13)	185818	1
14	SCREW - COACH, M16x100mm, GALVANISED	H40662	2
13	TAPE - FIBREGLASS (SEE NOTE 9)	69799	A/R
12	SCREW - COACH, M12x75mm, GALVANISED	50468	A/R
11	SLEEVE - HEATSHRINK, MASTIC LINED (CUT TO 1x150mm LENGTH)	60186	1
10	SLEEVE - HEATSHRINK, MASTIC LINED (CUT TO 4x200mm LENGTHS) (SEE NOTE 10)	60186	1
9	LUG - COMPRESSION, 185mm², TINNED COPPER (M12 HOLE IN PALM)	90183	4
8	SLEEVE - HEATSHRINK, MASTIC LINED (CUT TO 250mm LENGTH)	143776	1
7	BOLT - ASSEMBLY, STAINLESS STEEL (INCLUDES 1 x M12x30mm BOLT, 1 x M12 NUT, 2 x FLAT WASHERS & 1 x SPRING WASHER)	175911	1
6	LUG - COMPRESSION, BI-METALLIC, PRE-INSULATED (FOR 150mm² LVABC)	150441	4
5	CONDUCTOR - 150mm² ABC, LV, 4C, ALUMINIUM, XLPE (SEE NOTES 6, 7 & 12)	148080	A/R
4	CONDUCTOR - 95mm² ABC, LV, 4C, ALUMINIUM, XLPE (SEE NOTES 6, 7 & 12)	67959	4
3	CONNECTOR - INSULATION PIERCING (95-150mm² LVABC/95-150mm² LVABC) (SEE NOTES 8 & 11)	176591	1.5m
2	CONDUIT - FLEXIBLE, 70mm, GREY, PVC	78329	1
1	CLAMP - CABLE, STAINLESS STEEL BAND, ADJUSTABLE (WITH NITRILE RUBBER LINER) (SEE NOTE 5)	177651	A/R
1	COVER - CABLE, KIT, NON-METALLIC (SEE NOTES 3 & 4)	184571	1

ITEM	DESCRIPTION	DRG. No	STOCK CODE	QTY
17	SHEET - NITRILE RUBBER, 200x150x3mm	127225	1	
16	TIE - CABLE, 382x7.5mm, BLACK, UV STABILISED (SEE NOTE 14)	59907	A/R	
15	DISCONNECTOR - KIT, FUSE SWITCH, LV ABC (SEE NOTE 13)	185818	1	
14	SCREW - COACH, M16x100mm, GALVANISED	H40662	2	
13	TAPE - FIBREGLASS (SEE NOTE 9)	69799	A/R	
12	SCREW - COACH, M12x75mm, GALVANISED	50468	A/R	
11	SLEEVE - HEATSHRINK, MASTIC LINED (CUT TO 1x150mm LENGTH)	60186	1	
10	SLEEVE - HEATSHRINK, MASTIC LINED (CUT TO 4x200mm LENGTHS) (SEE NOTE 10)	60186	1	
9	LUG - COMPRESSION, 185mm², TINNED COPPER (M12 HOLE IN PALM)	90183	4	
8	SLEEVE - HEATSHRINK, MASTIC LINED (CUT TO 250mm LENGTH)	143776	1	
7	BOLT - ASSEMBLY, STAINLESS STEEL (INCLUDES 1 x M12x30mm BOLT, 1 x M12 NUT, 2 x FLAT WASHERS & 1 x SPRING WASHER)	175911	1	
6	LUG - COMPRESSION, BI-METALLIC, PRE-INSULATED (FOR 150mm² LVABC)	150441	4	
5	CONDUCTOR - 150mm² ABC, LV, 4C, ALUMINIUM, XLPE (SEE NOTES 6, 7 & 12)	148080	A/R	
4	CONDUCTOR - 95mm² ABC, LV, 4C, ALUMINIUM, XLPE (SEE NOTES 6, 7 & 12)	67959	4	
3	CONNECTOR - INSULATION PIERCING (95-150mm² LVABC/95-150mm² LVABC) (SEE NOTES 8 & 11)	176591	1.5m	
2	CONDUIT - FLEXIBLE, 70mm, GREY, PVC	78329	1	
1	CLAMP - CABLE, STAINLESS STEEL BAND, ADJUSTABLE (WITH NITRILE RUBBER LINER) (SEE NOTE 5)	177651	A/R	
1	COVER - CABLE, KIT, NON-METALLIC (SEE NOTES 3 & 4)	184571	1	



145 NEWCASTLE RD WALLSEND, NSW 2287

SCALE	1:20
DESIGNED	P.JONES
DRAWN	P.RIOS
CHECKED	B.WEBSTER
APPROVED	G.FORD
DATE	16/01/2025
PROJECT NUMBER	STD
PROJ TRAK NUMBER	-

STANDARD CONSTRUCTION	
LV ABC CONDUCTOR UGOH CONSTRUCTION	
FOR 185 CU1 XQ Z CABLE	
WITH FUSE SWITCH DISCONNECTOR	
1-514 (LV1-73)	
SIZE	A1
DRAWING No	255634
SHEET	1
AMD	0